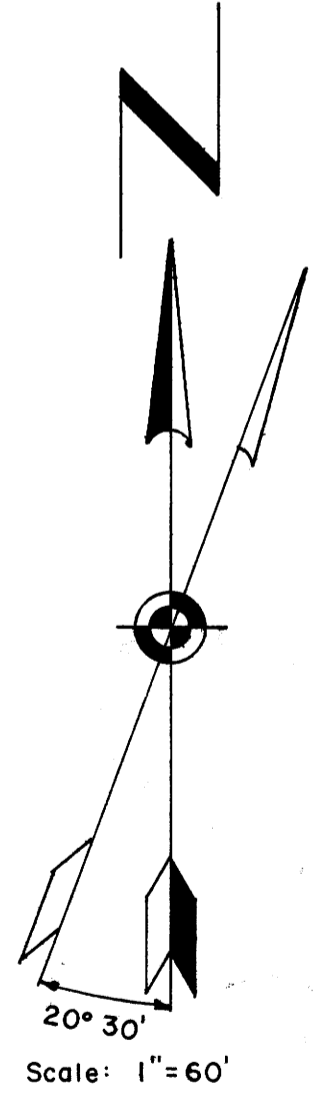
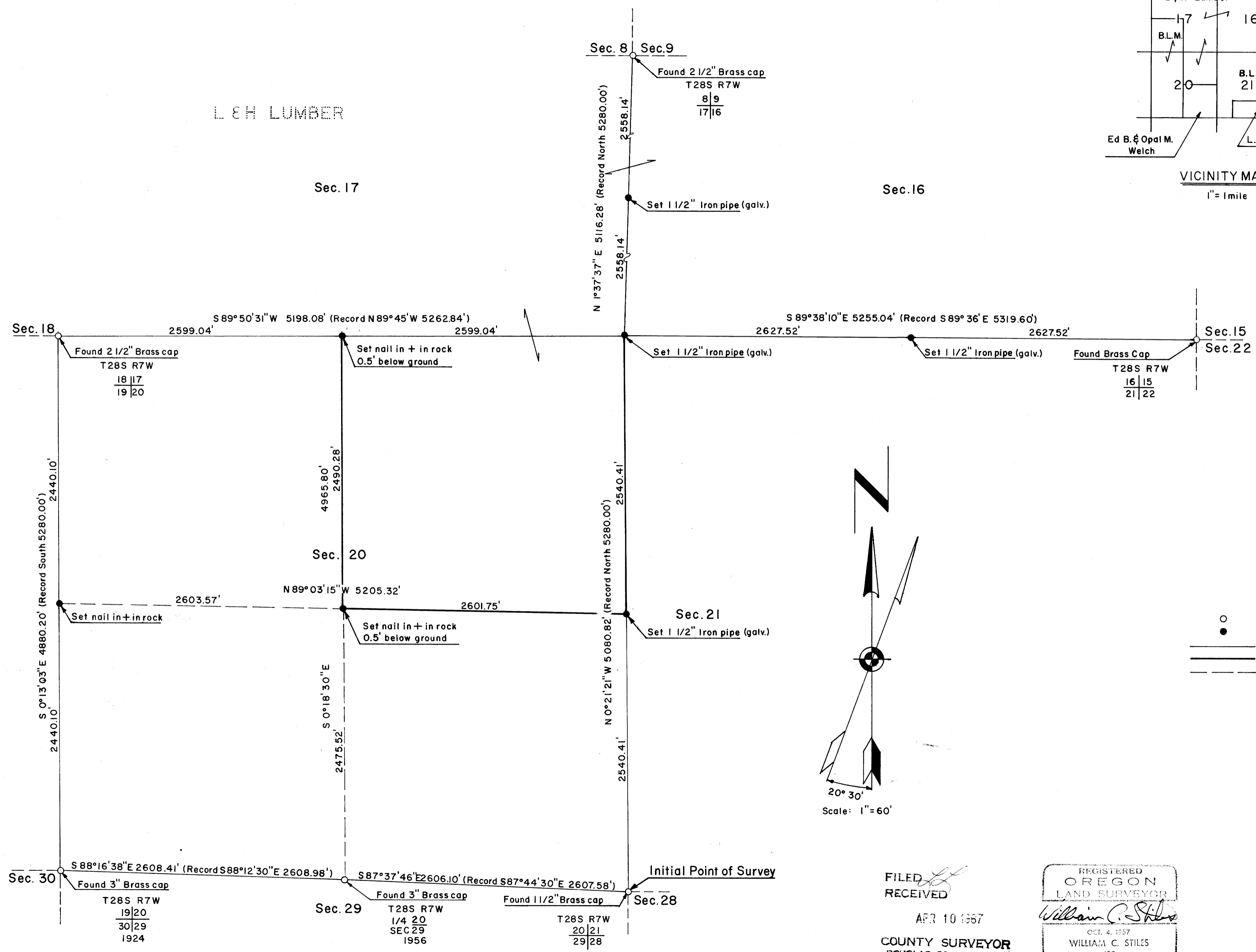
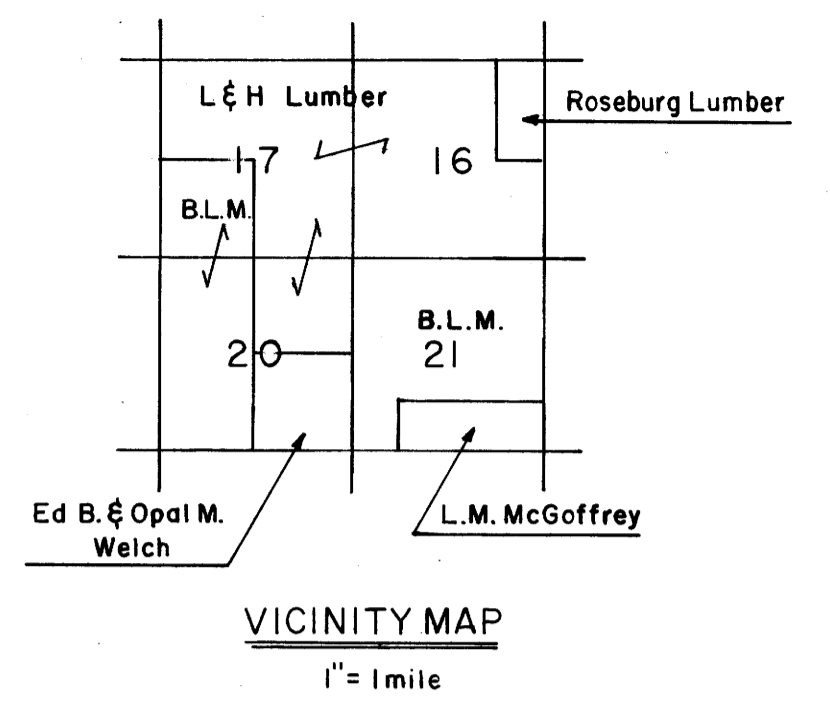


COUNTY SURVEYORS FILE DATA
DO NOT REMOVE FROM FILE



LEGEND

- Denotes corners found
- corners set
- - - random line run
- property line established
- computed line

Bearings based on Solar Observations

FILED
RECEIVED
APR 10 1967
COUNTY SURVEYOR
DOUGLAS COUNTY, ORE.

REGISTERED
OREGON
LAND SURVEYOR
William C. Stiles
OCT. 4, 1957
WILLIAM C. STILES
432

FILED
RECEIVED

JAN 6 1972

COUNTY SURVEYOR
DOUGLAS COUNTY, ORE.

CORRECTED NOTES

SUBDIVISION OF SECTION 20, T28S, R7W, W.M.
For L & H Lumber Company, Sutherlin, Oregon
By SEEK, INC., 715 S.E. Cass Street, Roseburg, Oregon

Beginning at the corner to Sections 20, 21, 28, and 29 which was found as described in the County Surveyor's Book of Restored Corners then proceeding North on a due bearing.

At 2640 feet, search was made for the 1/4 corner between Sections 20 and 21. As no evidence of this corner was found the traverse was continued due North. At 5280 feet, search was made for the corner to Sections 16, 17, 20, and 21. As no evidence of this corner was found, the traverse was continued due North. At 7920 feet a search was made for the 1/4 corner between Sections 16 and 17. As no evidence of this corner was found, the traverse was continued northerly to the corner to Sections 8, 9, 16, and 17 which was found as described in the County Surveyor's Book of Restored Corners.

After proceeding to the corner to Sections 17, 18, 19, and 20, which was found as described in the County Surveyor's Book of Restored Corners, a traverse was run due East. At 2640 feet search was made for the 1/4 corner between Sections 17 and 20. As no evidence of this corner was found the traverse was continued due East. At 7920 feet the 1/4 corner between Sections 16 and 17 was searched for and not found. The traverse was continued easterly to the corner to Sections 15, 16, 21, and 22 which was found as described in the County Surveyor's Book of Restored Corners .

The corner to Sections 16, 17, 20, and 21 was then established by double proportionate measurement. At the point for the corner a 1-1/2-inch galvanized iron pipe was set from which a 12-inch oak scribed

G. B. Ellis No. 55/32 A

S 16 BT bears N 33° 08' 59" E, 9.5 ft; a 12-inch oak scribed S 17 BT bears N 77° 36' 41" W, 31.7 feet, an X chiseled in a rock face bears S 31° 44' 29" W, 43.8 feet, an X chiseled in a rock face bears S 47° 37' 01" E, 33.34 feet. This corner bears N 89° 50' 31" E, 5198.08 feet from the corner to Sections 17, 18, 19, and 20; N 89° 38' 10" W, 5255.04 feet from the corner to Sections 15, 16, 21, and 22; S 1° 37' 37" W, 5116.28 feet from the corner to Sections 8, 9, 16, and 17; N 0° 21' 21" W, 5080.82 feet from the corner to Sections 20, 21, 28, and 29.

Then the 1/4 corner between Sections 16 and 21 was established by single proportionate measurement S 89° 33' 10" E, 2627.52 feet from the corner to Sections 16, 17, 20, and 21. At the point for the corner a 1-1/2-inch galvanized iron pipe was set from which a 12-inch Douglas fir bears N 29° 21' 09" W, 13.0 feet scribed 1/4 S 16 BT; and a 14-inch Douglas fir bears S 34° 16' 51" W, 13.5 feet scribed 1/4 S 21 BT. Then the 1/4 corner between Sections 16 and 17 was established by single proportionate measurement N 1° 37' 37" E, 2558.14 feet from the corner to Sections 16, 17, 20, and 21. At the point for the corner a 1-1/2-inch galvanized iron pipe was set from which a 24-inch oak bears N 88° 28' 03" E, 33.8 feet, scribed 1/4 S 16 BT and a 16-inch oak bears S 51° 00' 45" W, 40.0 feet, scribed 1/4 S 17 BT. Then the 1/4 corner between Sections 17 # 187 and 20 was established by single proportionate measurement S 89° 50' 31" W, 2599.04 feet, from the corner to Sections 16, 17, 20, and 21. At the point for the corner a nail was set in an X chiseled in a rock face 0.5' below ground level from which a nail in a rock face bears N 39° 37' 26" E, 16.20 feet and a chiseled X in a large stone bears S 38° 28' 26" W, 36.60 feet.

After proceeding to the corner of Sections 20, 21, 29, and 28 the traverse is continued N 87° 37' 46" W, 2606.10 feet to the 1/4 corner

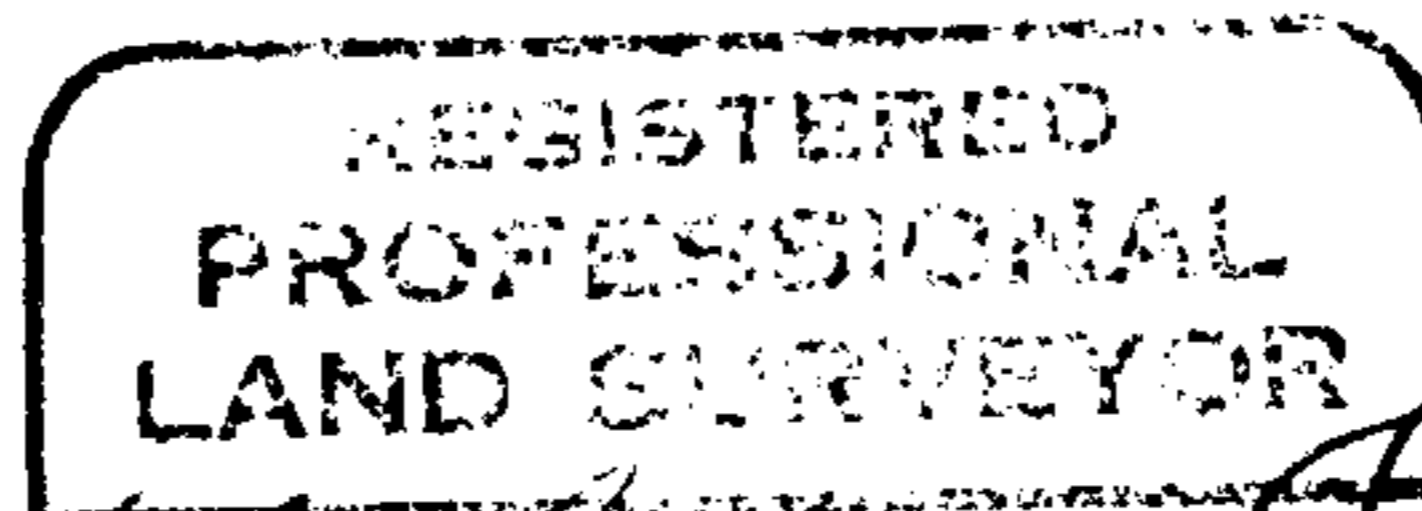
between Sections 20 and 29 which was found as described in the County Surveyor's Book of Restored Corners. Then the traverse was continued N 88° 16' 38" W, 2608.41 feet to the corner to Sections 19, 20, 29, and 30 which was found as described in the County Surveyor's Book of Restored Corners. Then the traverse was continued North. At 2640 feet the 1/4 corner between Sections 19 and 20 was searched for but not found. Then the traverse was continued North to the corner to Sections 17, 18, 19, and 20. The 1/4 corner between Sections 19 and 20 was then established at proportionate distance of 2440.10, S 0° 13' 03" E of the corner to Sections 17, 18, 19, and 20. At the point for the corner a nail was set and an X chiseled in a rock face from which an 18-inch cedar scribed 1/4 S 19 BT bears S 77° 04' 02" W, 75.5 feet, a 14-inch cedar scribed 1/4 S 20 BT bears N 84° 23' 42" E, 83.3 feet.

After proceeding to the 1/4 corner between Sections 20 and 21, the traverse is continued N 89° 03' 15" W, 2601.75 feet to a point which is established as being the interior 1/4 corner of Section 20 as the point is midway between the North and South 1/4 corners and the East and West 1/4 corners. At the point for the corner a nail was driven in and an X chiseled in a rock face 0.5' below ground level from which a 12-inch cedar scribed C 1/4 S 20 BT bears N 49° 06' 03" E, 74.98 feet; a 12-inch oak scribed C 1/4 S 20 BT bears S 39° 47' 17" E, 76.59 feet; a 6-inch oak scribed C 1/4 S 20 BT bears S 28° 48' 38" W, 8.95 feet; an X chiseled in a rock face bears N 56° 44' 47" W. All bearings were established through solar observation.

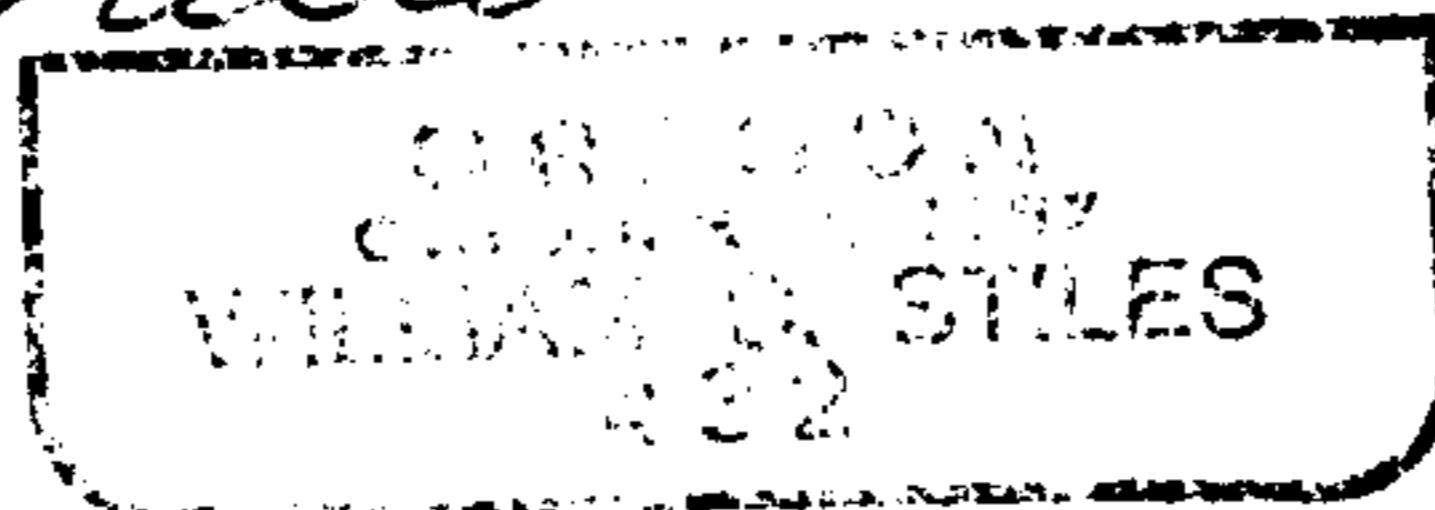
FILED
RECEIVED

JAN 7 1972.

COUNTY SURVEYOR
DOUGLAS COUNTY, ORE.



William C. Stiles



C.S. File No. 55/32c