

COUNTY SURVEYORS FILE DATA
IS NOT REMOVE FROM OFFICE

RESTORATION OF PROPERT4 CORNERS
IN LOTS 1, 2, 3, 15, & 16 BLK. 4, PLAT-1, SUTHERLIN LAND & WATER CO.
SURVEYED FOR IVAN HOLM
SURVEYED BY BAUGHMAN SURVEYING SERVICE
SCALE 1"=200' MARCH 29, 1967

- SET 5/8" IRON ROD
- o AS NOTED

REGISTERED
OREGON
LAND SURVEYOR

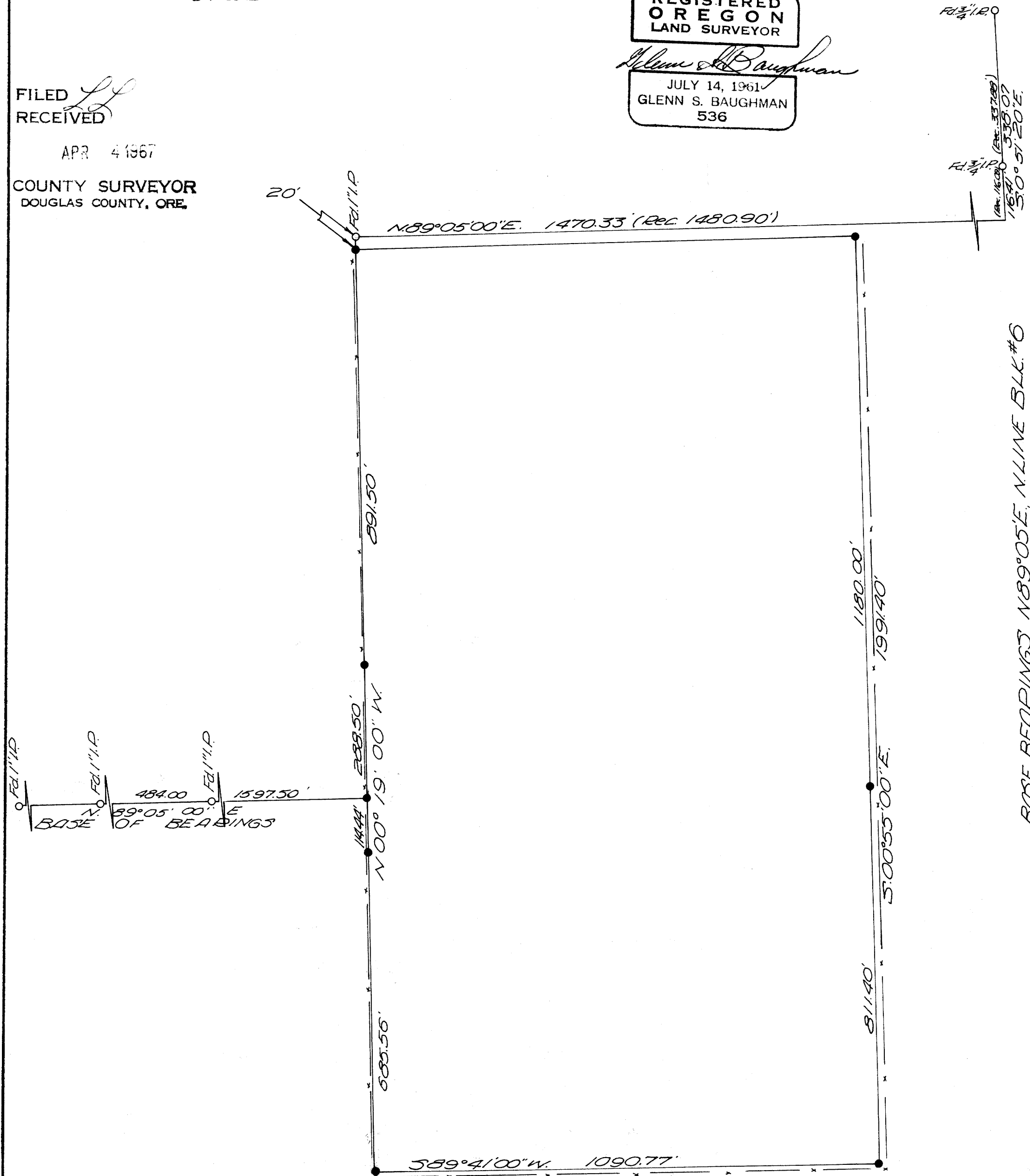
Glenn S. Baughman

JULY 14, 1961
GLENN S. BAUGHMAN
536

FILED
RECEIVED

APR 4 1967

COUNTY SURVEYOR
DOUGLAS COUNTY, ORE.



BASE BEARINGS N 89° 05' E, N LINE BLK. # 6