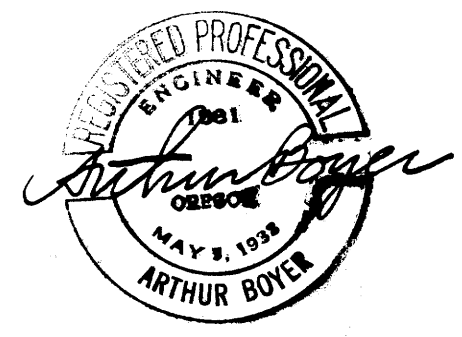
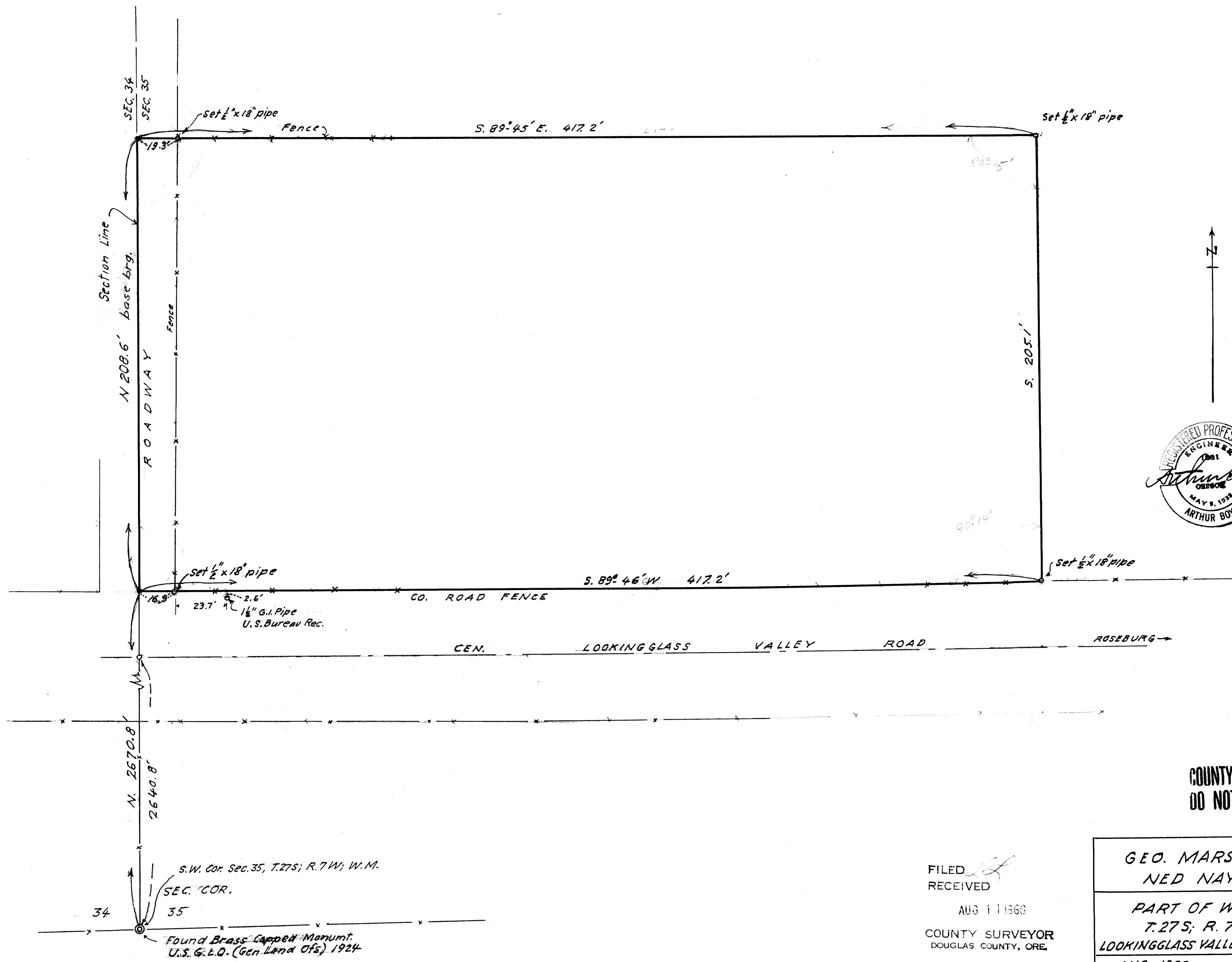


9.82  
1330'



COUNTY SURVEYORS FILE DATA  
DO NOT REMOVE FROM OFFICE

FILED  
RECEIVED  
AUG 11 1966  
COUNTY SURVEYOR  
DOUGLAS COUNTY, ORE.

GEO. MARSH AND W.F. TO  
NED NAY AND W.F.  
PART OF W $\frac{1}{2}$  SW $\frac{1}{4}$  NW $\frac{1}{4}$  SEC. 35,  
T.27S; R.7W; WIL. MER,  
LOOKINGGLASS VALLEY, DOUGLAS COUNTY, ORE  
AUG 1966 1"=30ft.

MAP FILE M.327-1

MAP FILE M.327-1