

COUNTY SURVEYORS FILE DATA
DO NOT REMOVE FROM OFFICE

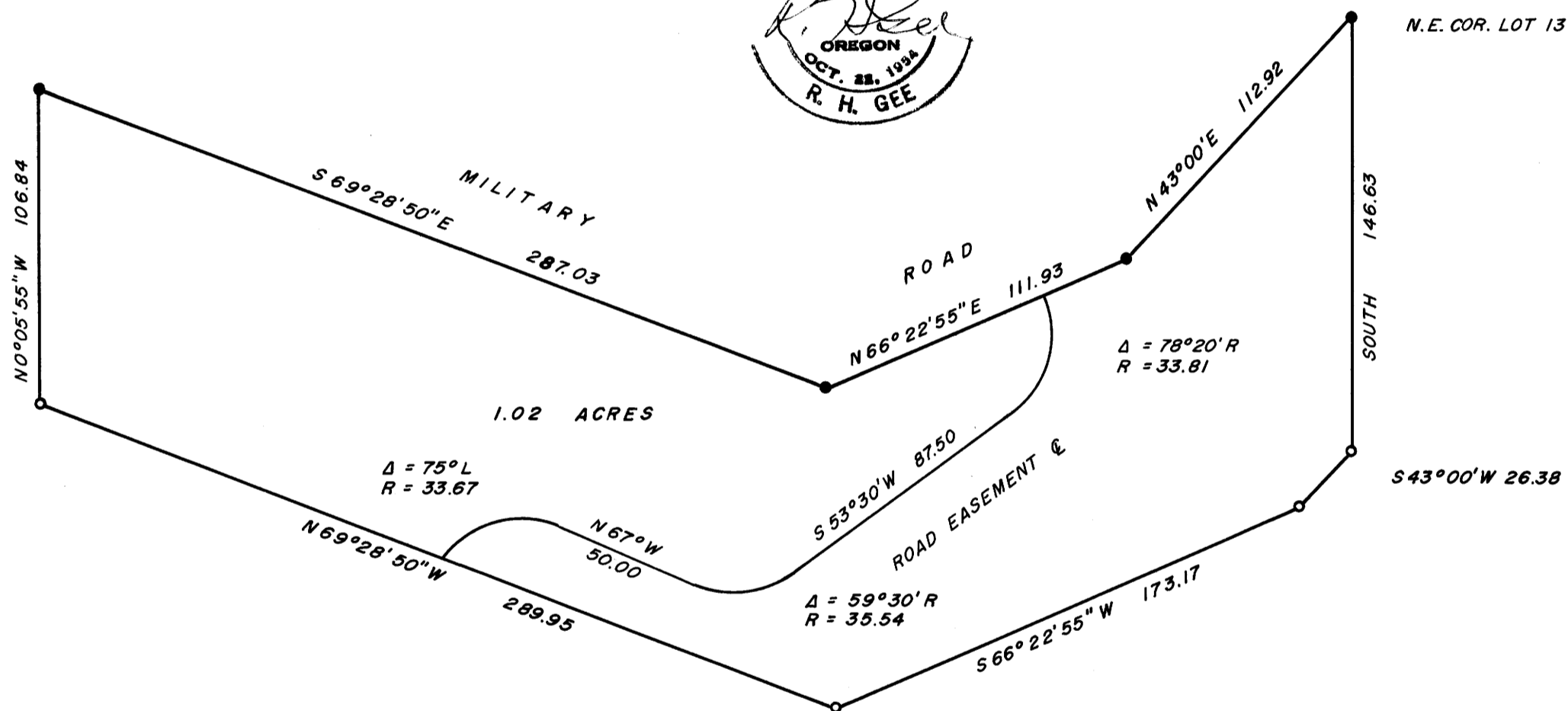
SURVEY OF PORTION OF LOT 13
PLAT E, UMPQUA PARK FRUIT LANDS
SURVEYED FOR STEVENSON REALTY
SURVEYED BY R. H. GEE
FEBRUARY, 1967 - SCALE 1" = 50'

NOTE: THIS MAP SUPPLEMENTS C.S. MAP FILE M 32 - 64



BEARINGS BASED ON
C.S. MAP FILE M 20-78

N.W. COR. LOT 13



- DENOTES IRON ROD WITH STEEL CAP FOUND
- DENOTES 5/8" IRON ROD SET

FILED
RECEIVED

MAR 29 1967

COUNTY SURVEYOR
DOUGLAS COUNTY, ORE.

MAP FILE M.32.7-69

M 32-69