

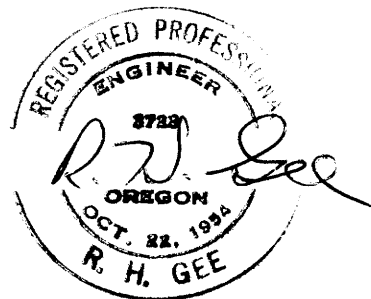
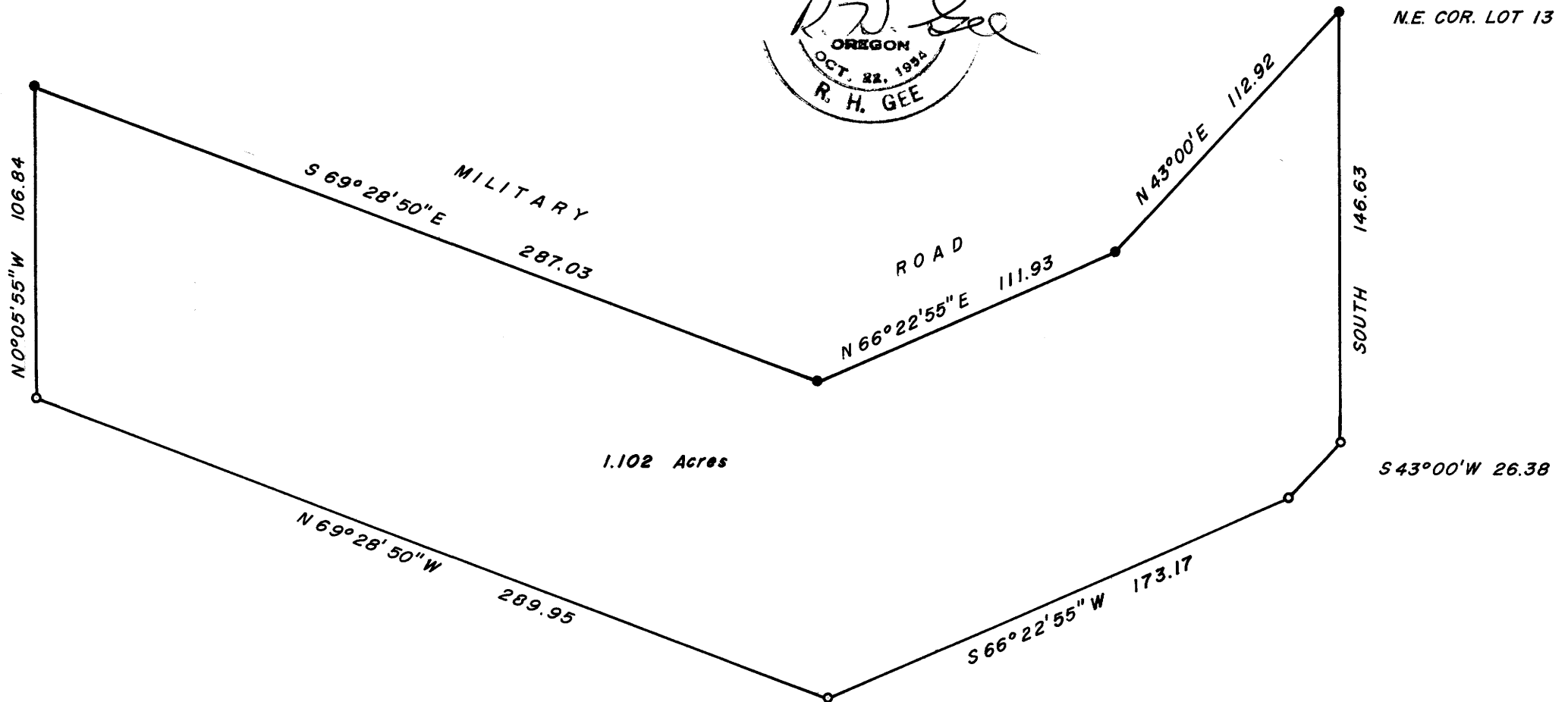
COUNTY SURVEYORS FILE DATA
DO NOT REMOVE FROM OFFICE

SURVEY OF PORTION OF LOT 13
PLAT E, UMPQUA PARK FRUIT LANDS
SURVEYED FOR STEVENSON REALTY
SURVEYED BY R. H. GEE
FEBRUARY, 1967 - SCALE 1" = 50'



BEARINGS BASED ON
C.S. MAP FILE M. 20-78

N.W. COR. LOT 13



- DENOTES IRON ROD WITH STEEL CAP FOUND
- DENOTES 5/8" IRON ROD SET

FILED *LL*
RECEIVED

MAR 2 1967

COUNTY SURVEYOR
DOUGLAS COUNTY, ORE.

SEE M 32-69