

COUNTY SURVEYORS FILE DATA  
DO NOT REMOVE FROM OFFICE

# SURVEY OF SECTION 10, T, 25 S., R. 1 W., W.M.

SURVEYED FOR U.S. PLYWOOD CORP.  
SURVEYED BY T.E. SHRUM, JR.

DECEMBER 1966  
SCALE 1" = 500'

*Thomas E. Shrum, Jr.*

Sec. Cor. S 3, 4, 9, & 10

N 1/4 Cor.

Sec. Cor. S 2, 3, 10, & 11

Set 2 1/2" dia. Aluminum cap

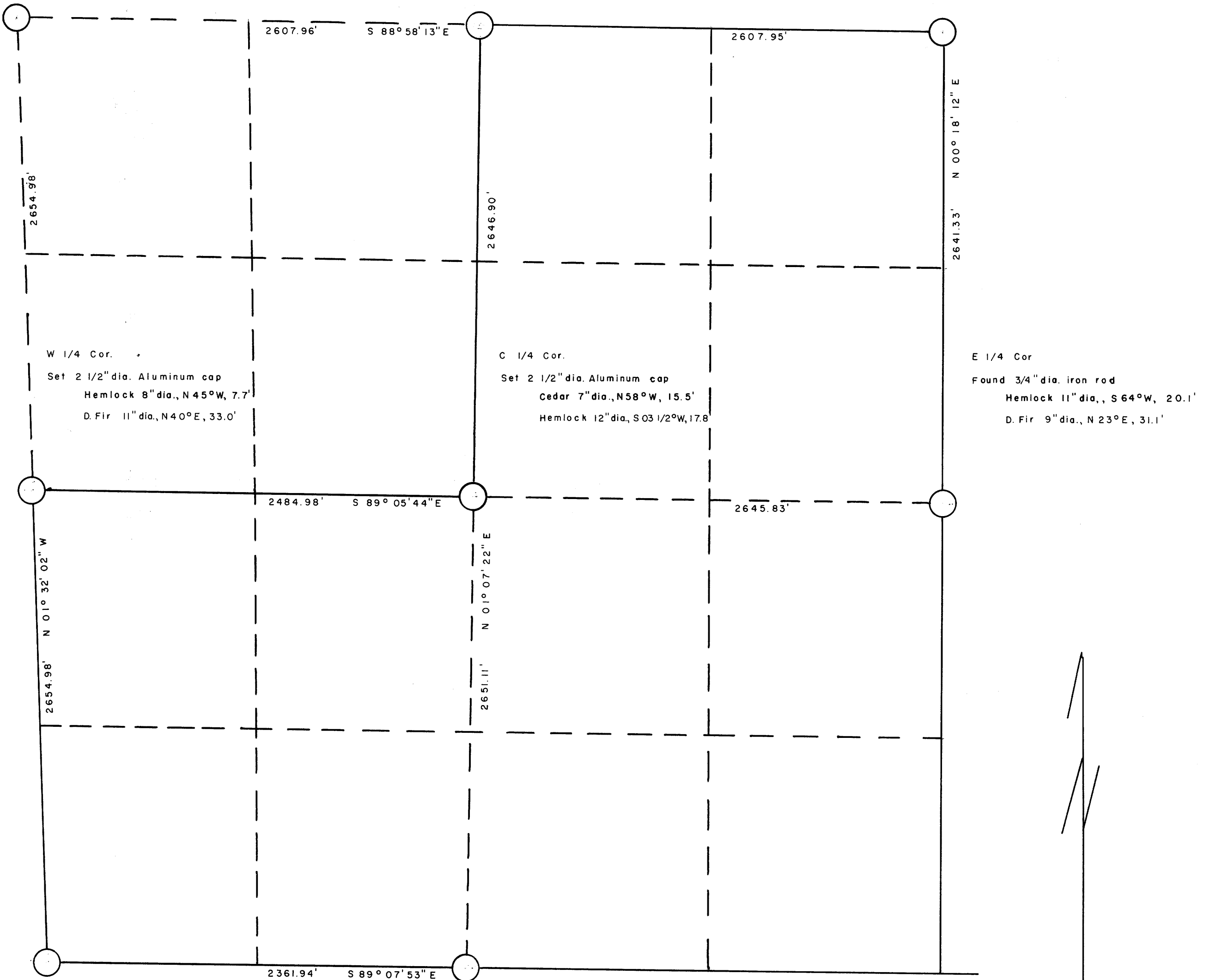
- Red Cedar 18" dia., S10°E, 44.2'
- Hemlock 4" dia., N 16 1/2°W, 23.3'
- Hemlock 6" dia., S 47°W, 17.7'
- Red Cedar 22" dia., N49°E, 23.0'

Set 2 1/2" dia. Aluminum cap

- D. Fir 6" dia., S33 1/2°W, 30.2'
- D. Fir stump 40" dia., N 36°E, 52.1'

Found 2 1/2" Brass cap, County

- D. Fir 16" dia., N 48°E, 36.7'
- S. Pine 36" dia., N 21°W, 20.5'
- D. Fir 10" dia., S 15°W, 29.2'
- Hemlock 20" dia., S 85°E, 20.0'



Sec. Cor. S 9, 10, 15, & 16

- Found 1 1/2" dia. galv. iron pipe
- Hemlock 5" dia., S 79°W, 7.8'
- Hemlock 8" dia., N 60°E, 28.5'
- Cedar 7" dia., S 74°E, 49.5'

S 1/4 Cor.

- Found Hemlock 8" dia. which is corner
- Hemlock 20" dia., S 51°E, 18.3'
- Dogwood 5" dia., N 05°E, 17.5'
- Hemlock 8" dia., N 25°E, 33.2'

E 1/4 Cor.

- Found 3/4" dia. iron rod
- Hemlock 11" dia., S 64°W, 20.1'
- D. Fir 9" dia., N 23°E, 31.1'

FILED  
RECEIVED

MAR 3 1967

COUNTY SURVEYOR  
DOUGLAS COUNTY, ORE.

Bearings computed from solar observation.