

# SURVEY OF SECTION 4, T. 25 S., R. 1 W., W.M.

SURVEYED FOR U.S. PLYWOOD CORP.  
SURVEYED BY T.E. SHRUM, JR.

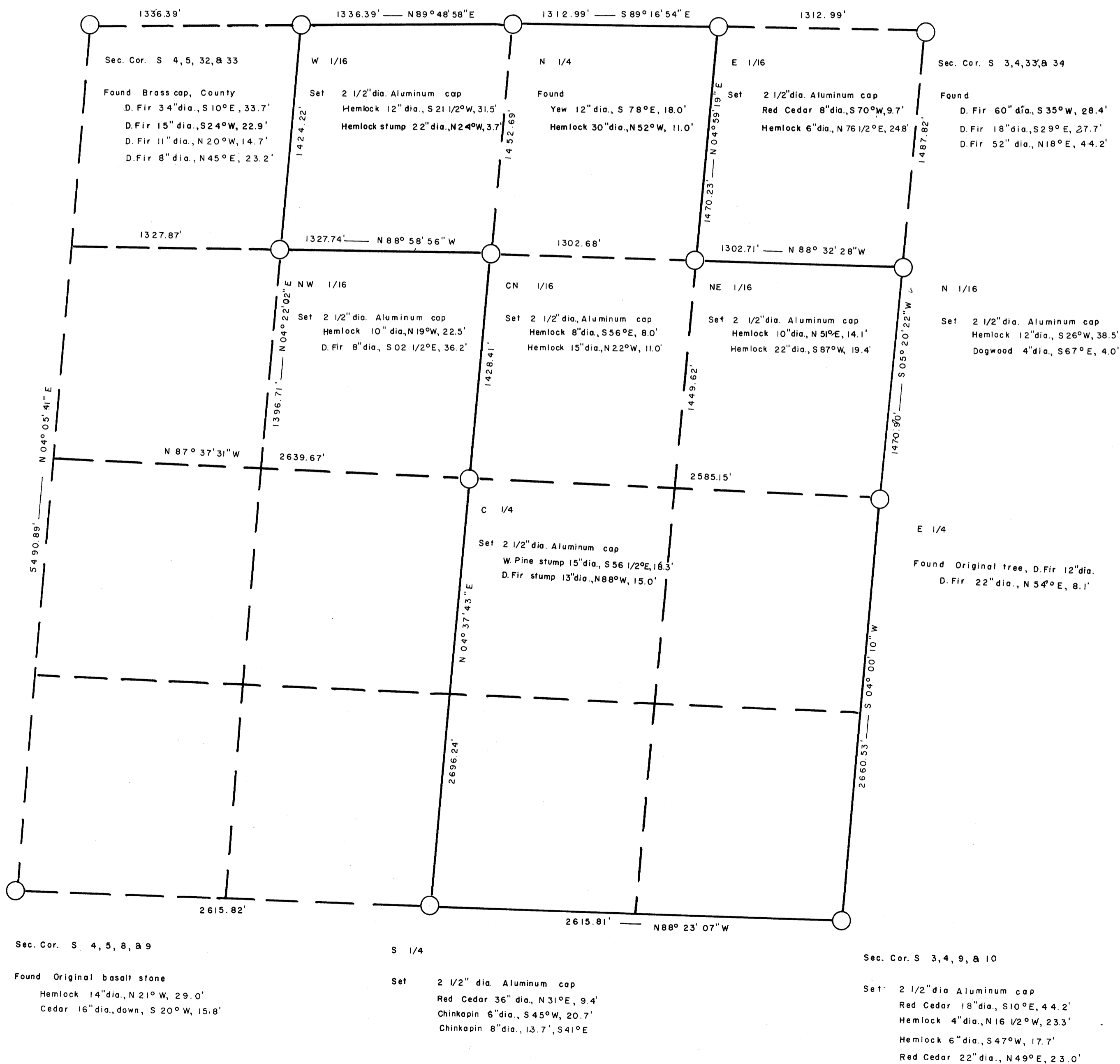
NOVEMBER 1966  
SCALE 1" = 500'

*Thomas E. Shrum, Jr.*

FILED RECEIVED

MAR 3 1967

COUNTY SURVEYOR  
DOUGLAS COUNTY, ORE.



Bearings computed from solar observation.