

COUNTY SURVEYORS FILE DATA
DO NOT REMOVE FROM OFFICE

A PORTION OF UMPQUA DEVELOPMENT CORP. PROPERTY IN SEC. 11, T. 28 S., R. 6 W. W. M.

SURVEYED FOR - UMPQUA DEVELOPMENT CORP.
SURVEYED BY - W. S. BARNES

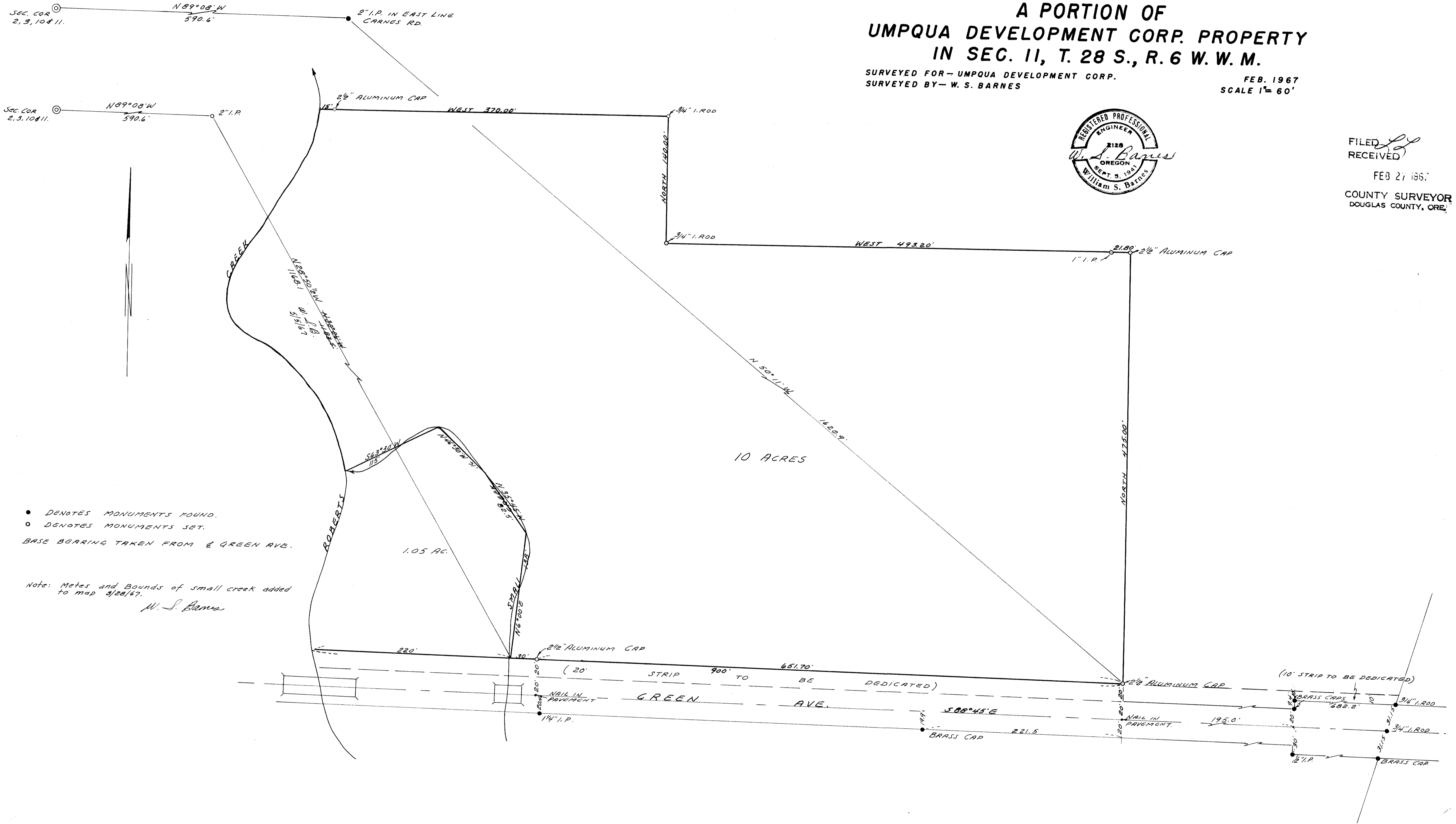
FEB. 1967
SCALE 1" = 60'



FILED
RECEIVED

FEB 27 1967

COUNTY SURVEYOR
DOUGLAS COUNTY, ORE.



- DENOTES MONUMENTS FOUND.
 - DENOTES MONUMENTS SET.
- BASE BEARING TAKEN FROM E GREEN AVE.

Note: Notes and Bounds of small creek added to map 3/28/67.
W. S. Barnes

MAP FILE M. 32. 7. 55
NW 1/4