

COUNTY SURVEYORS FILE DATA
DO NOT REMOVE FROM OFFICE

SURVEY IN SECTION 16, T. 27 S., R. 6 W., W. M.

SURVEYED FOR ALVIN LUELLEN

SURVEYED BY R. H. GEE JANUARY, 1967

SCALE 1" = 50'

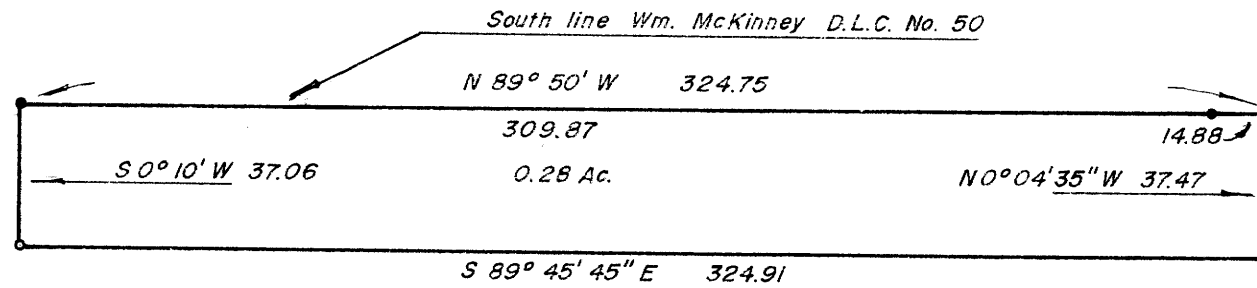
M 32-54

Initial point

S.W. corner to Section 16, T. 27 S., R. 6 W., W. M.
bears South 3019.94' & West 1981.56'
S.W. corner to Wm. McKinney D.L.C. No. 50
bears N 89° 50' W 1459.80'

Bearings based on solar observation

- Denotes 5/8" iron rod found
- Denotes 5/8" iron rod set



FILED *LL*
RECEIVED

FEB 1 1967

COUNTY SURVEYOR
DOUGLAS COUNTY, ORE.

SE 1/4 OF NW 1/4

M 32-54

Φ