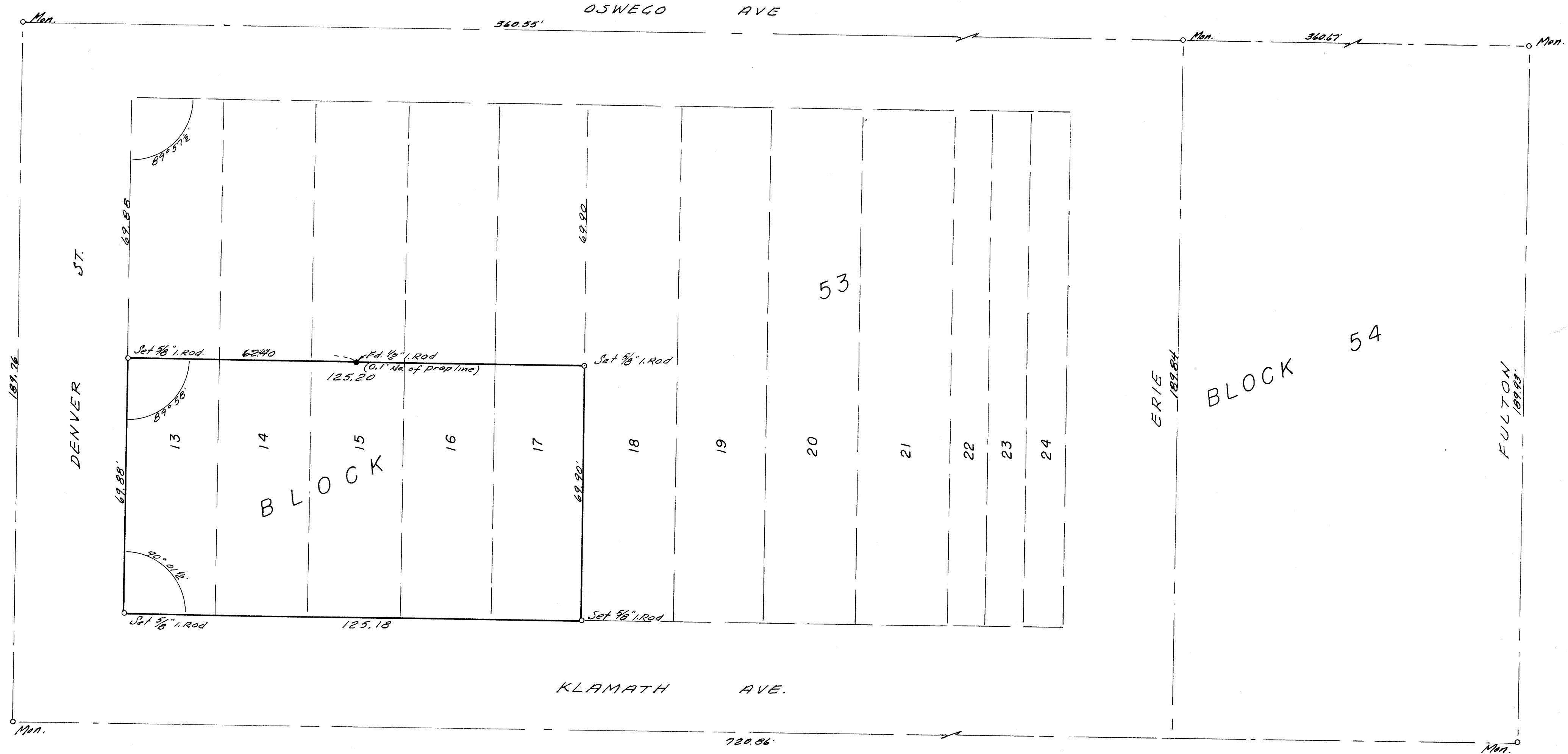


SURVEY TO ESTABLISH PROPERTY CORNERS
IN BLOCK 53, KINNEY'S IMPROVED PLAT.
ROSEBURG, OREGON.

SURVEYED FOR - EARL STRANG
SURVEYED BY - W. S. BARNES

JULY 1966
SCALE 1" = 20'

MAP FILE M.32 P.1



Reference - C.S. File 46/112.

FILED
RECEIVED
AUG 3 1966
COUNTY SURVEYOR
DOUGLAS COUNTY, ORE.

MAP FILE M.32 P.1