

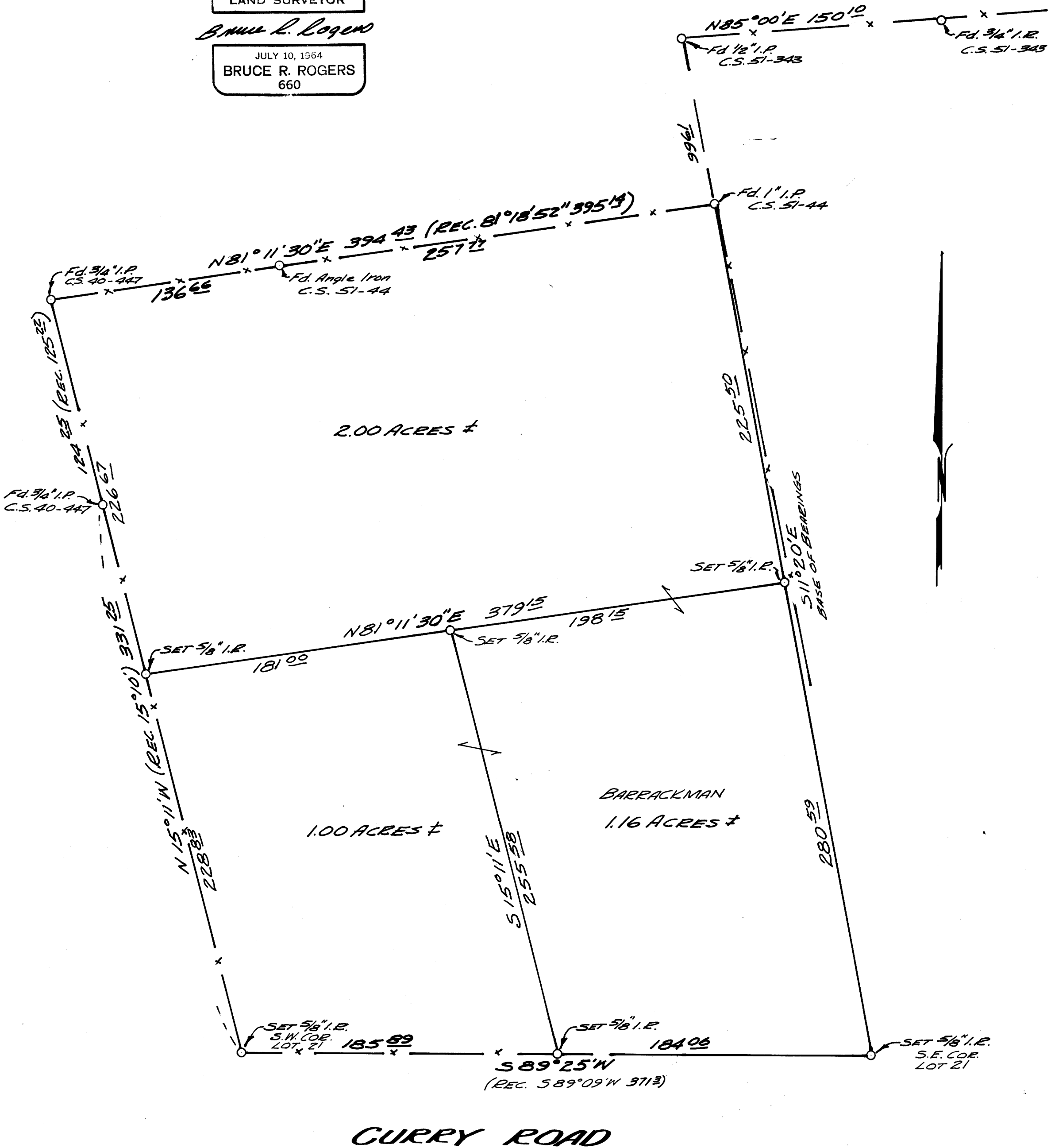
COUNTY SURVEYORS FILE DATA  
DO NOT REMOVE FROM OFFICE

A SURVEY IN LOT 21, PLAT "C" N. GURRY ESTATE  
SURVEYED FOR CHAS. BARRACKMAN  
by BRUCE ROGERS NOV. 1, 1966  
SCALE - 1" = 50'

REGISTERED  
OREGON  
LAND SURVEYOR

Bruce R. Rogers

JULY 10, 1964  
BRUCE R. ROGERS  
660



FILED  
RECEIVED

NOV 4 1966

COUNTY SURVEYOR  
DOUGLAS COUNTY, ORE.