

COUNTY SURVEYORS FILE DATA
DO NOT REMOVE FROM OFFICE

FILED *LL*
RECEIVED
JUL 19 1963
COUNTY SURVEYOR
DOUGLAS COUNTY, ORE.

Revised Map To Correct Errors in Original Survey October 19, 1966
M 26-17
SURVEY IN SEC. 31 T 32 S R 6 W W.M.

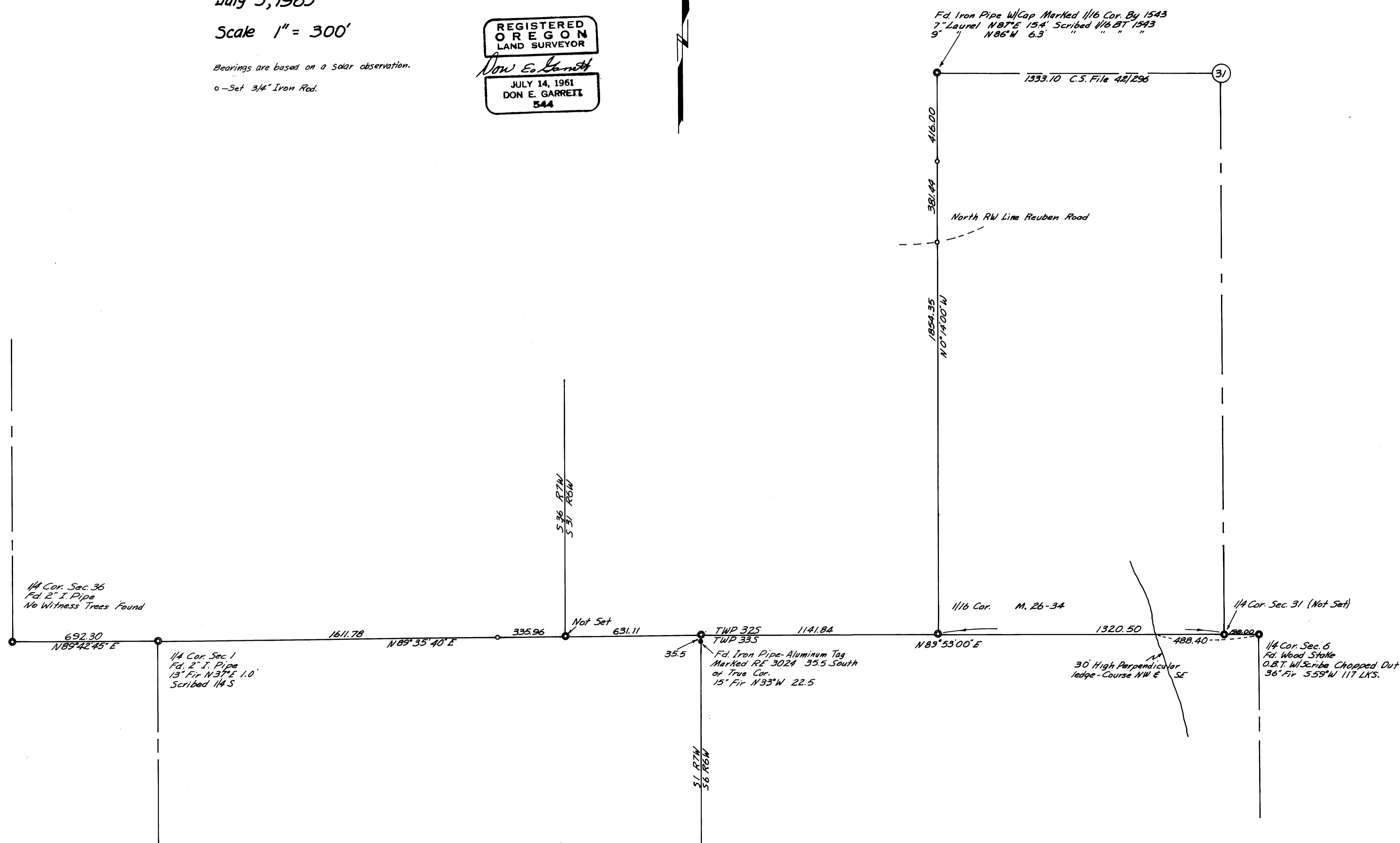
Surveyed for Holly Hough
Surveyed by Don Garrett
July 5, 1963

Scale 1" = 300'

Bearings are based on a solar observation.
o - Set 3/4" Iron Rod.

REGISTERED
OREGON
LAND SURVEYOR

Don E. Garrett
JULY 14, 1961
DON E. GARRETT
544



MAP FILE M32 - 29

MAP FILE M32 - 29