

COUNTY SURVEYORS FILE DATA
DO NOT REMOVE FROM OFFICE

SURVEY TO ESTABLISH PROPERTY CORNERS IN SECTION 20, T27S, R5W, W.M.

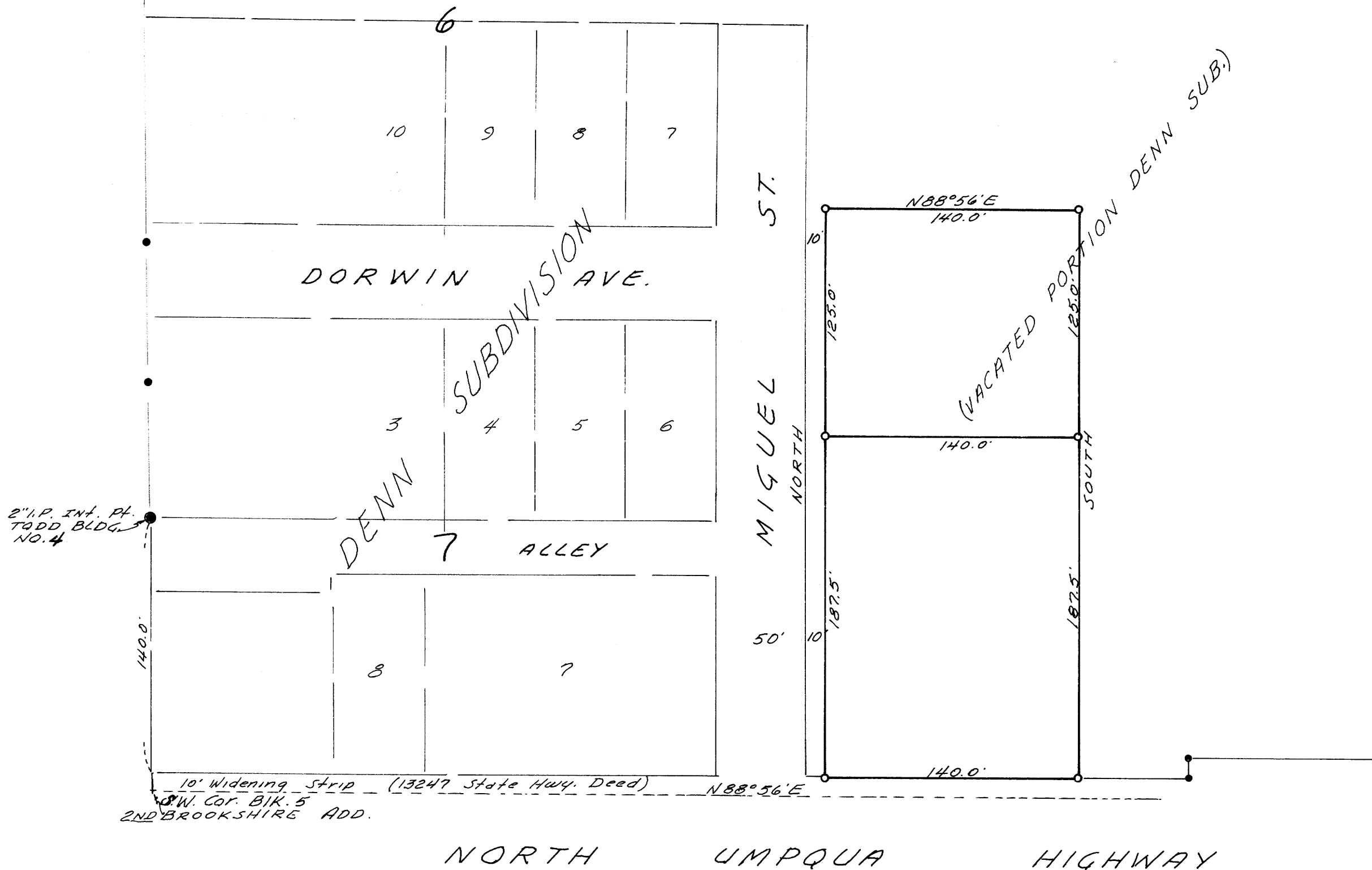
SURVEYED FOR - HENRY A. DENN
SURVEYED BY - W.S. BARNES

OCT. 1966
SCALE - 1" = 60'

FILED
RECEIVED

OCT 12 1966

COUNTY SURVEYOR
DOUGLAS COUNTY, ORE.



- Monuments found.
 - 3/4" Iron rods set.
- Base bearing taken from MIGUEL ST. bearing - North.

