

NE 1/4 NW 1/4 SECT. 36, T. 21 S., R. 5 W. W.M.  
SURVEY FOR DEED DESCRIPTION.  
SCALE 1" = 100' SEPT. 6, 1966

⊙ ← Fd. Corner Tree  
N.E. Corner  
ESTAS D.L.C. # 37

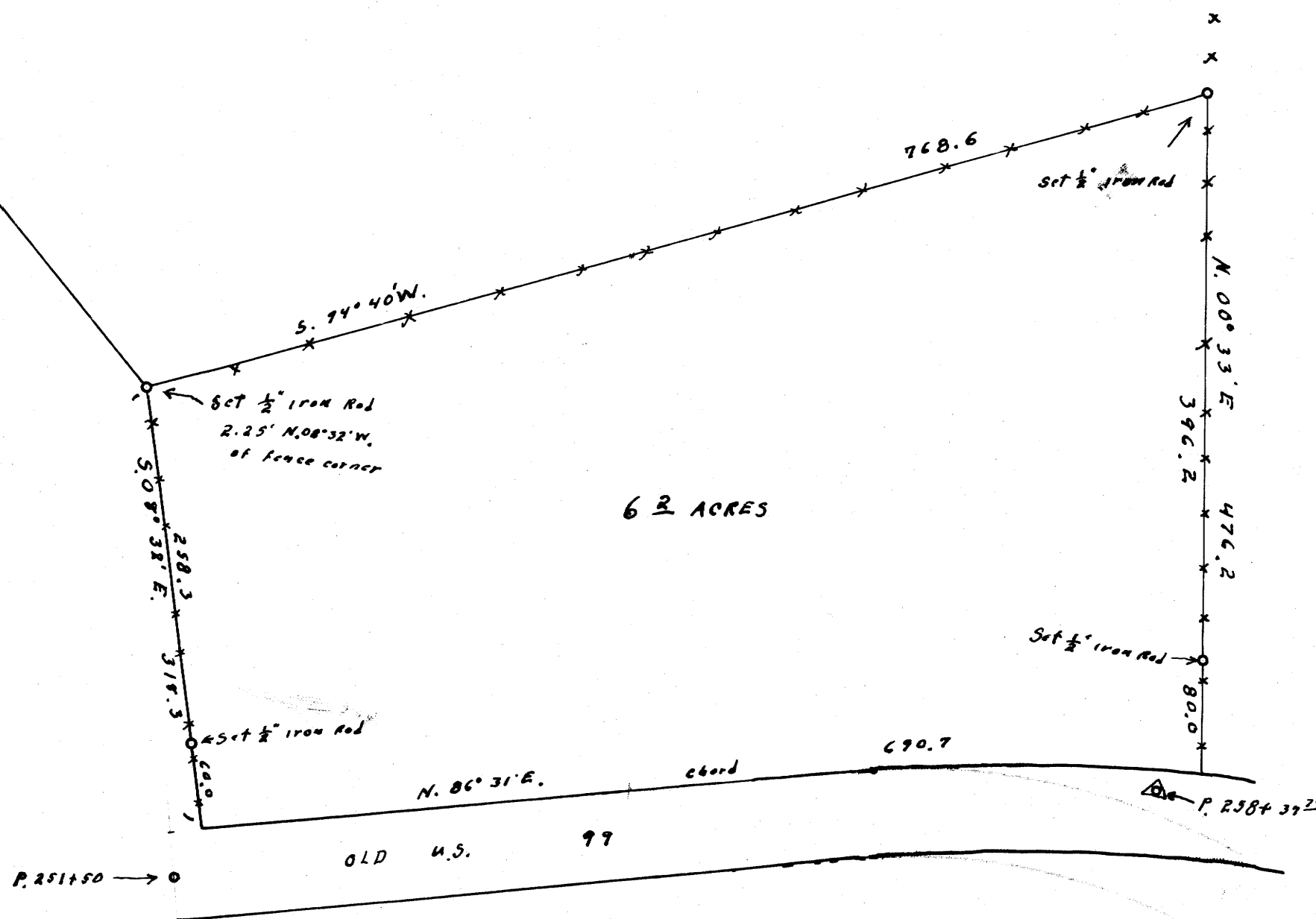
N. 38° 27' W.

2441.1

REGISTERED  
OREGON  
LAND SURVEYOR  
*Wilford N. Haines*  
MAY 7, 1948  
WILFORD N. HAINES  
239

FILED  
RECEIVED  
SEP 21 1966

COUNTY SURVEYOR  
DOUGLAS COUNTY, ORE.



6.2 ACRES

P. 251150 → ⊙

OLD U.S. 99

P. 2584 3722