

COUNTY SURVEYORS FILE DATA
DO NOT REMOVE FROM OFFICE

COUNTY SURVEYOR'S OFFICE
DOUGLAS COUNTY, OREGON.
Surveys in
SECTION 30
T. 32 S., R. 5 W., W. M.

REGISTERED
OREGON
LAND SURVEYOR
Geo. J. Wenderoth
MARCH 10, 1944
George J. Wenderoth
5

16" W. Oak S. 43° E. 37.6
16" Pine N. 78° 25' E. 29.2
22" Pine N. 75° 15' W. 39.5
15" Fir S. 25° 42' W. 44.9
1/4" I. Pipe

24 19
25 30

Old Hwy
Cow Cr

R. 6 W.
R. 5 W.

N. 0° 17' E. 5354.6

New Highway

Toe Hill
2677.3
Top Ridge

25 30
36 31

16" Fir for Corner
14" Fir N. 10° E. 5.28
14" Fir N. 83° W. 33.0
14" Fir S. 40° W. 11.9
30" Fir S. 61° E. 21.8 Stump

Witness Corner
20" Ash N. 25° E. 21.8
30" Oak S. 2° W. 44.2
1/2" I. Pipe
20" Ash S. 75° 20' E. 24.3
14" Ash N. 42° 20' W. 43.2

1/2" I. Pipe
0.30
1/2" I. Pipe
1/2" I. Pipe
Set by Baker

N. 89° 50' E. 2640.2

20" Fir S. 23° 40' W. 50.8
14" Fir N. 77° 18' 45" E. 19.6

Cow Creek

20" Alder N. 57° 20' W. 28.5
14" Ash N. 13° 20' E. 57.3
14" Alder S. 52° 15' W. 54.5
8" Alder S. 77° 10' E. 19.2
1/2" I. Pipe

19 20
30 29

Pacific Hwy.

1/2" I. Pipe
367.9
1/2" I. Pipe
957.8

3.4 Ac. 9.4 Ac.

1/2" I. Pipe
372.0
1/2" I. Pipe
956.2

S. 89° 42' W. 1328.2

32" W. Oak N. 83° 30' W. 21.8
8" W. Oak S. 41° 30' W. 46.3

1/2" I. Pipe

1/2" I. Pipe
1323.5

1/2" I. Pipe
1323.5

1/2" I. Pipe
1323.5

1/2" I. Pipe
1323.5

1/2" I. Pipe
1323.5

1/2" I. Pipe
1323.5

1/2" I. Pipe
1323.5

1/2" I. Pipe
1323.5

1/2" I. Pipe
1323.5

1/2" I. Pipe
1323.5

1/2" I. Pipe
1323.5

1/2" I. Pipe
1323.5

1/2" I. Pipe
1323.5

1/2" I. Pipe
1323.5

1/2" I. Pipe
1323.5

1/2" I. Pipe
1323.5

1/2" I. Pipe
1323.5

1/2" I. Pipe
1323.5

1/2" I. Pipe
1323.5

1/2" I. Pipe
1323.5

1/2" I. Pipe
1323.5

1/2" I. Pipe
1323.5

1/2" I. Pipe
1323.5

1/2" I. Pipe
1323.5

1/2" I. Pipe
1323.5

1/2" I. Pipe
1323.5

1/2" I. Pipe
1323.5

1/2" I. Pipe
1323.5

1/2" I. Pipe
1323.5

1/2" I. Pipe
1323.5

1/2" I. Pipe
1323.5

1/2" I. Pipe
1323.5

1/2" I. Pipe
1323.5

1/2" I. Pipe
1323.5

1/2" I. Pipe
1323.5

1/2" I. Pipe
1323.5

1/2" I. Pipe
1323.5

1/2" I. Pipe
1323.5

FILED

COUNTY SURVEYOR
DOUGLAS COUNTY, ORE.

C.S. 40/247
C.S. 40/248
MAP FILE M. 3272

**COUNTY SURVEYORS FILE DATA
DO NOT REMOVE FROM OFFICE**

3/4" I. Pipe (Set by Baker)
1/4 Corner between
Sections 19 & 30.

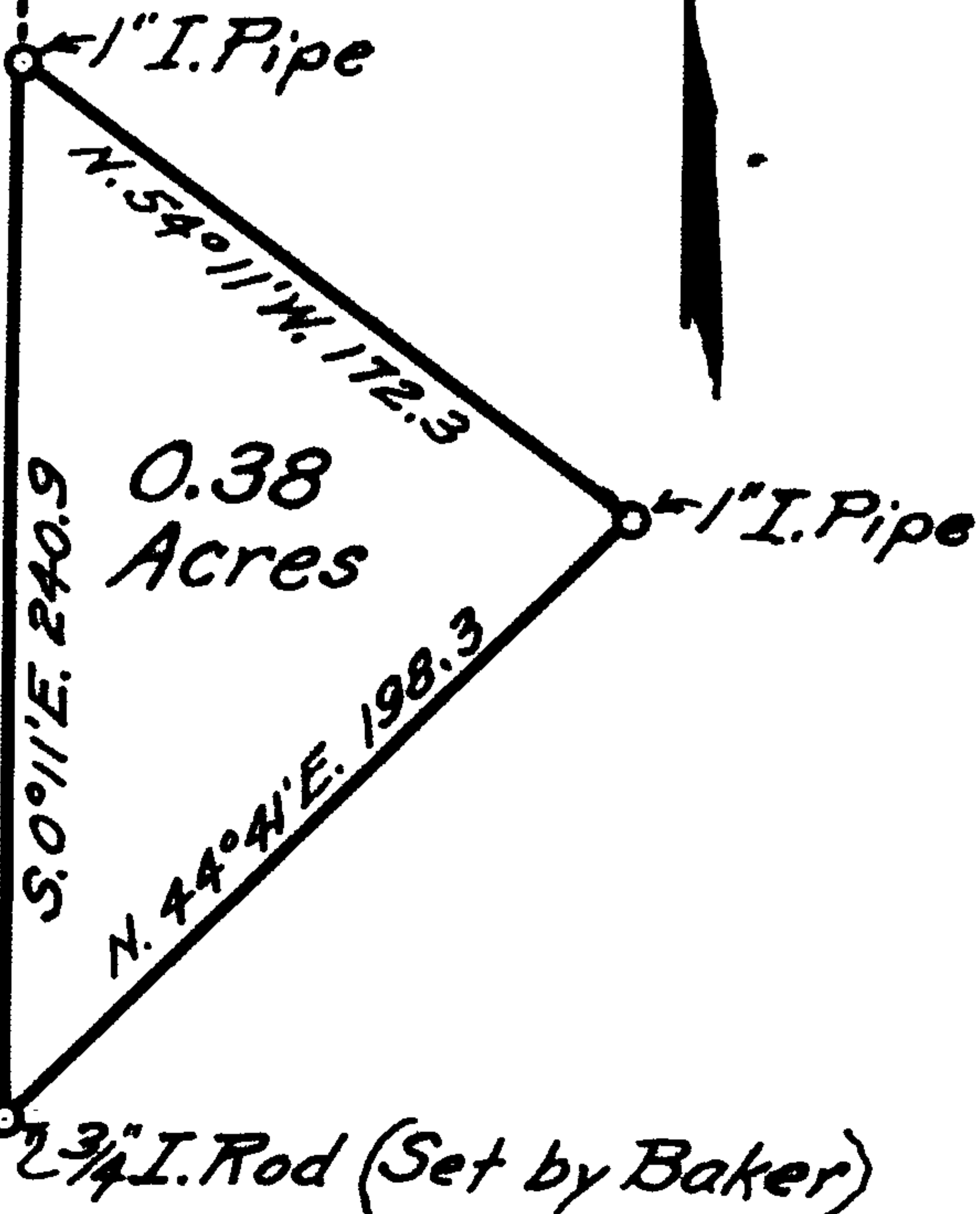
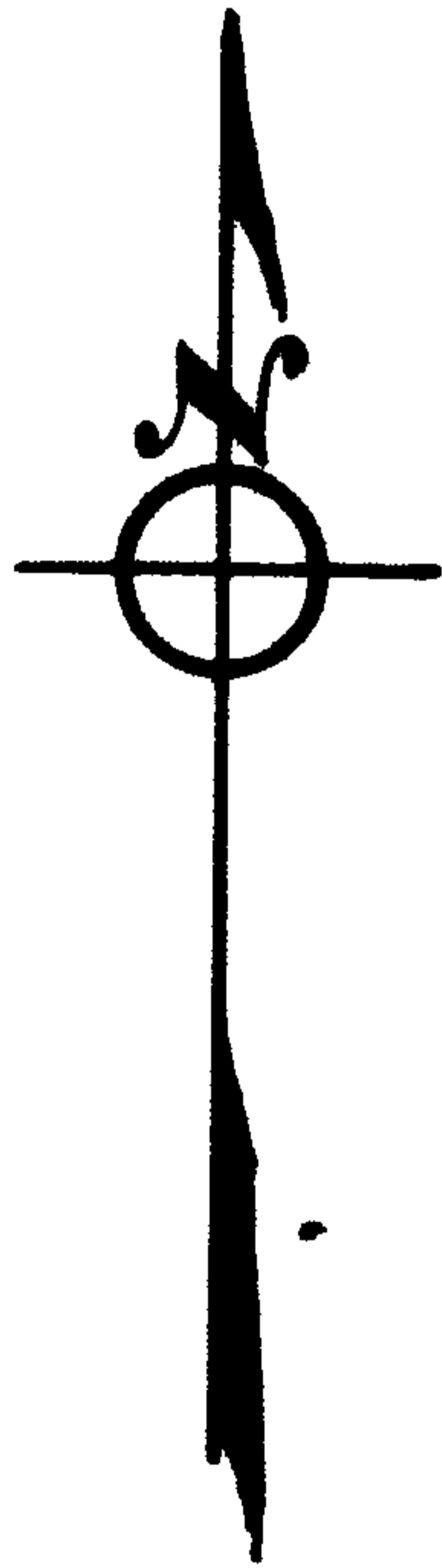
**COUNTY SURVEYOR'S OFFICE
DOUGLAS COUNTY, OREGON
SURVEY FOR
J. B. MOORE
SECTION 30. T.32S.R.5W.**

Dec. 24, 1949

Scale 1"=100'

Geo. J. Wenderoth, Surveyor.

S. 0° 11' E. 694.8



**REGISTERED
OREGON
LAND SURVEYOR**

Geo. J. Wenderoth

MARCH 10, 1944
George J. Wenderoth
5