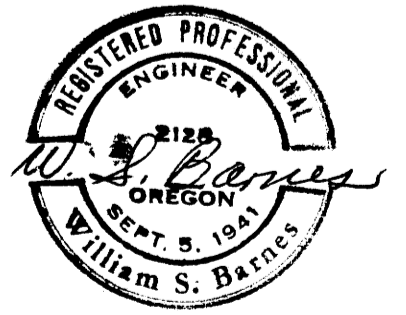
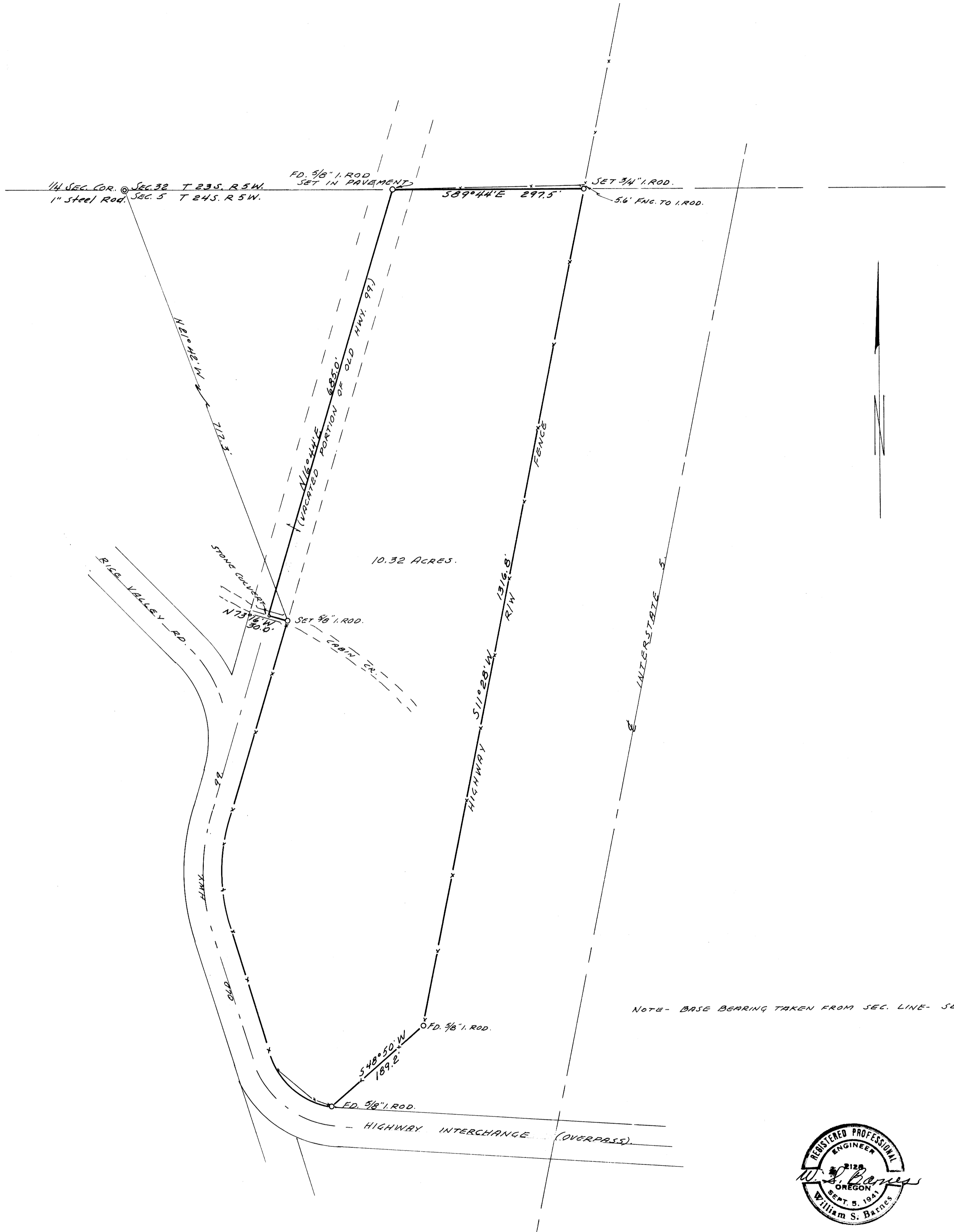


COUNTY SURVEYORS FILE DATA  
DO NOT REMOVE FROM OFFICE

SURVEY FOR DEED DESCRIPTION  
IN SECTION 5, T 24 S, R 5 W. W. M.

SURVEYED FOR - ROBT. CRAWFORD  
SURVEYED BY - W.S. BARNES

SEPT. 1966  
SCALE 1" = 100'



FILED  
RECEIVED

SEP 13 1966

COUNTY SURVEYOR  
DOUGLAS COUNTY, ORE.