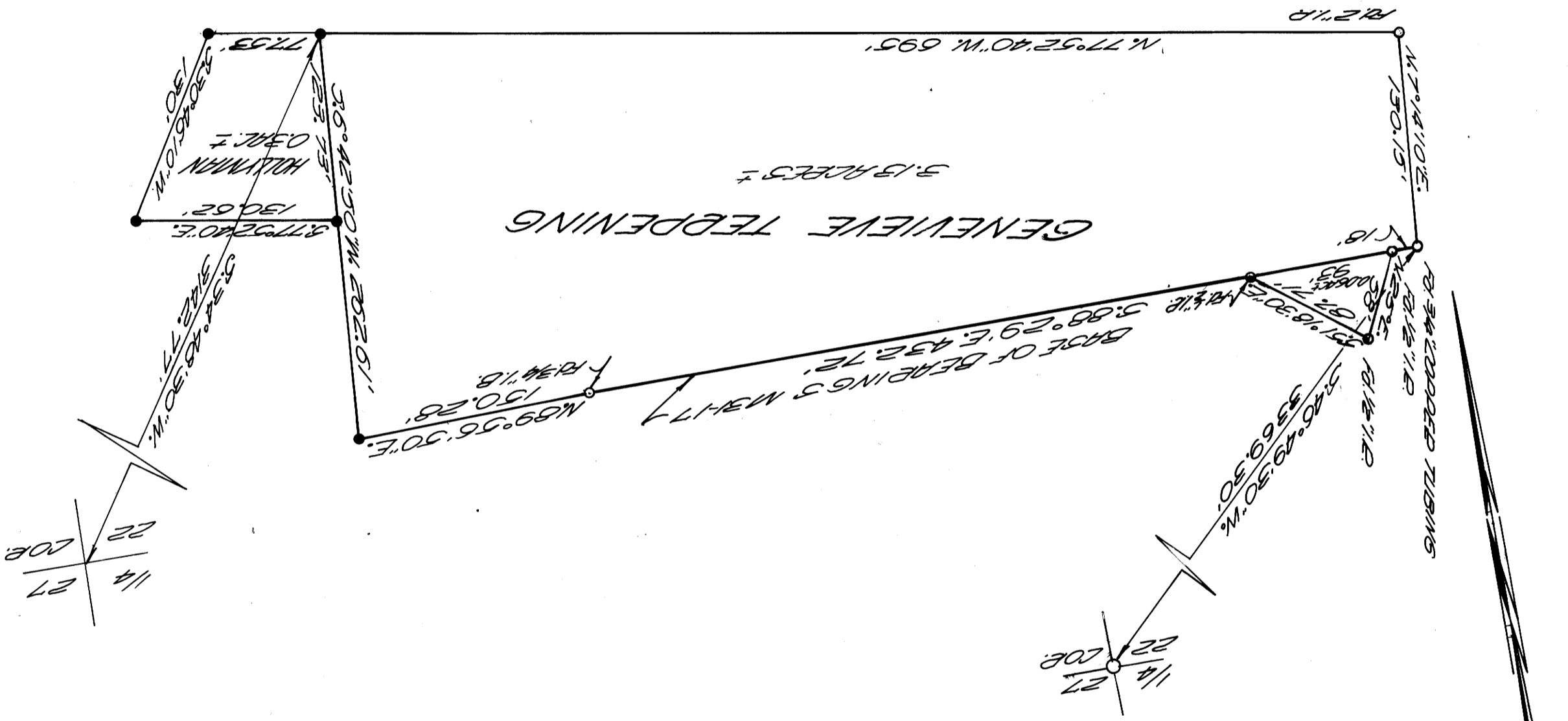


COUNTY SURVEYORS FILE DATA  
DO NOT REMOVE FROM OFFICE

SUPERVEYED FOR DEED DESCRIPTION  
SEC. 22, T. 27 S. R. 6 W. W. M.  
SUPERVEYED FOR GENEVIEVE TEPDENING  
BY BAUGHMAN SURVEY SERVICE

REGISTERED  
OREGON  
LAND SURVEYOR  
*Glenn S. Baughman*  
JULY 14, 1961  
536  
GLENN S. BAUGHMAN



SCALE 1"=80'  
AS SHOWN  
SET 3/8" I.B.

COUNTY SURVEYOR  
DOUGLAS COUNTY, ORE.

SEP 6 1966

FILED  
RECEIVED

MAP FILE M327-17

NE 1/4 SE 1/4

MAP FILE M327-17