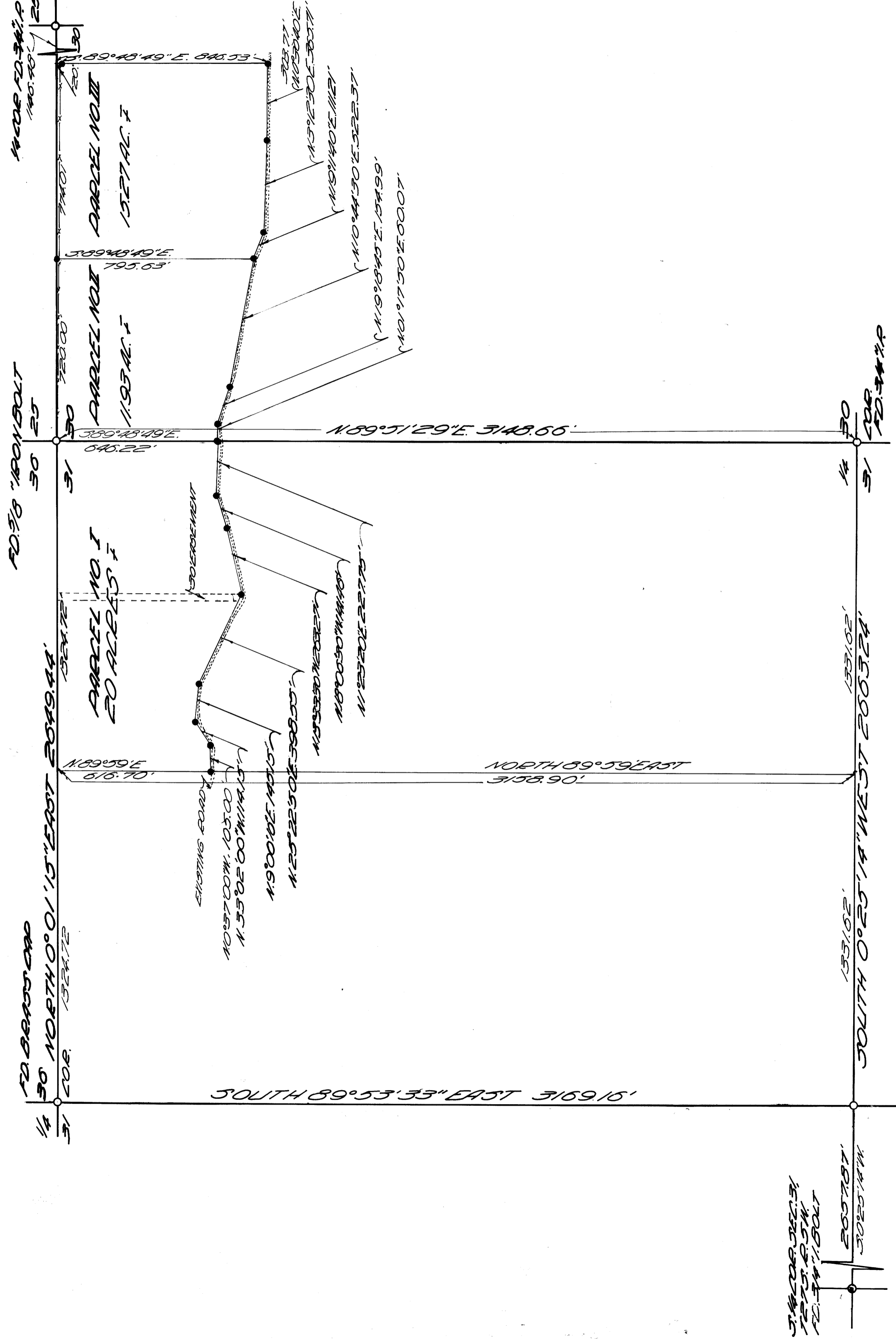


# SURVEYED FOR DEED DESCRIPTIONS SURVEYED FOR NATIONAL LAND & INVESTMENT COMPANY



REGISTER  
O  
LAND  
*Glenn S. Latham*  
JULY 19  
GLENN S. LATHAM  
533

LOCATED IN SEC. 30 & 31, T. 27 S. R. 5 W

BASE OF BEARINGS TO AR OBSERVATION

SURVEY BY BAUGHMAN

SURVEY

SEEVILLE

SCALE 1" = 300'

NET 3 1/4" IRON ROD

AS SHOWN

FILED  
RECEIVED

COUNTY CLERK  
DEPT. OF COUNTY CLERK  
DEPT. OF COUNTY CLERK

COUNTY SURVEYORS FILE DATA  
DO NOT REMOVE FROM OFFICE

FD. BRADY CAP  
1/4 31 52 206

1/4 31 52 206  
FD. BRADY CAP