

COUNTY SURVEYORS FILE DATA  
DO NOT REMOVE FROM OFFICE

M 31-79  
P

SURVEY IN SECTION 9, T. 27 S., R. 7 W., W.M.

LOT 22, DOERNER'S ADDITION TO EDEN ORCHARDS

SURVEYED FOR STANLEY F. MOHR

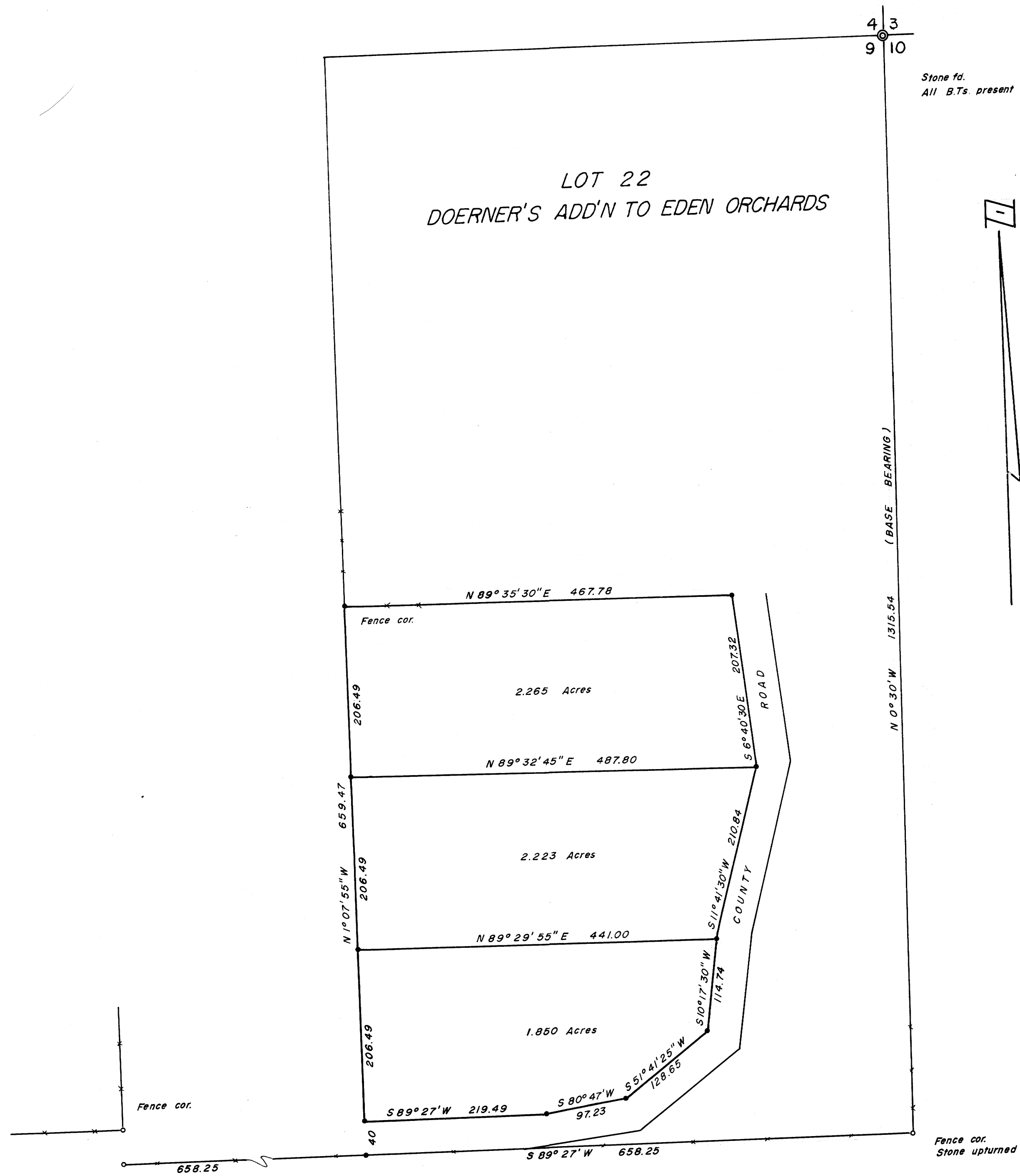
SURVEYED BY R. H. GEE - JULY, 1966 - SCALE 1" = 100'

• DENOTES 5/8" IRON ROD SET

FILED  
RECEIVED

JUL 25 1966

COUNTY SURVEYOR  
DOUGLAS COUNTY, ORE.



M 31-79