

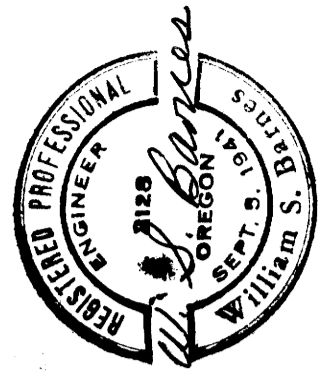
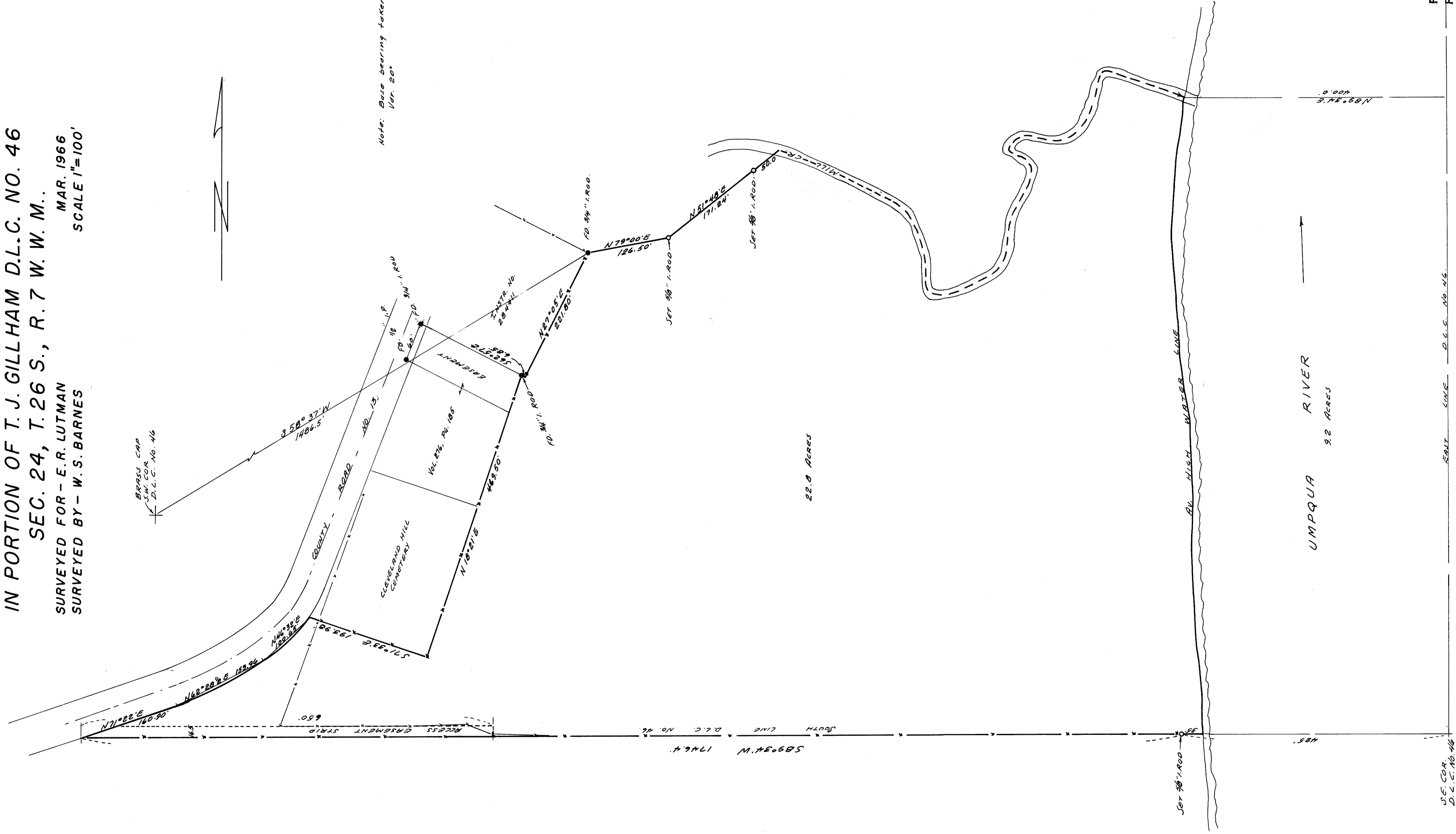
SURVEY FOR DEED DESCRIPTION
IN PORTION OF T. J. GILLHAM D.L.C. NO. 46
SEC. 24, T. 26 S., R. 7 W. W. M..
SURVEYED FOR - E. R. LUTMAN
SURVEYED BY - W. S. BARNES

MAR. 1966
SCALE 1"=100'

BRASS CAP
S.M. COR.
D.L.C. NO. 46



Note: Base bearing taken from Magnetic North
Var. 20°



FILED
RECEIVED

JUL 20 1966

COUNTY SURVEYOR
DOUGLAS COUNTY, ORE.

SEAL CONE D.L.C. NO. 46

S.E. COR.
D.L.C. NO. 46