

FILED
RECEIVED

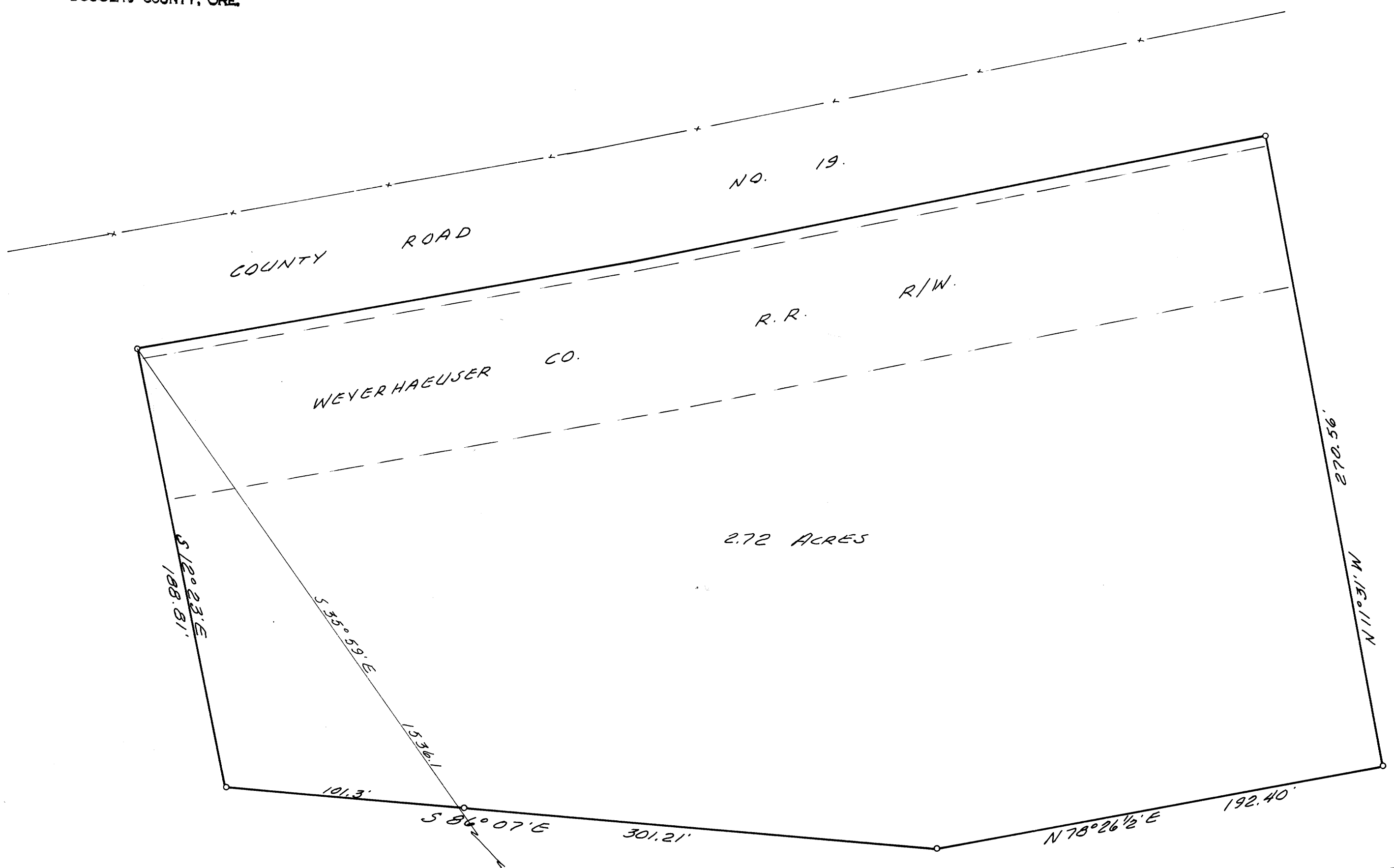
JUN 15 1966

COUNTY SURVEYOR
DOUGLAS COUNTY, ORE.

SURVEY TO ESTABLISH PROPERTY CORNERS SECTION 10, T 25 S, R 4 W. W.M.

SURVEYED FOR - ROBT. THOMAS
ENG'R. - W.S. BARNES

JUNE 1966.
SCALE 1" = 40'



Note: Base of bearings taken from West line of survey - see file No. M 9-40.

o Denotes 5/8" iron rods set.

SE. COR.
D.C.C. NO. 49.



MAP FILE M 31-68