

FILED
RECEIVED

JUN 15 1966

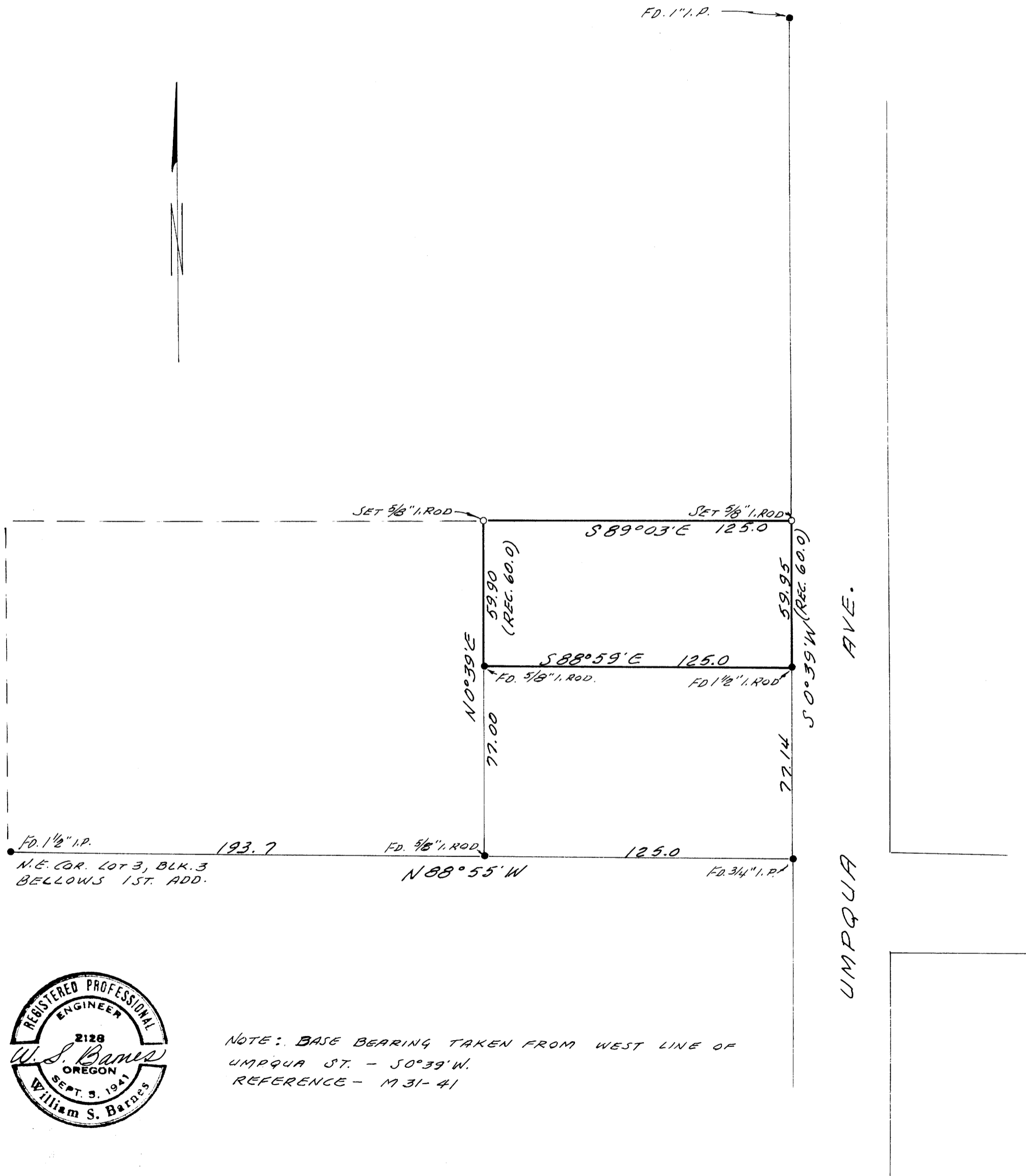
COUNTY SURVEYOR
DOUGLAS COUNTY, ORE.

SURVEY TO ESTABLISH PROPERTY CORNERS IN SEC. 13, T27S, R6W. W.M.

SURVEYED FOR - J. SCHAAN
ENG'R. - W.S. BARNES

COUNTY SURVEYORS FILE DATA
DO NOT REMOVE FROM OFFICE

JUNE 1966
SCALE - 1" = 40'



NOTE: BASE BEARING TAKEN FROM WEST LINE OF
UMPQUA ST. - 50°39'W.
REFERENCE - M 31-41