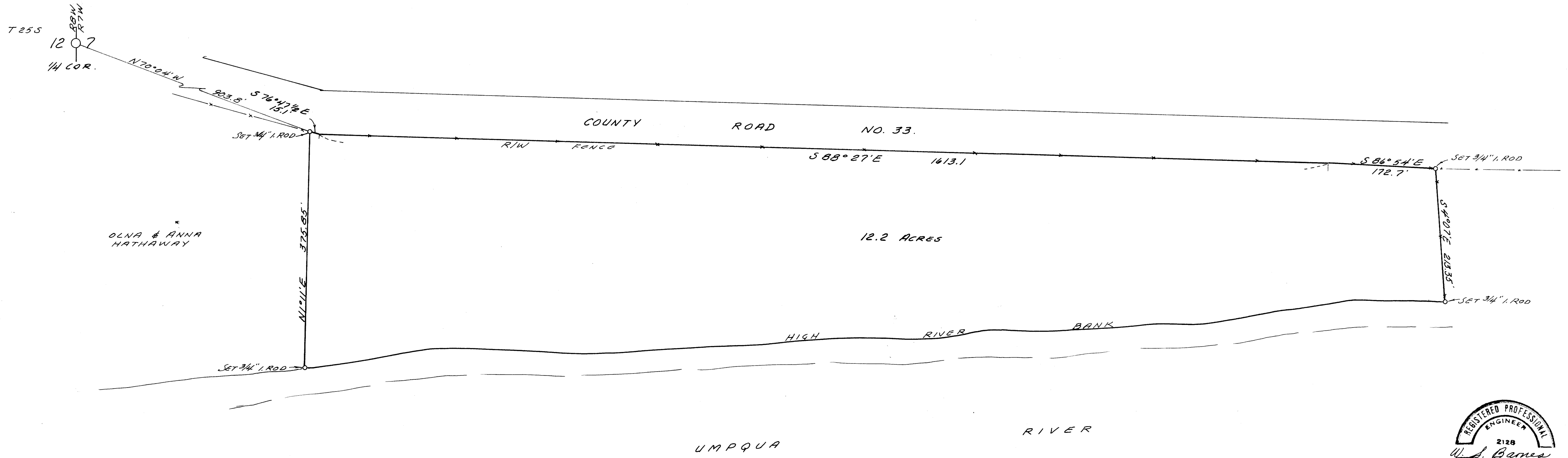


SURVEY FOR DEED DESCRIPTION IN SEC. 7, T25S, R7W. W.M.

SURVEYED FOR - JOE PRUITT
ENG'R. - W. S. BARNES

JUNE 1966
SCALE - 1" = 100'



Note: Base Bearing taken from Magnetic North.

FILED
RECEIVED
JUN 13 1966

COUNTY SURVEYOR
DOUGLAS COUNTY, ORE.

