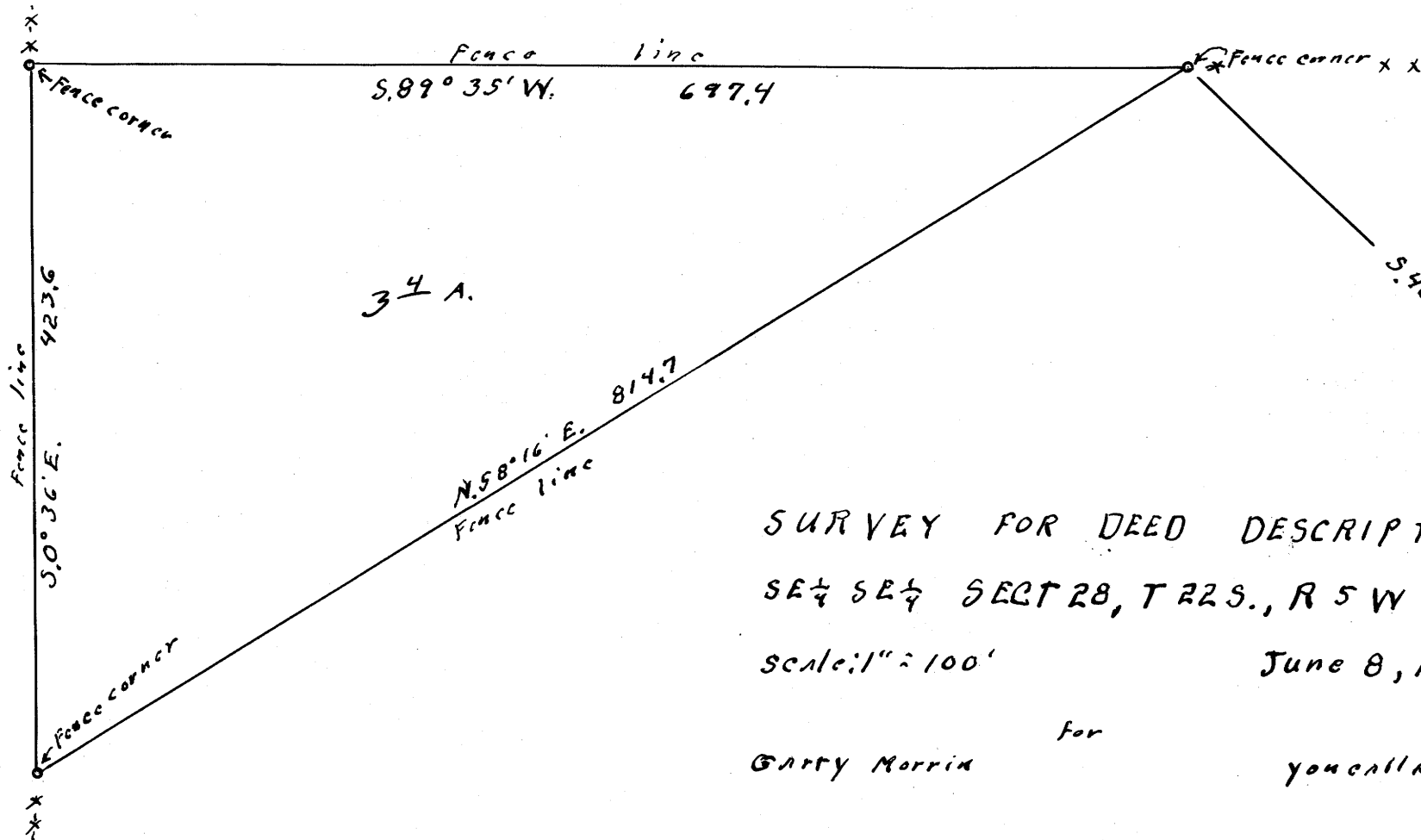


DO NOT REMOVE THIS DATA
DO NOT REMOVE THIS DATA

MAP FILE M 31 P 64



REGISTERED
OREGON
LAND SURVEYOR
Wilford N. Haines
MAY 7, 1948
WILFORD N. HAINES
239

SURVEY FOR DEED DESCRIPTION
SE 1/4 SE 1/4 SECT 28, T 22 S., R 5 W W.M.
Scale: 1" = 100' June 8, 1966

Garry Morrin for you call a, org.

T. 22 S., R. 5 W. W.M.

28 27
33 34

FILED *LL*
RECEIVED
JUN 10 1966
COUNTY SURVEYOR
DOUGLAS COUNTY, ORE.

MAP FILE M 31 P 64