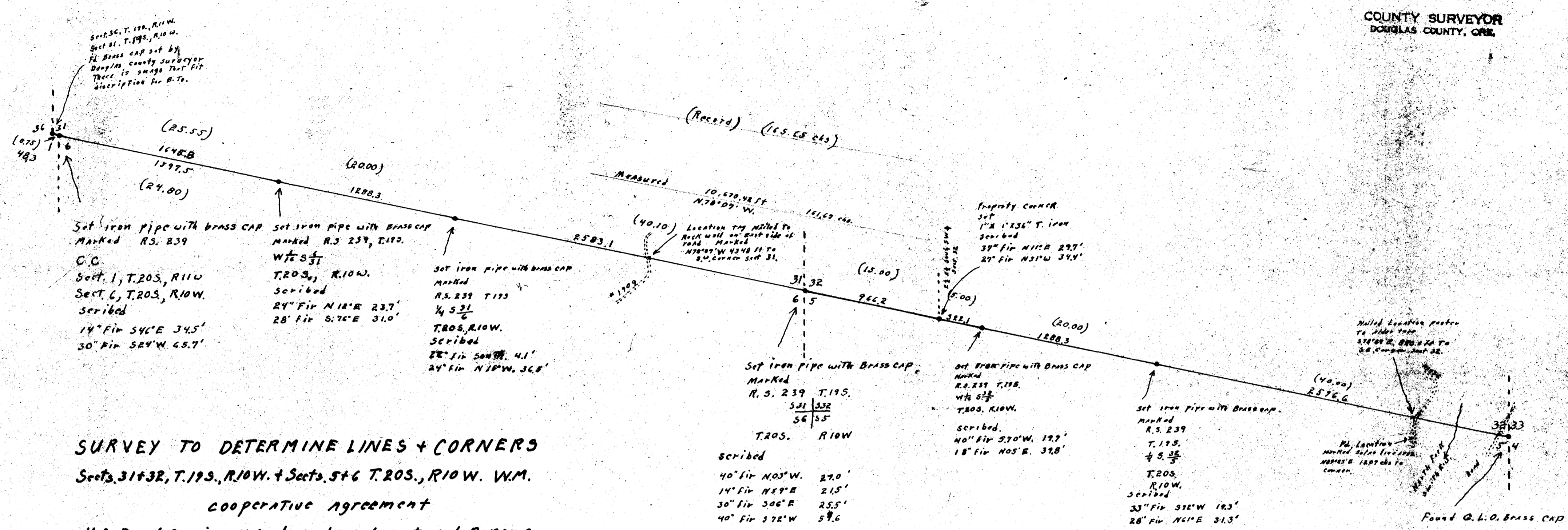


FILED *LL*
RECEIVED
DEC 28 1965
COUNTY SURVEYOR
DOUGLAS COUNTY, ORE.

C.S. MAP FILE M. 21. 7-6-1-1



SURVEY TO DETERMINE LINES + CORNERS
Sects. 31+32, T.19S., R.10W. + Sects. 5+6 T.20S., R.10W. W.M.
COOPERATIVE AGREEMENT
U.S. Forest Service, U.S. Plywood + International Paper Co.
Scale: 1" = 500' Nov. 1965



Scribed on bark
Fd. 18" Fir for corner
Now Dead
30" Cedar 534°W 63-115
No scribe visible
30" Fir 57 1/2° E 15-115
Scribe on bark

C.C.
Pl. Rock 24" 20x10"
Marked plain
18" Fir 510° E 16-115
Now 48" x 44-115
10" Fir N. 30° W.
Now 40" x
has been burned and
scar to not plain

7 8
18 17
Set 1" x 1" x 36"
Iron
Fd. 5" fir 540°W 70-115
Now stub about 200 high
Scribe W. v. B.T. plain

There is two unrecorded B.Ts both firs
These scribed trees here in 1961 when I first
visited this corner.

Milled Location posted
to show tree
574°W 2, 880.54 to
S.E. corner of Sect 32.

Pl. Location
marked to show
N 84° E 1807 obs to
corner.

Found G. L. O. Brass cap