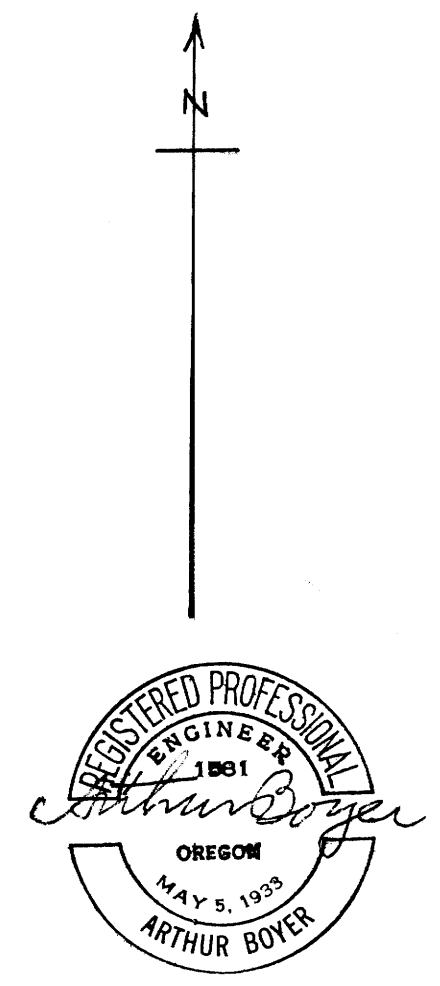
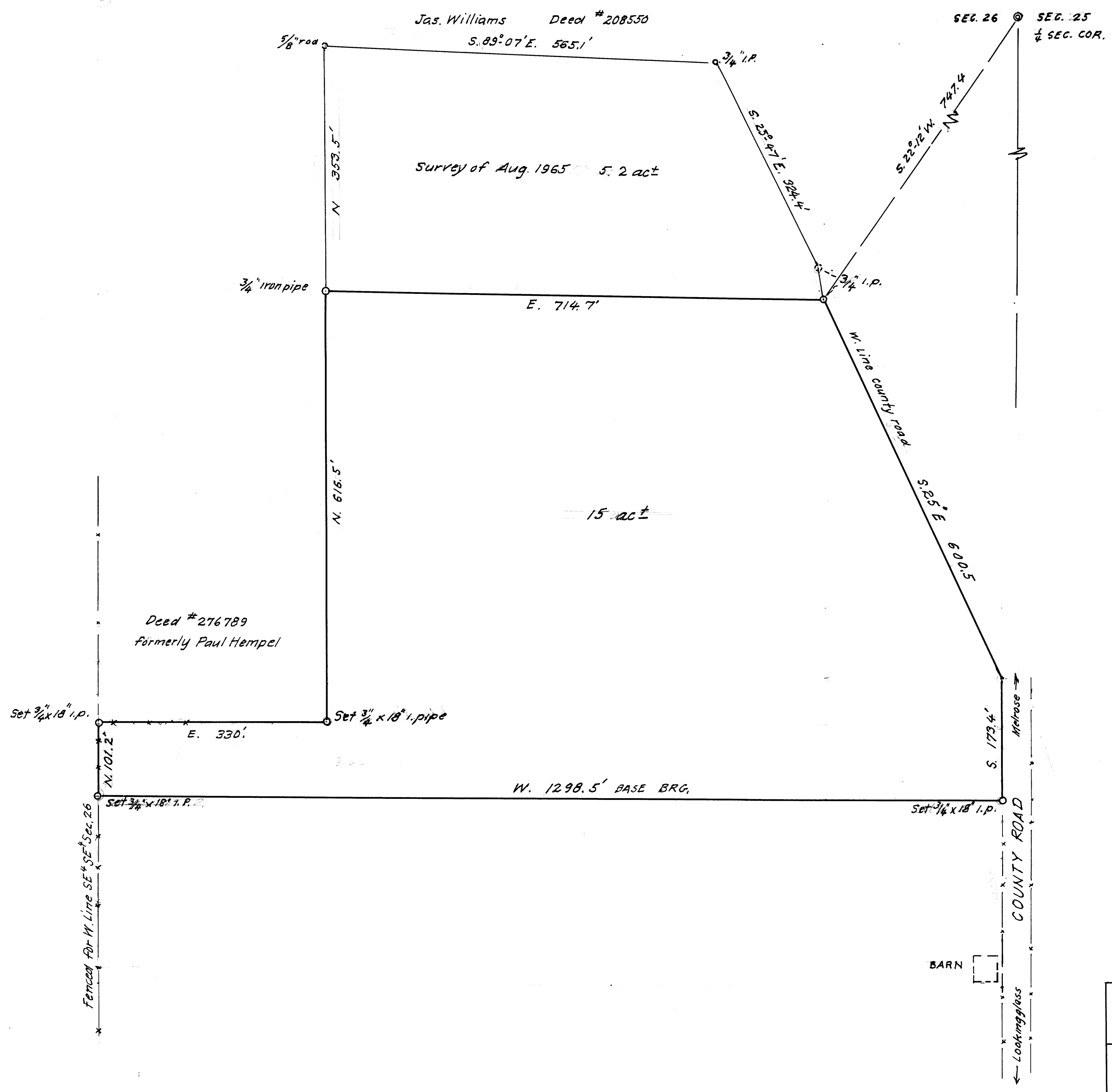


MAP FILE M.31.1-54



FILED *LL*  
 RECEIVED  
 MAY 1966  
 COUNTY SURVEYOR  
 DOUGLAS COUNTY, ORE.

**COUNTY SURVEYORS FILE DATA  
 DO NOT REMOVE FROM OFFICE**

ROBERT E. & JANICE H. McCORD  
 TO MR & MRS ALBERT POWELL

IN SEC. 26, T.27S; R.7W; WIL. MER.  
 DOUGLAS COUNTY, ORE.

APR. 1966 1" = 100 FT.

MAP FILE M.31.1-54