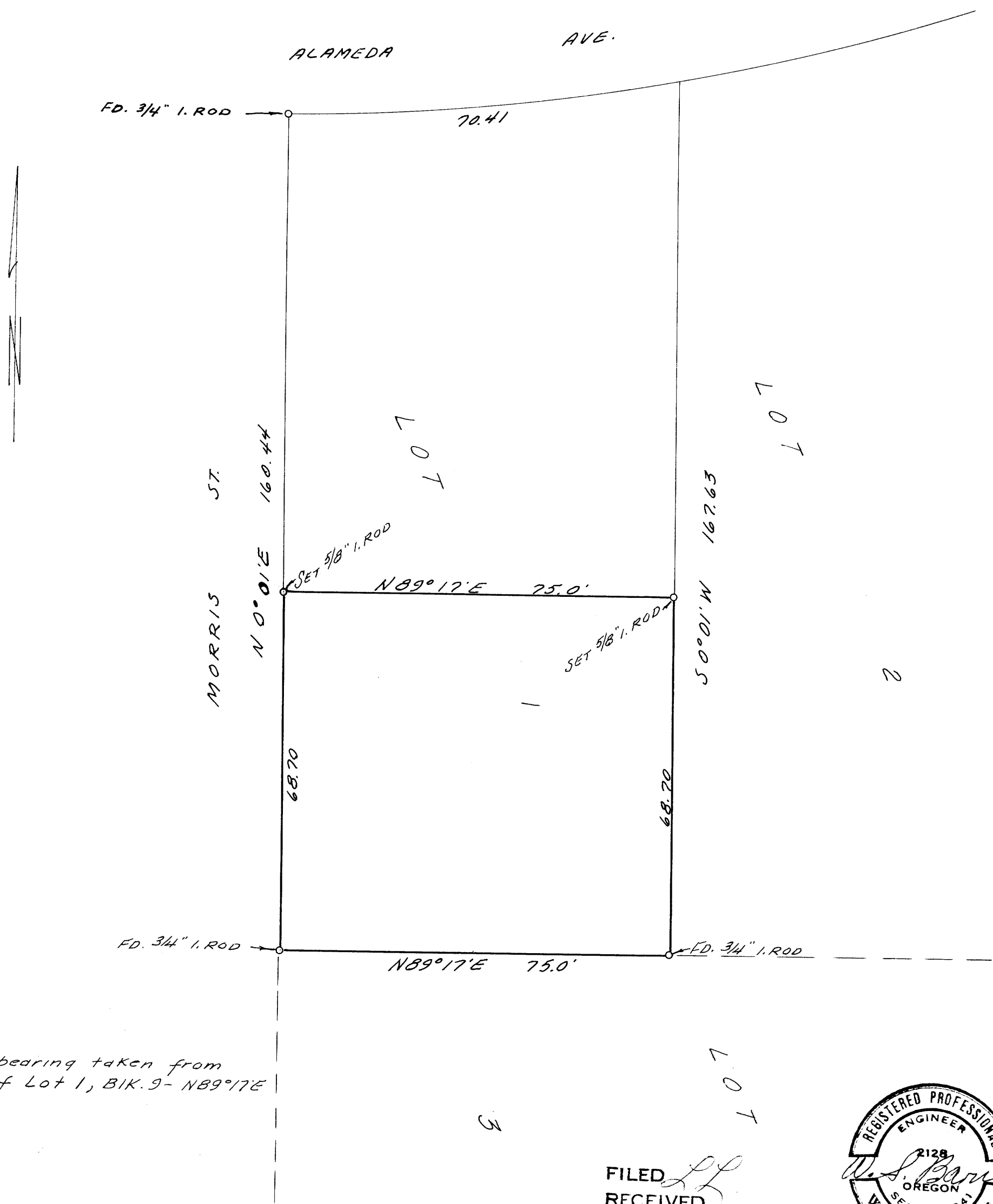


COUNTY SURVEYORS FILE DATA
DO NOT REMOVE FROM OFFICE

SURVEY FOR DEED DESCRIPTION
IN LOT 1, BLOCK 9, RESUBDIVISION
OF CLOVERDALE ADD. TO ROSEBURG.

ENG'R. - W.S. BARNES
SURVEYED FOR - C.M. SAAR

MAY, 1966
SCALE 1" = 20'



Note: Base bearing taken from
south line of Lot 1, BIK. 9 - N89°17'E

FILED
RECEIVED
MAY 5 1966
COUNTY SURVEYOR
DOUGLAS COUNTY, ORE.

