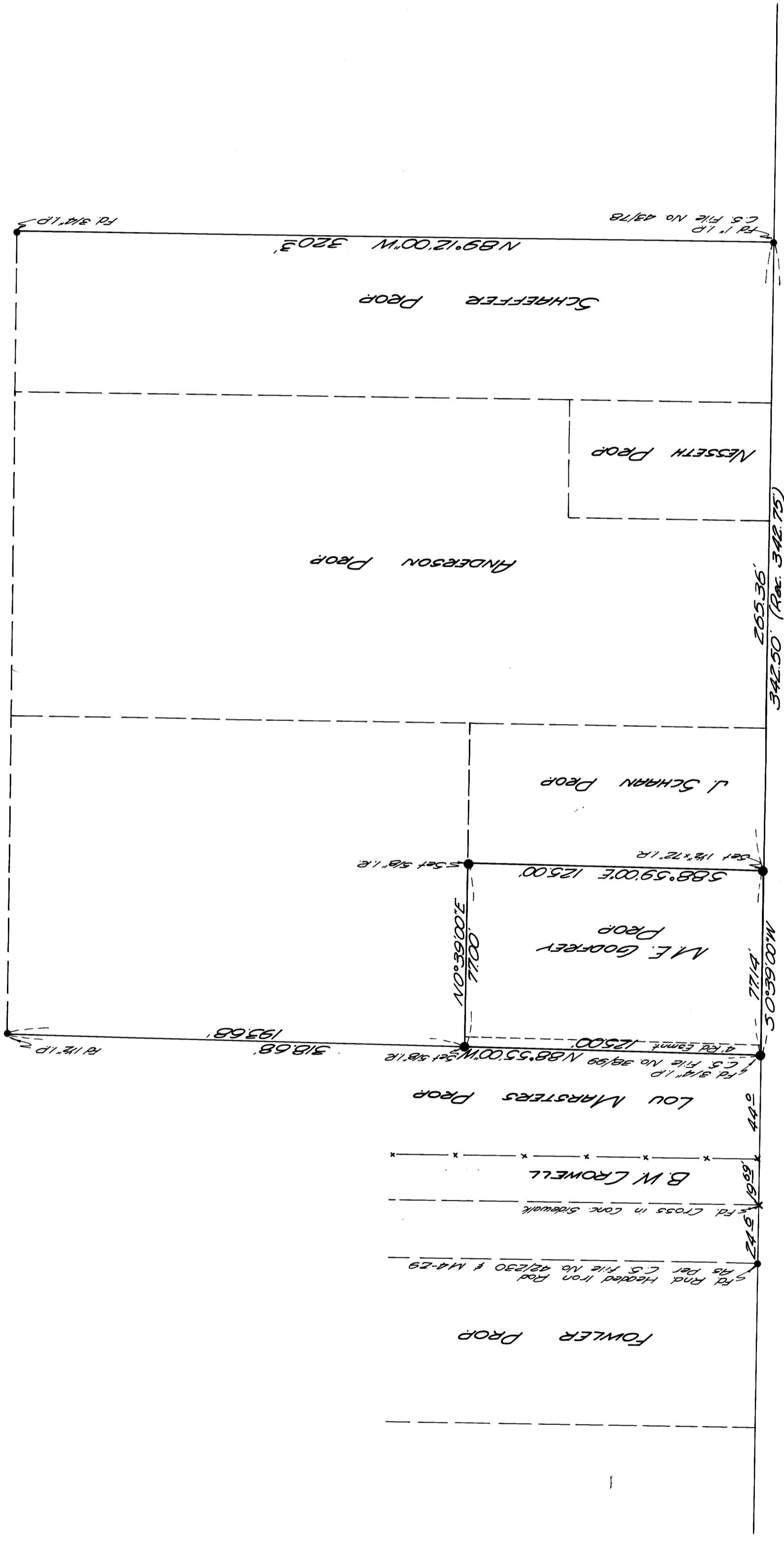


COUNTY SURVEYORS FILE DATA  
DO NOT REMOVE FROM OFFICE

SURVEY TO LOCATE PROP CORNERS  
IN SEC 13 T27S R6W WM  
BY MILO E. GODFREY  
APRIL 16, 1966 SCALE 1"=50'  
BEARINGS BASED ON E OF UMPQUA ST C.S. FILE M17-11  
50°39'00"W

REGISTERED  
OREGON  
LAND SURVEYOR  
Milo E. Godfrey  
MAY 13, 1960  
MILO E. GODFREY  
496

FILED  
RECEIVED  
APR 25 1966  
COUNTY CLERK, CLATSOP  
DOUGLAS COUNTY, ORE.



UMPQUA

50°39'00"W  
Bearing based on Survey by  
E. Lockholder C.S. File M17-11

57

W PRINCETON ST

