

COUNTY SURVEYORS FILE DATA
DO NOT REMOVE FROM OFFICE

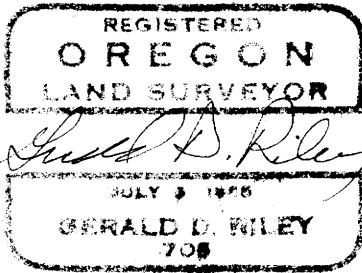
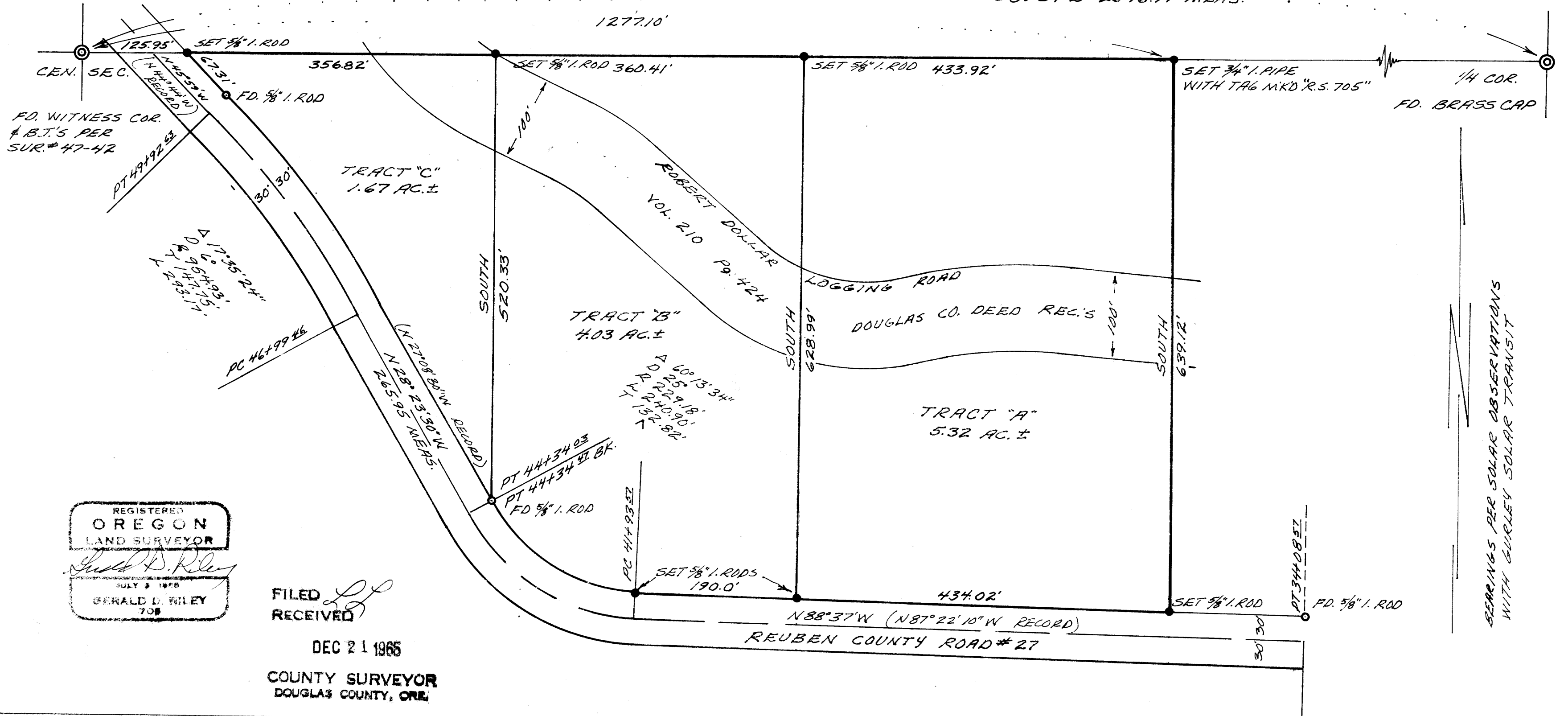
SURVEY OF A PORTION OF THE N.W. 1/4, S.E. 1/4, OF SEC. 32, T.32 S., R.6W., W.M., DOUGLAS CO. OREGON

DEC. 14, 1965

SCALE: 1"=100'

FOR: FAYDREX INC.
1054 SOUTH RIVERSIDE AVE.
MEDFORD, OREGON

S 89° 12' 30" E 2652.98' RECORD (SUR. #47-42)
S 89° 57' E 2646.94' MEAS.



FILED RECEIVED

DEC 21 1965

COUNTY SURVEYOR
DOUGLAS COUNTY, ORE.

MAP FILE M 31 7 4

MAP FILE M 31 7 4