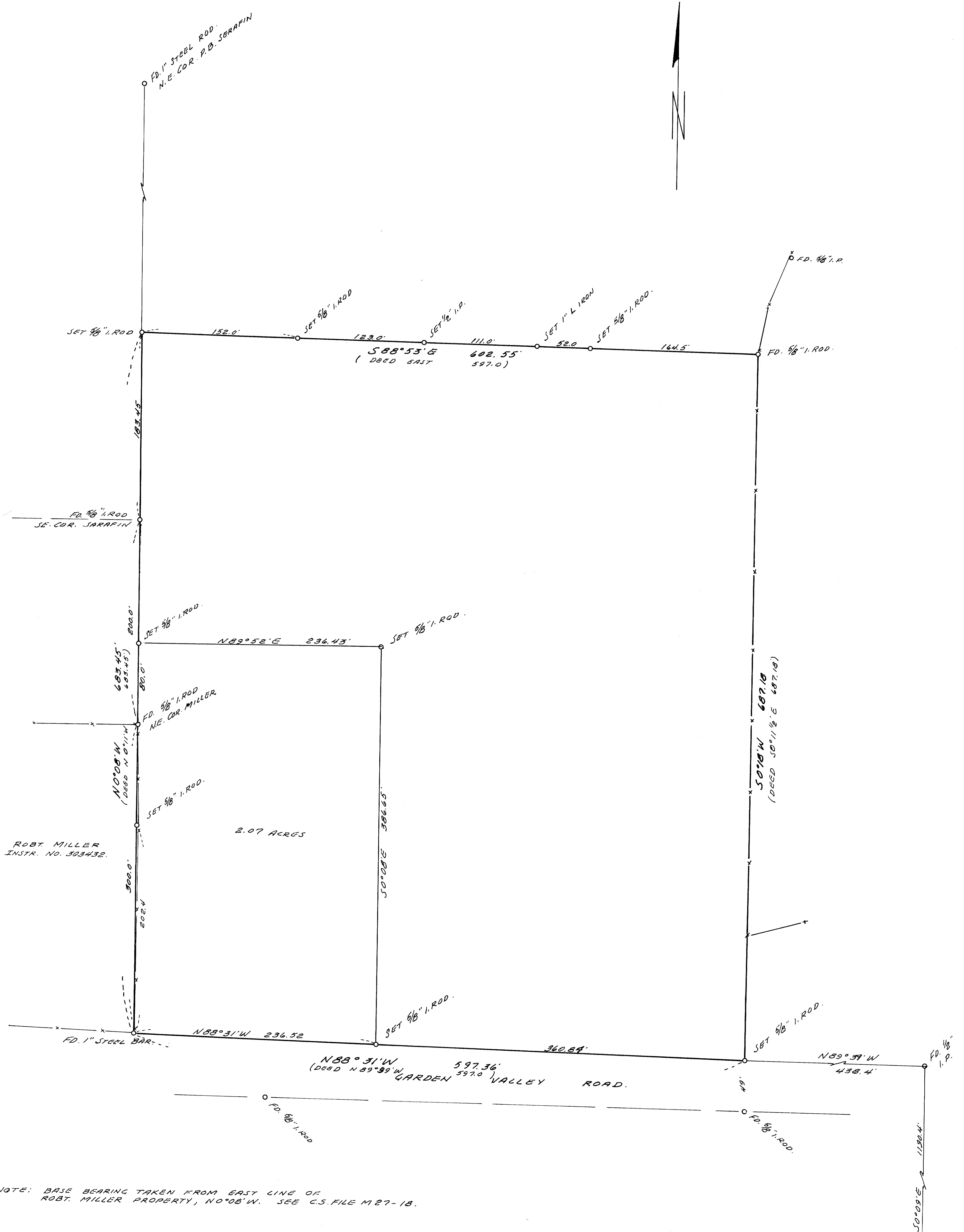


COUNTY SURVEYORS FILE DATA  
DO NOT REMOVE FROM OFFICE

SURVEY TO SET PROPERTY CORNERS  
IN LOTS 5 & 6, PLATE E, ROSEBURG HOME ORCHARD TRACKS  
SEC. 28, T. 26 S., R. 6 W.

SURVEYED FOR - GORDON SMITH  
SURVEYED BY - W. S. BARNES

APRIL 1966  
SCALE 1" = 60'

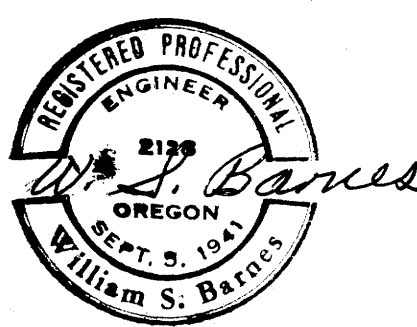


NOTE: BASE BEARING TAKEN FROM EAST LINE OF  
ROBT. MILLER PROPERTY, N0°08'W. SEE C.S. FILE M 27-18.

FILED  
RECEIVED

APR 13 1966

COUNTY SURVEYOR  
DOUGLAS COUNTY, ORE.



S.E. COR. LOT 6  
PLATE E, ROSEBURG HOME ORCHARDS  
TRACKS