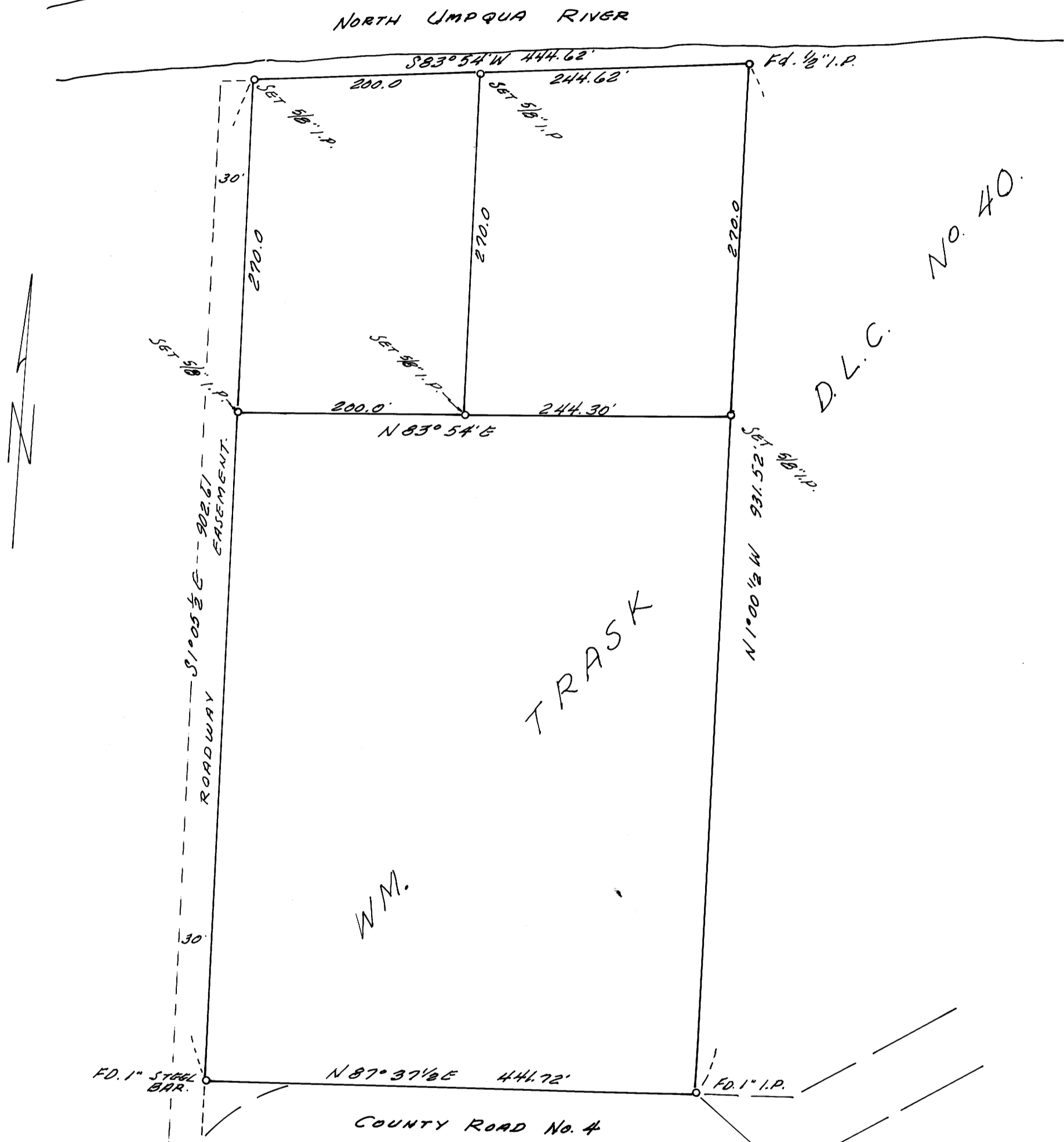


COUNTY SURVEYORS FILE DATA
DO NOT REMOVE FROM OFFICE

SURVEY FOR DEED DESCRIPTION IN D.L.C. No. 40 SEC. 14, T. 26 S., R. 4 W. DOUGLAS COUNTY, OREGON.

SURVEYED FOR - ROBT. H. FRANKS
SURVEYED BY - W.S. BARNES

MAR. 1966
SCALE 1"=100'



NOTE: BASE BEARING $N1^{\circ}00'42''W$ TAKEN
FROM EAST LINE OF SURVEY -
SEE C.S. FILE 44/79



FILED
RECEIVED

MAR 18 1966

COUNTY SURVEYOR
DOUGLAS COUNTY, ORE.

14 13
23 24
T. 26 S., R. 4 W.