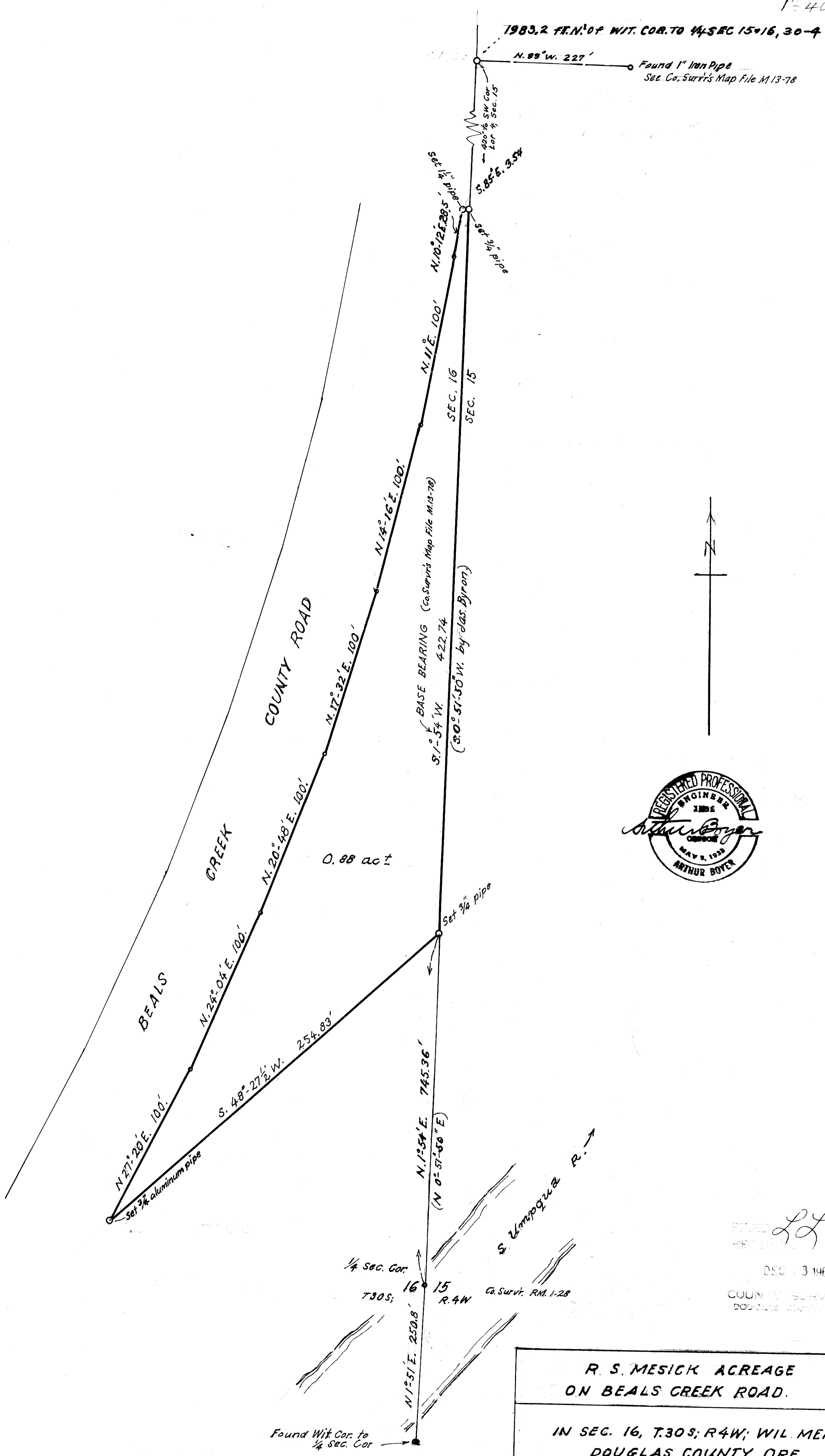


1" = 40'



FILED *LL*

DEC 13 1965

COUNTY SURVEYOR
DOUGLAS COUNTY, ORE.

R. S. MESICK ACREAGE
ON BEALS CREEK ROAD.

IN SEC. 16, T.30S; R.4W; WIL MER
DOUGLAS COUNTY, ORE.

NOV. 1965

1" = 40 ft.

COUNTY SURVEYORS FILE DATA
DO NOT REMOVE FROM OFFICE