

FILE

MAP FILE M. 31-7-29

SURVEY FOR DEED DESCRIPTION

SE 1/4 NW 1/4 SECT. 13, T. 22 S., R. 6 W. W.M.

Thos E. Plumb

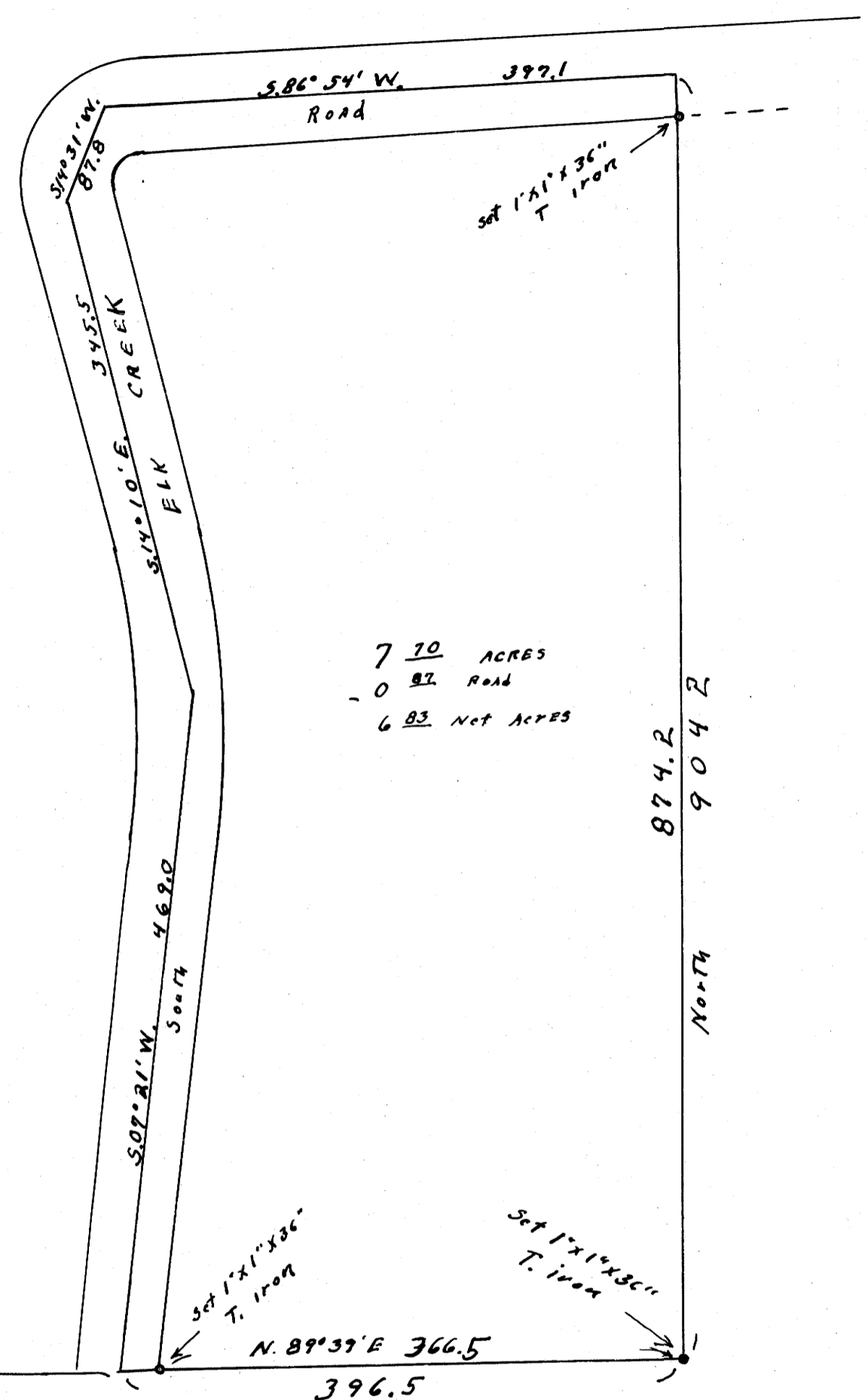
Drain, Oreg.

Scale: 1" = 100'

March 7, 1966

REGISTERED
OREGON
LAND SURVEYOR
Wilford N. Haines

MAY 7, 1948
WILFORD N. HAINES
239



7 ⁷⁰ ACRES
0 ⁸² ROAD
6 ⁸³ NET ACRES

874.2
904.2
North

S. 89° 39' W. 1307.0
 234.1
 S. 09° 21' W. 469.0
 N. 89° 39' E. 396.5
 396.5
 397.1
 S. 86° 54' W. Road
 S. 49° 10' E. CREEK
 Elk
 S. 49° 21' W. 87.8
 1/4 corner sects 13+14, T. 22 S., R. 6 W. W.M.
 1/4 iron pipe N.W. corner Lot 5, Sect. 13 T. 22 S., R. 6 W. W.M.

FILED
RECEIVED
MAR 15 1966

COUNTY SURVEYOR
DOUGLAS COUNTY, ORE.

M. 31-29