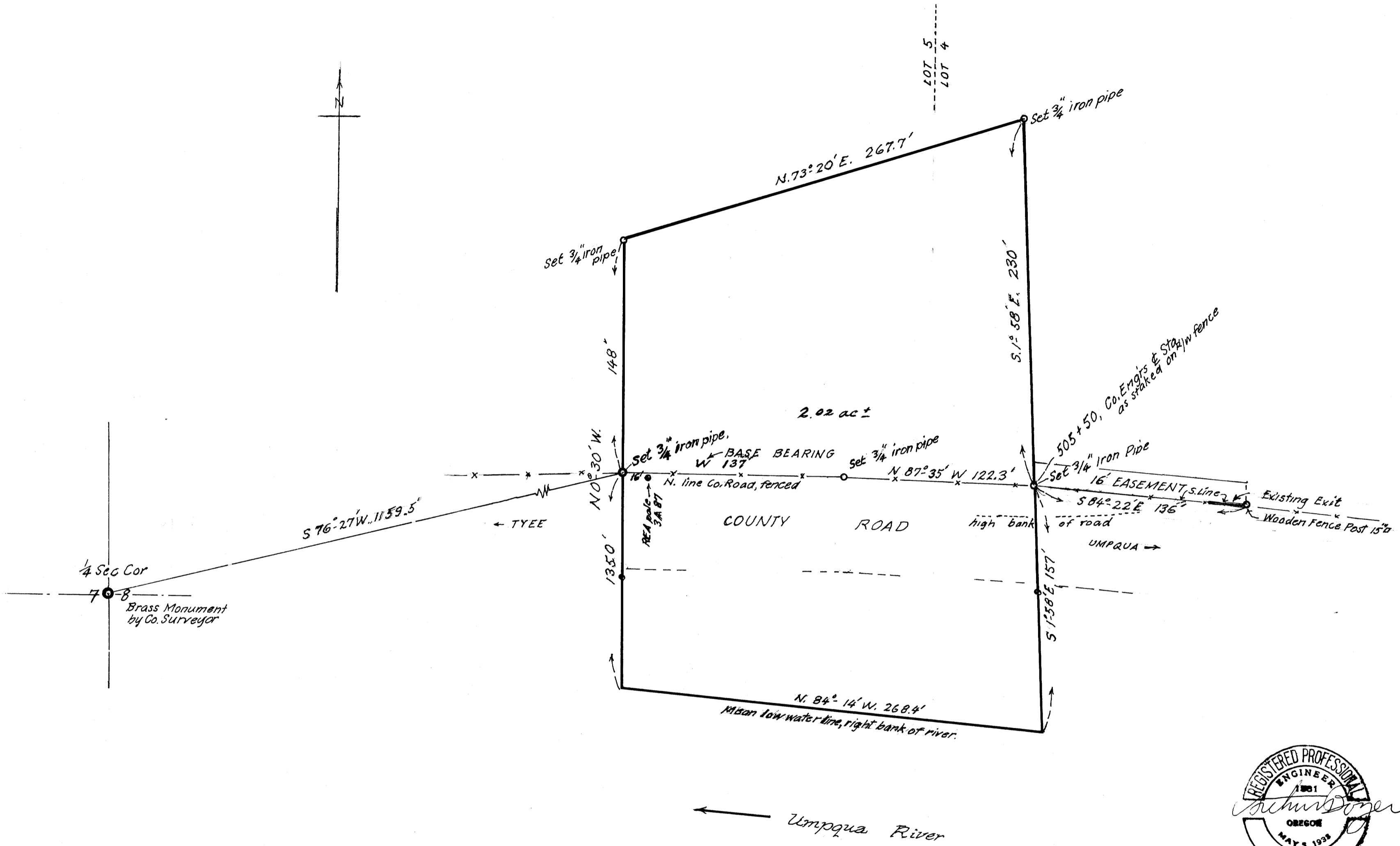


M311.2



FILED  
 RECEIVED  
 DEC 9 1965  
 COUNTY SURVEYOR  
 DOUGLAS COUNTY, ORE.

ORVILLE JOHNSTONE UMPQUA, OREGON.	
PORTION OF RANGH WHICH IS IN W 1/2 SEC. 8, T25S; R.7W; W.M.; DOUGLAS COUNTY, ORE.	
DEC. 1965	1" = 50 FT.

COUNTY SURVEYORS FILE DATA  
DO NOT REMOVE FROM OFFICE

M311.2