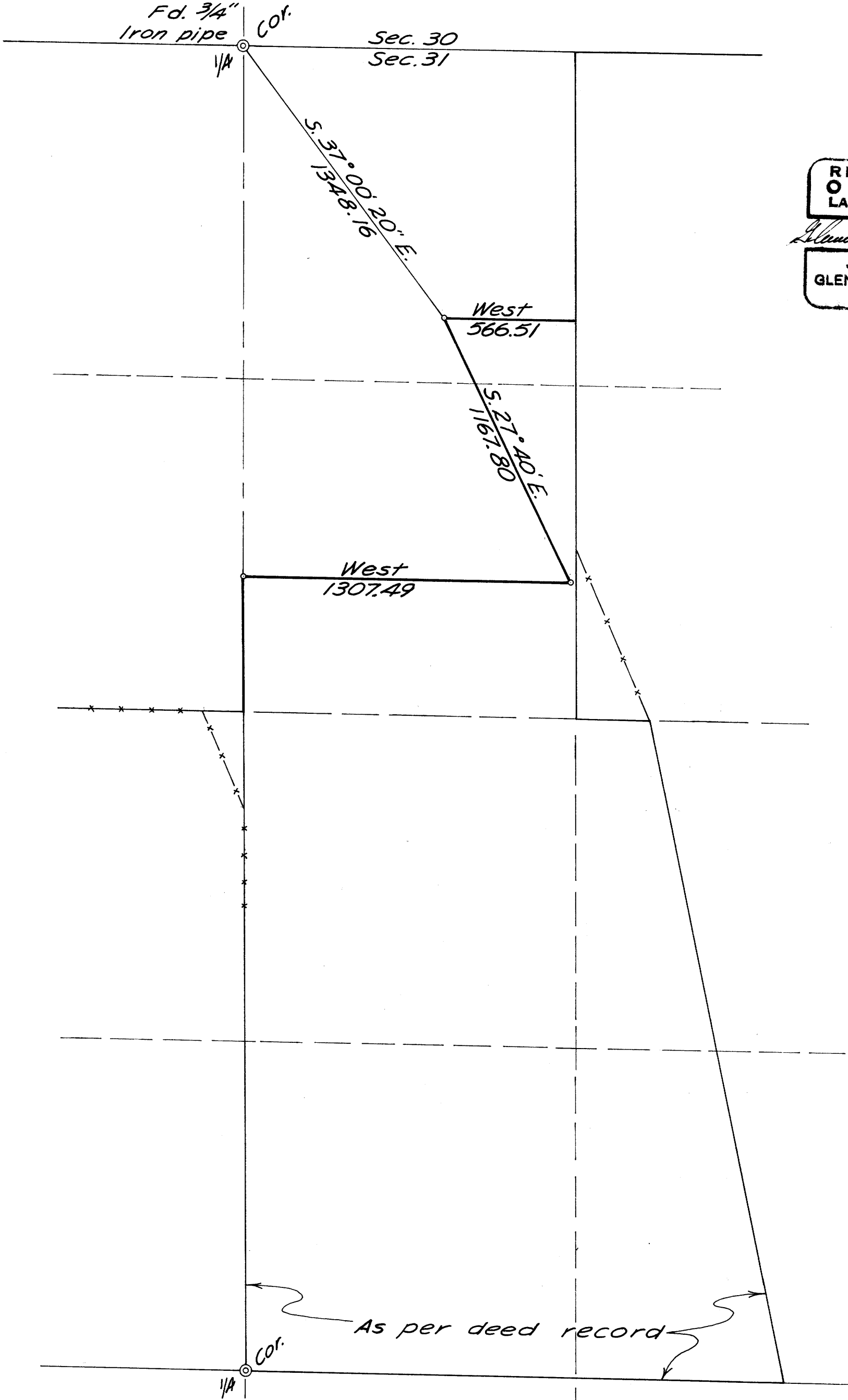


SURVEY TO ESTABLISH A DIVISION LINE SEC. 31, T. 27 S., R. 5 W. W.M.

SURVEYED FOR WINTER REAL ESTATE
SURVEYED BY BAUGHMAN SURVEYING SERVICE
SCALE: 1" = 400' ° DENOTES 1/2" IRON RODS SET FEB., 1966

COUNTY SURVEYORS FILE THIS
DO NOT REMOVE FROM FILE



REGISTERED
OREGON
LAND SURVEYOR

Glenn S. Baughman

JULY 14, 1961
GLENN S. BAUGHMAN
536

Bearings based on a solar observation



FILED *LL*
RECEIVED

FEB 21 1966

COUNTY SURVEYOR
DOUGLAS COUNTY, ORE.