

COUNTY SURVEYORS FILE DA
DO NOT REMOVE FROM OFFICE

SURVEY FOR DEED DESCRIPTION
SECTION 22, T.27S, R.6W.W.M.
FOR GEORGE & LILLIE ORSER
BY BAUGHMAN SURVEYING SERVICE
Feb. 17, 1966 **Scale 1"=100'**

FILED *LL*
RECEIVED

FEB 21 1966

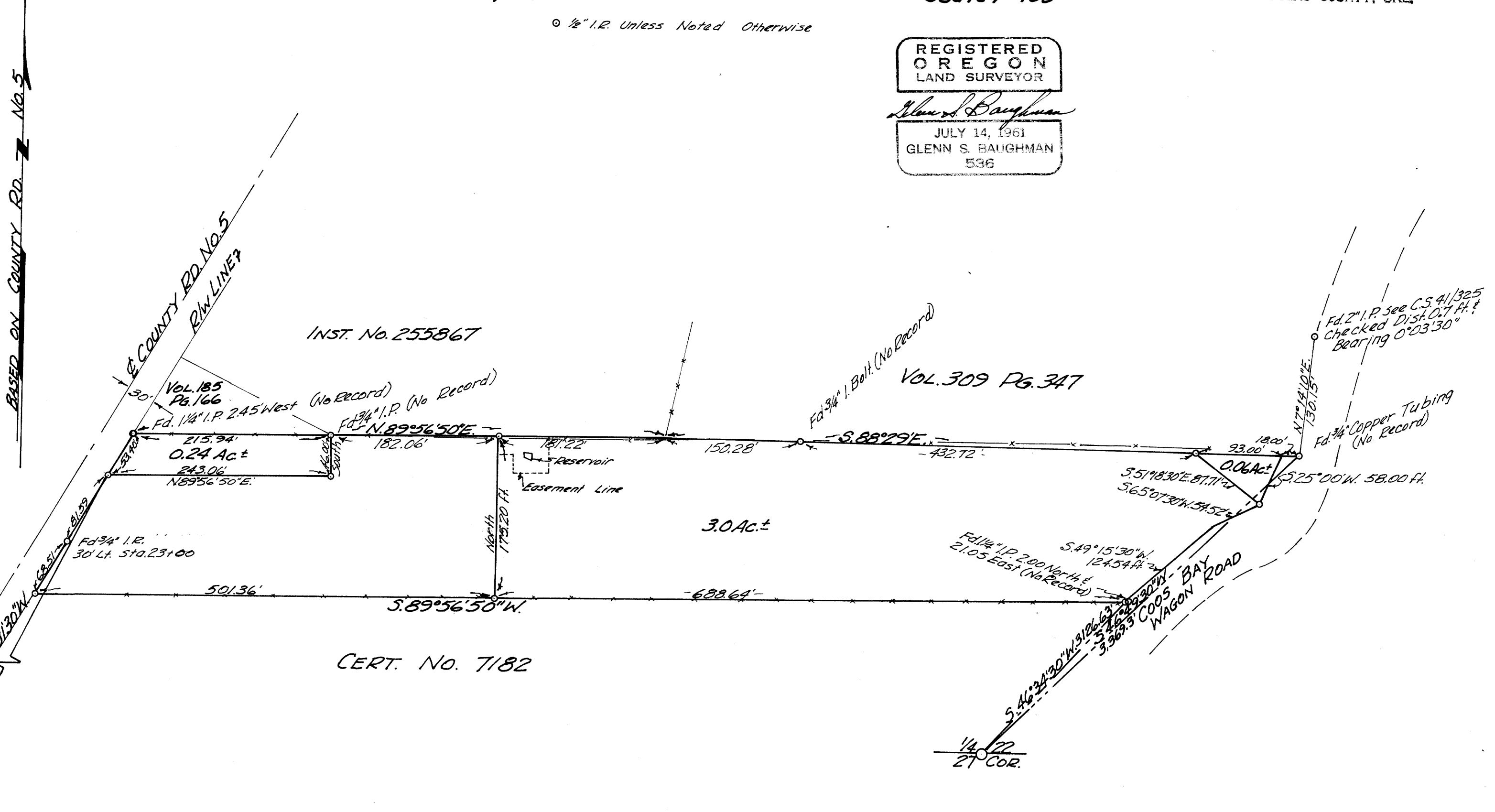
COUNTY SURVEYOR
DOUGLAS COUNTY, ORE.

o 1/2" I.R. Unless Noted Otherwise

REGISTERED
OREGON
LAND SURVEYOR

Glenn S. Baughman

JULY 14, 1961
GLENN S. BAUGHMAN
536



MAP FILE M31-17