

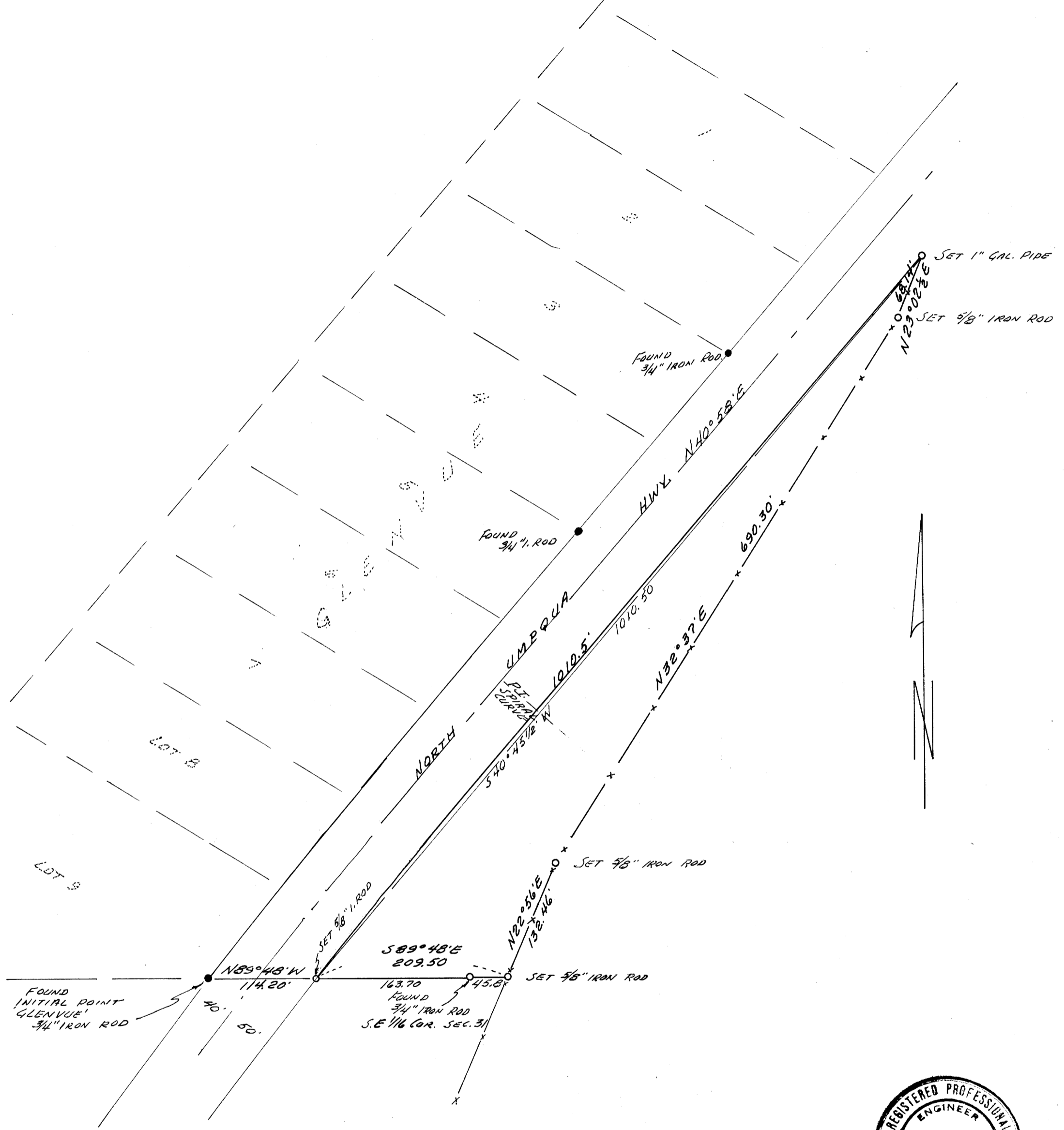
M 31-15 W

COUNTY SURVEYORS FILE BAY  
DO NOT REMOVE FROM OFFICE

# SURVEY FOR DEED DESCRIPTION IN SEC. 31, T 26 S, R 4 W, W. M. .

SURVEYED FOR - STEVE FENNEL  
SURVEYED BY - W.S. BARNES

JAN. 1966  
SCALE 1"=100'



NOTE: BASE BEARING TAKEN FROM  
SOUTH LINE 'GLENVUE' - S89°48'E.

FILED *LL*  
RECEIVED

FEB 4 1966

COUNTY SURVEYOR  
DOUGLAS COUNTY, ORE.

MAP FILE M 31-15