

FILED *LL*  
RECEIVED

JAN 25 1966

COUNTY SURVEYOR  
DOUGLAS COUNTY, ORE.

# SURVEY FOR PROPERTY DESCRIPTION

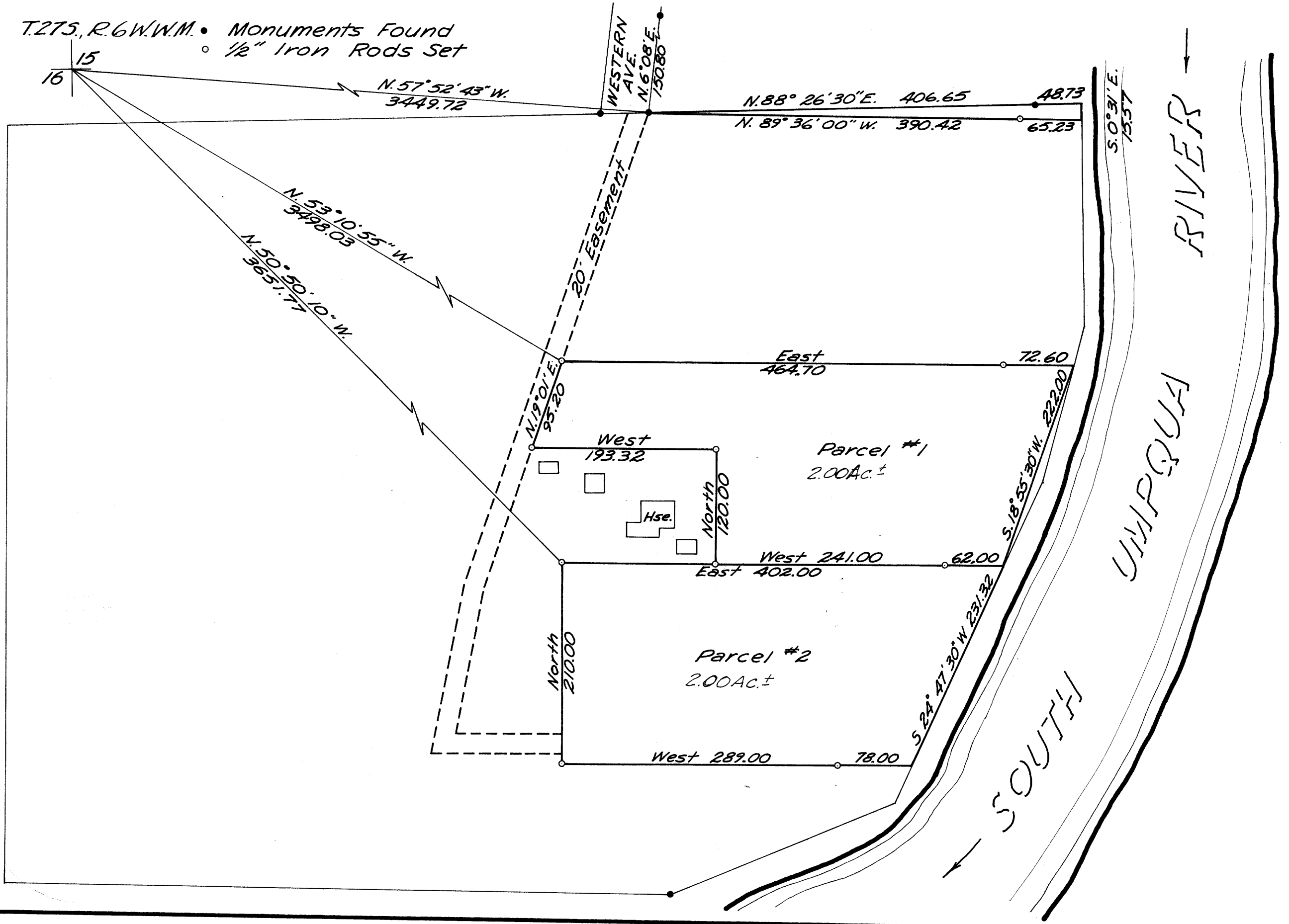
SURVEYED FOR BERT YOUNG  
SURVEYED BY BAUGHMAN SURVEYING SERVICE  
SCALE: 1" = 100' JAN., 1966

COUNTY SURVEYORS FILE DATE  
DO NOT REMOVE FROM OFFICE

FILE M 31 7 13

T.27S., R.6W.W.M. • Monuments Found  
• 1/2" Iron Rods Set

Base of Bearings  
C. S. File No. 46-136



REGISTERED  
OREGON  
LAND SURVEYOR

*Glenn G. Baughman*

JULY 24, 1961  
GLENN G. BAUGHMAN  
536

M 31-13