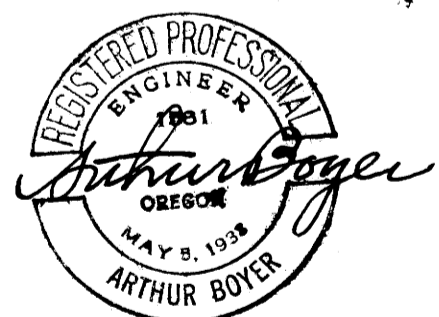
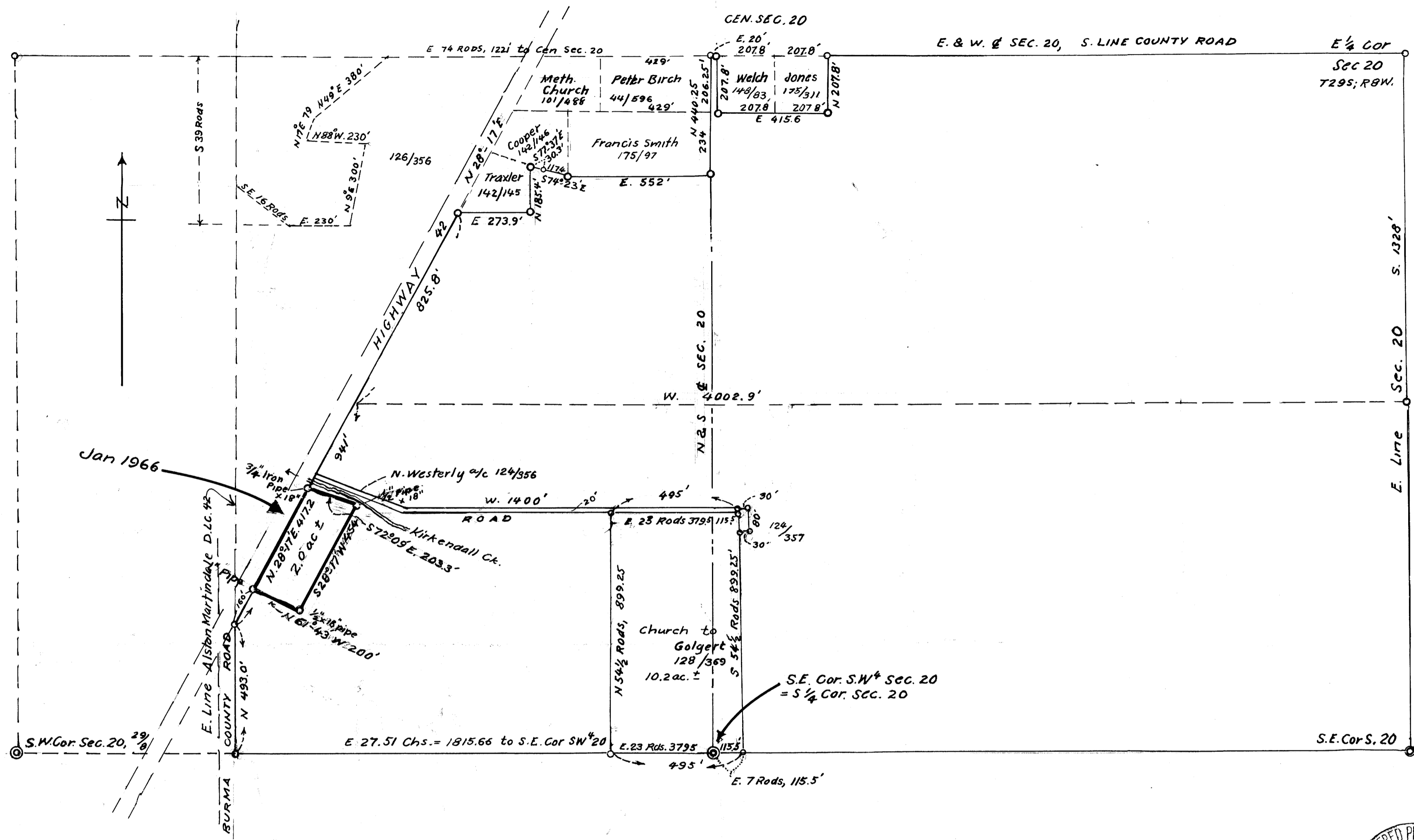


M 31-11



COUNTY SURVEYORS FILE DATA  
DO NOT REMOVE FROM OFFICE

GOLGERT RANCH  
CAMAS VALLEY ORE.  
ACREAGE IN SEC. 20, T.29S; R.8W; WM.  
DOUGLAS COUNTY  
Feb. 1963 - Jan. 1966. 1" = 300'

FILED RECEIVED  
JAN 21 1966  
COUNTY SURVEYOR  
DOUGLAS COUNTY, ORE.

M 31-11