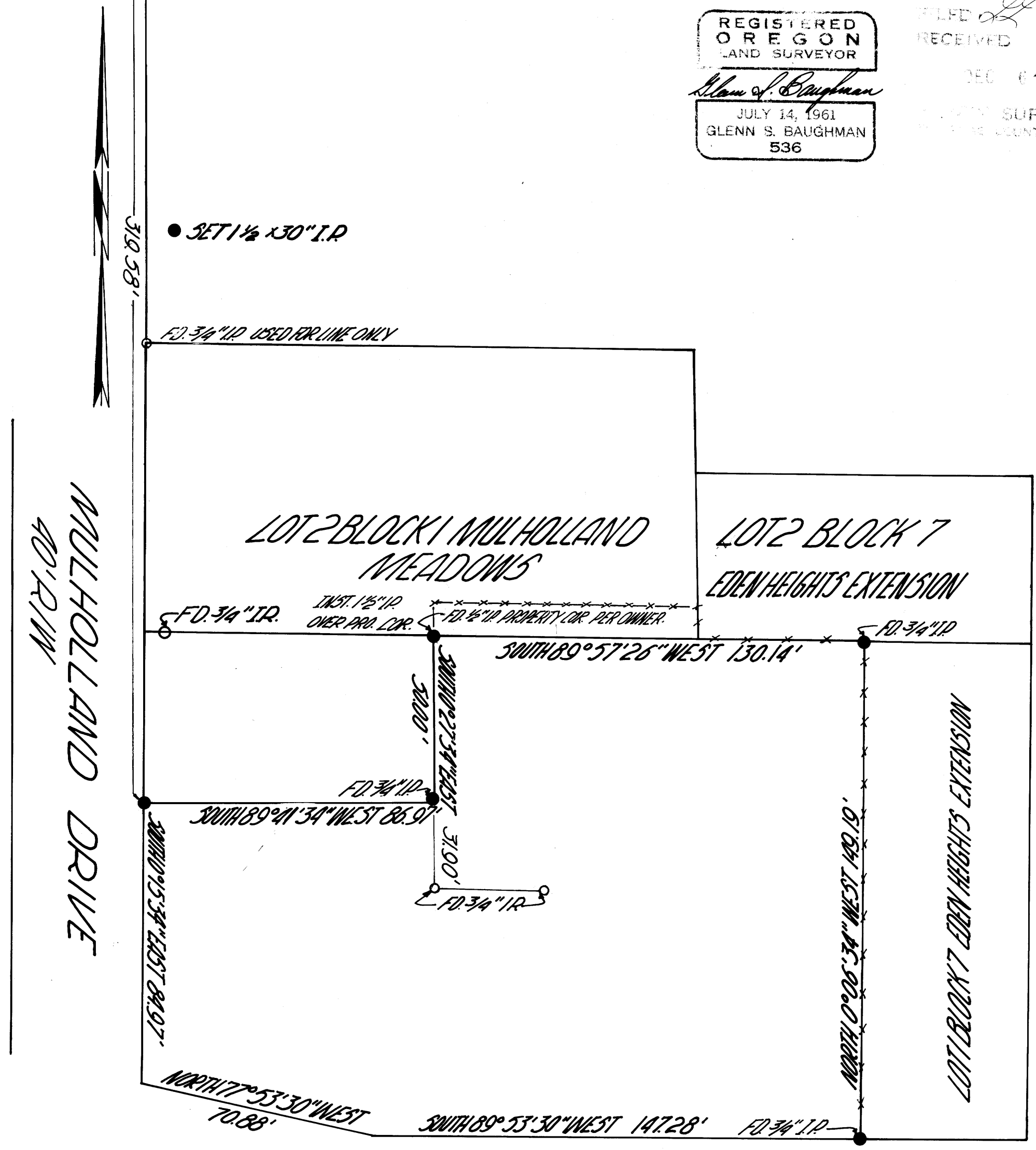


FD 1 1/2" I.P. USED AS SIGHT

**SURVEYED FOR PROPERTY DESCRIPTION
FOR DON REED**
NORTH EAST 1/4 NORTHWEST 1/4 SECTION 13
TOWNSHIP 27 SOUTH RANGE 6 WEST
 SURVEYED BY **GLENN S. BAUGHMAN** SCALE 1"=30'
 11-10-65 • 1 1/2" IRON PIPE

REGISTERED
OREGON
 LAND SURVEYOR
Glenn S. Baughman
 JULY 14, 1961
 GLENN S. BAUGHMAN
 536

FILED *[Signature]*
 RECEIVED
 DEC 6 1965
 COUNTY SURVEYOR
 CLATSOP COUNTY, ORE.



COUNTY SURVEYORS FILE DATA
 DO NOT REMOVE FROM OFFICE

GARDEN VALLEY BLVD.
 80' R/W