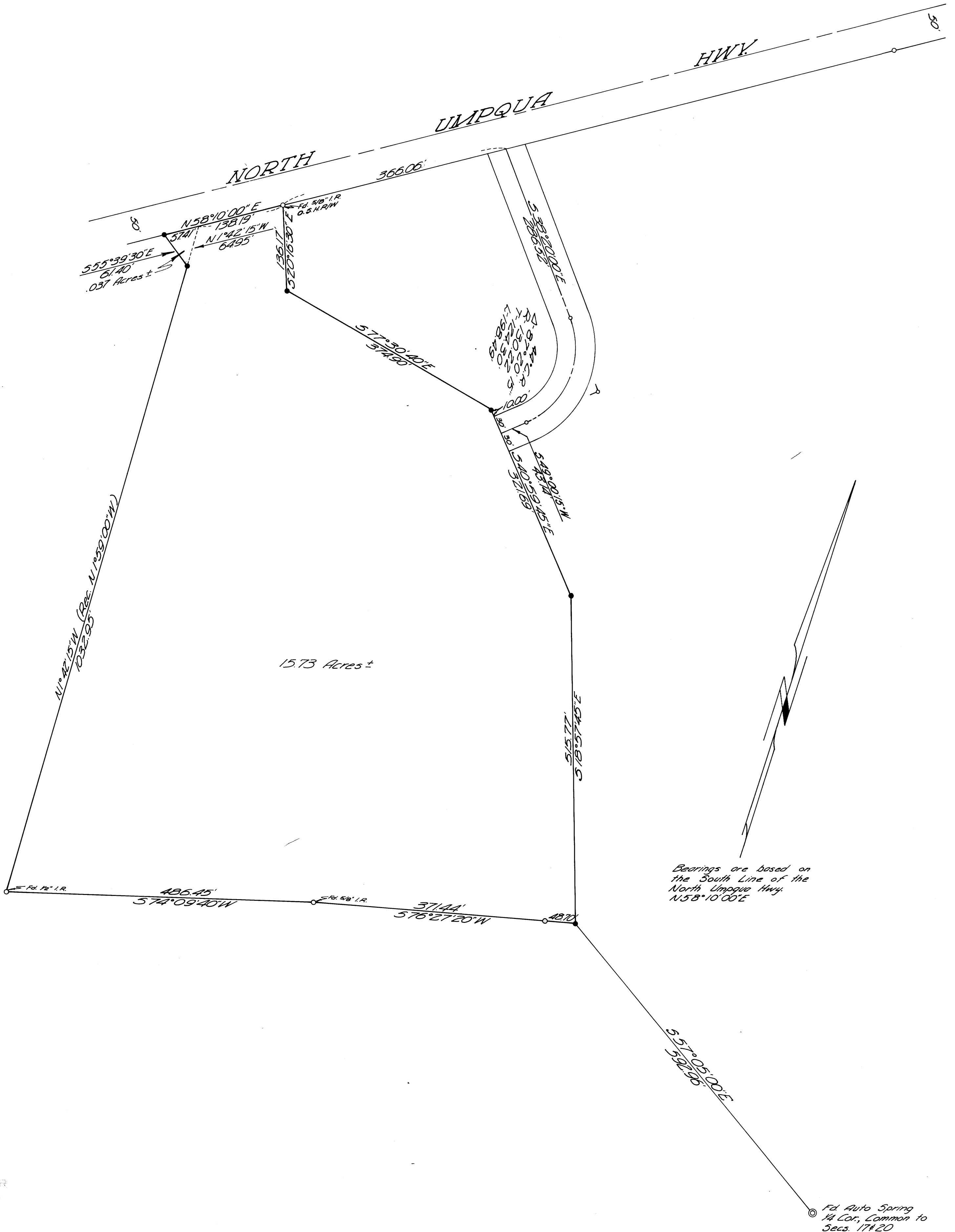


DO NOT REMOVE FROM OFFICE

A SURVEY FOR DEED DESCRIPTION
IN SEC. 17 T.26S. R.3W. W.M.
SURVEYED FOR DANIEL ABEL
SURVEYED BY DON GARRETT
NOVEMBER 18, 1965 SCALE 1"=100'

•SET 5/8" IRON ROD

REGISTERED
OREGON
LAND SURVEYOR
DON E. GARRETT
JULY 14, 1961
DON E. GARRETT
544



APPROVED
COUNTY CLERK

Pd Auto Spring
1/4 Cor., Common to
Secs. 17 & 20