

COUNTY SURVEYORS FILE DATA
DO NOT REMOVE FROM OFFICE

SURVEY FOR DEED DESCRIPTION

Edw. Griffin D.L.C. # 42 IN Sect. 23
T 22 S., R. 8 W., W.M.

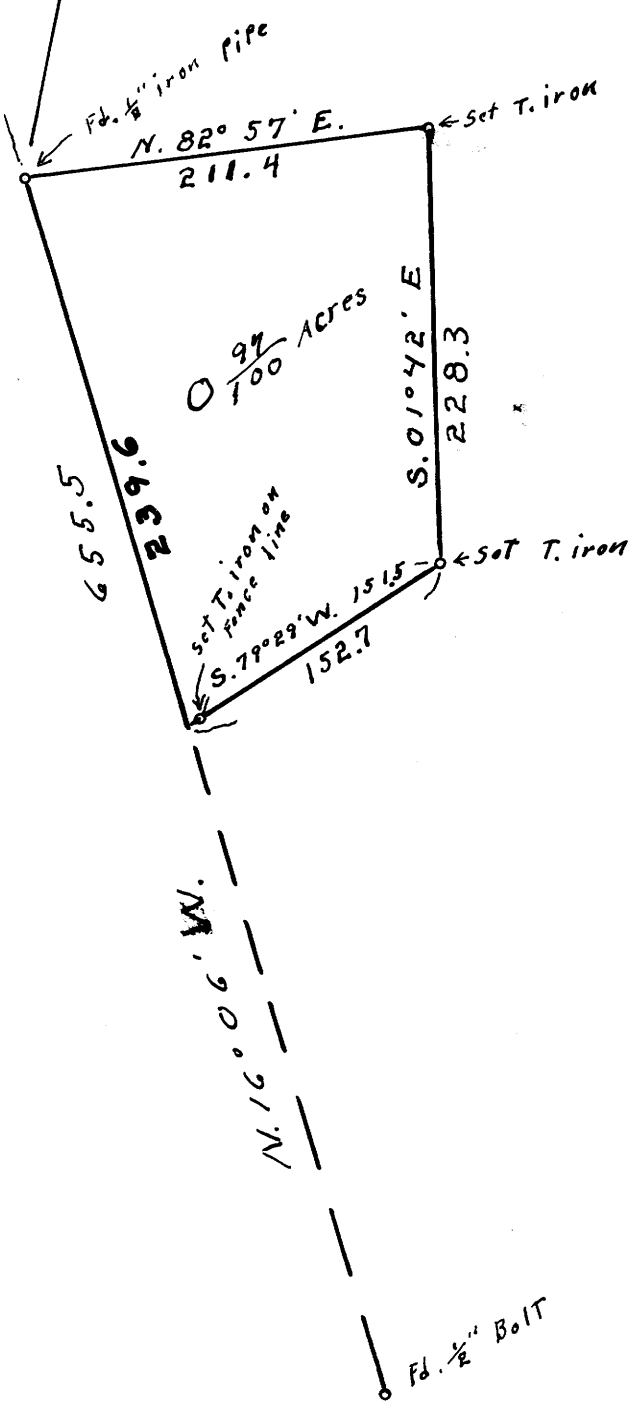
for

UNA O. Smith

EIKTON, Oregon

Scale: 1" = 100'

Nov. 29, 1965



REGISTERED
OREGON
LAND SURVEYOR

Wilford N. Haines

MAY 7, 1948
WILFORD N. HAINES
239

FILED *LH*
RECEIVED

NOV 30 1965

COUNTY SURVEYOR
DOUGLAS COUNTY, ORE.