

COUNTY SURVEYORS FILE DATE
NOT REMOVE FROM OFFICE

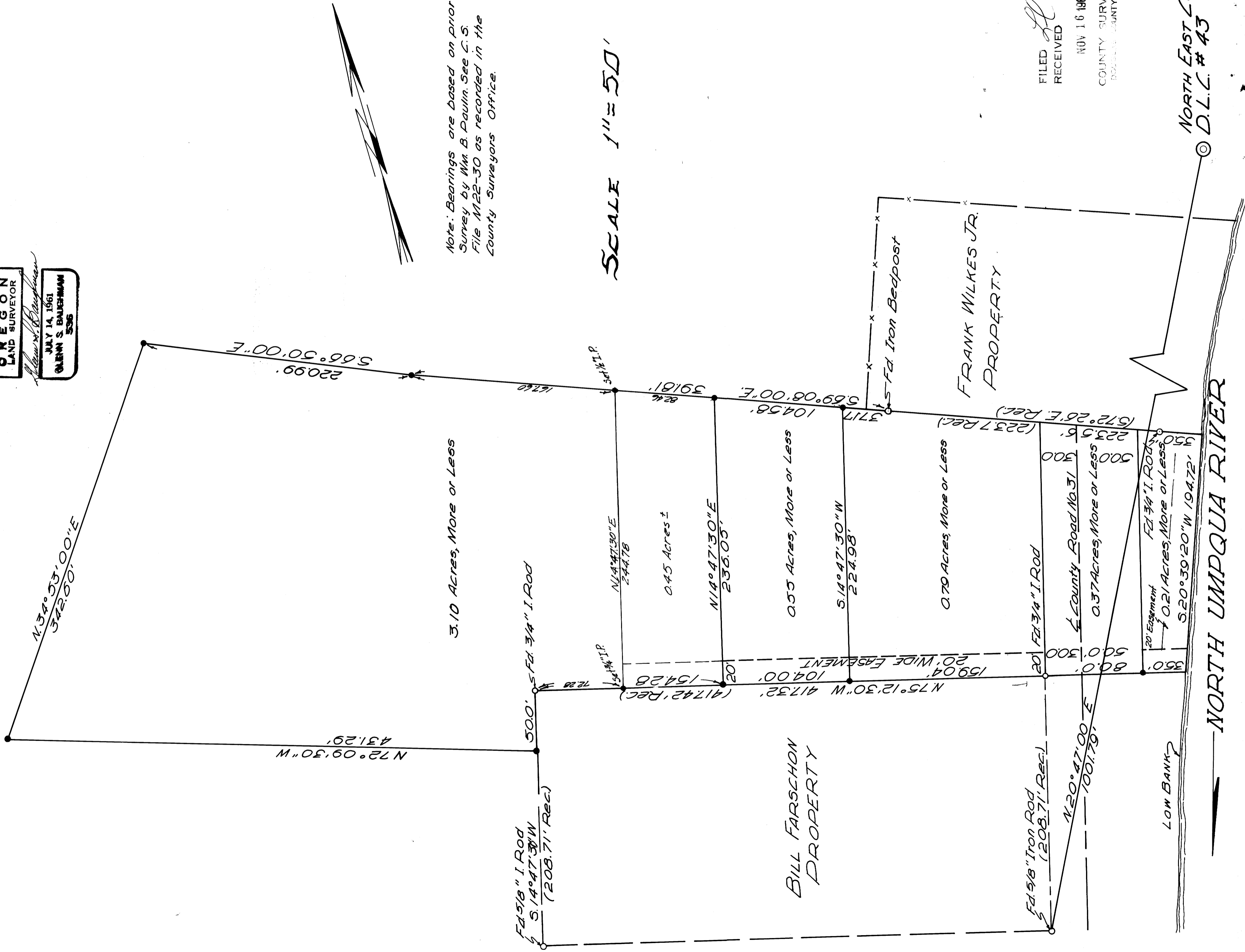
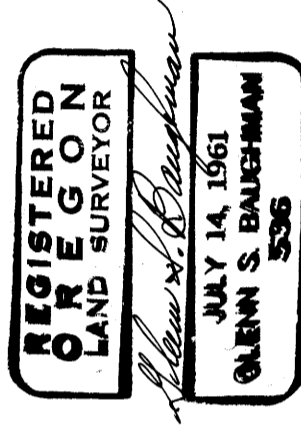
SURVEY FOR DEED DESCRIPTION D.L.C. No. 43 SEC. 22 T. 26 S. R. 6 W. W. M.

SURVEYED FOR LYLE MILLER JULY 18, 1964

GLENN S. BAUGHMAN SURVEYOR

• SET 3/4" IRON ROD

Amended Nov. 1965



Note: Bearings are based on prior Survey by Wm. B. Daulton. See C.S. File M22-30 as recorded in the County Surveyors Office.

SCALE 1" = 50'

FILED
RECEIVED
NOV 16 1965
COUNTY SURVEYOR
BOVILL COUNTY, ORE.

NORTH EAST CORNER
D.L.C. # 43

NORTH UMPQUA RIVER