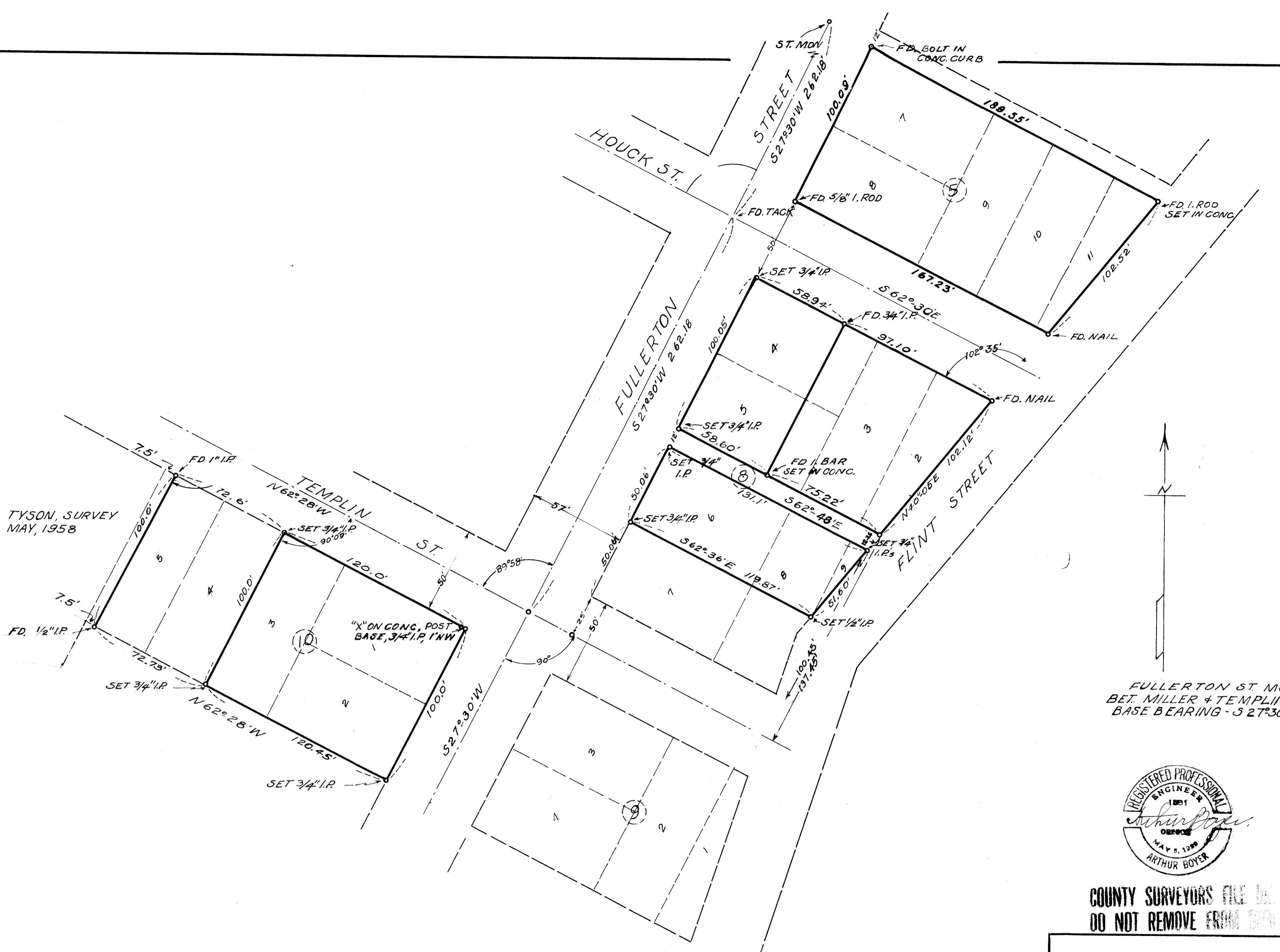


FILE M 30 - 64



TYSON, SURVEY
MAY, 1958

FD. 1/2" I.P.

SET 3/4" I.P.

SET 3/4" I.P.

SET 3/4" I.P.

SET 3/4" I.P.

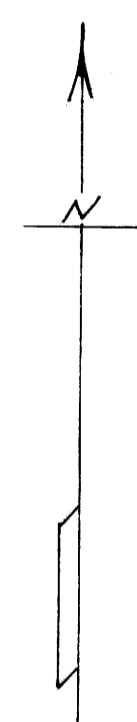
SET 3/4" I.P.

SET 3/4" I.P.

SET 3/4" I.P.

SET 3/4" I.P.

SET 3/4" I.P.



FULLERTON ST. MON'S
BET. MILLER & TEMPLIN ST'S
BASE BEARING - S 27° 30' W



COUNTY SURVEYORS FILE ON
DO NOT REMOVE FROM OFFICE

LUTHER ELLISON
 SURVEY IN BKS. 5, 8, 10
 HAMILTON ADDITION TO CITY OF
 ROSEBURG, ORE
 NOV, 1965 1" = 40'

FILED *LL*
 RECEIVED
 NOV 8 1965
 COUNTY SURVEYOR
 DOUGLAS COUNTY, ORE.

FILE M 30 - 64