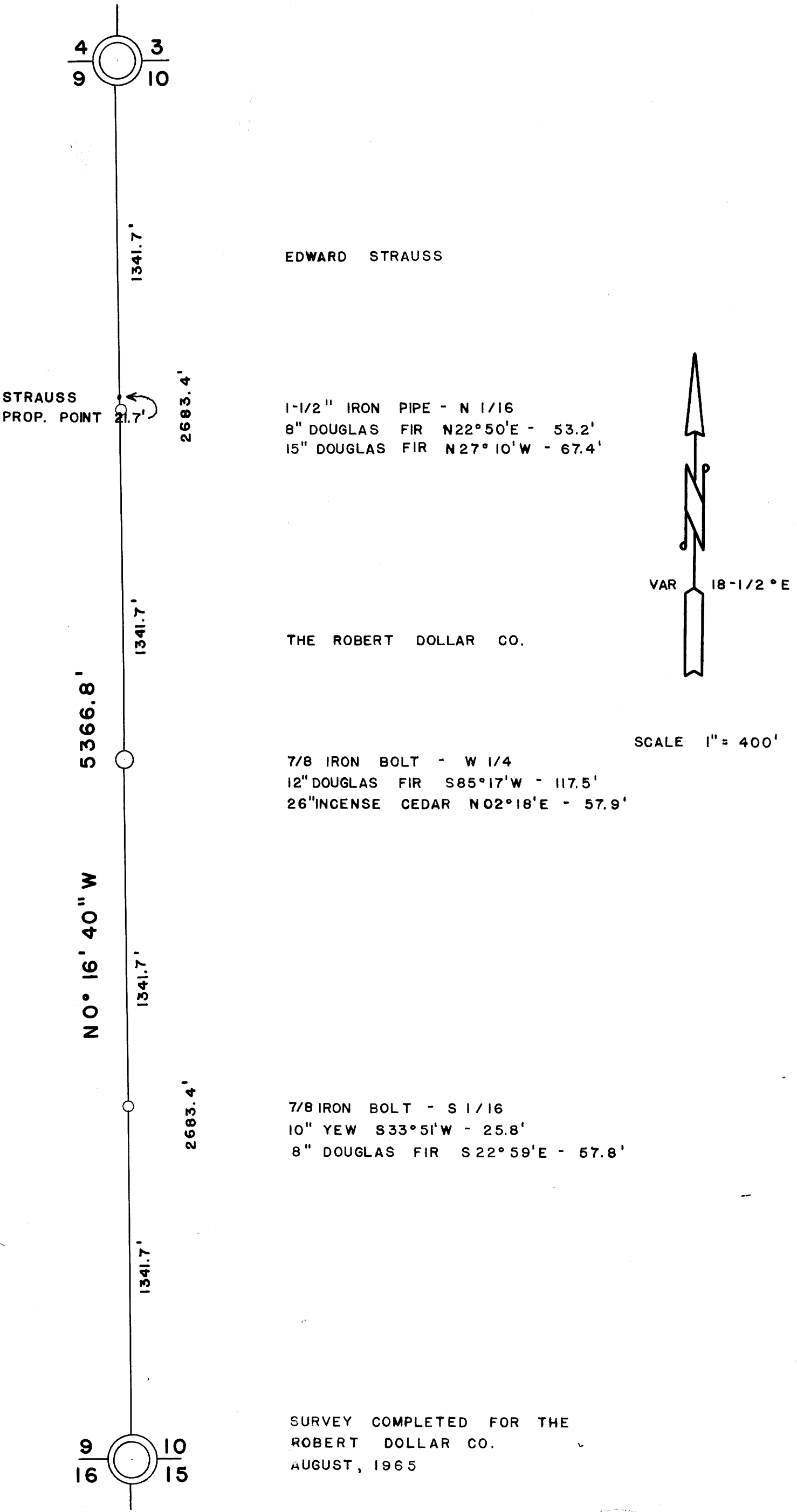


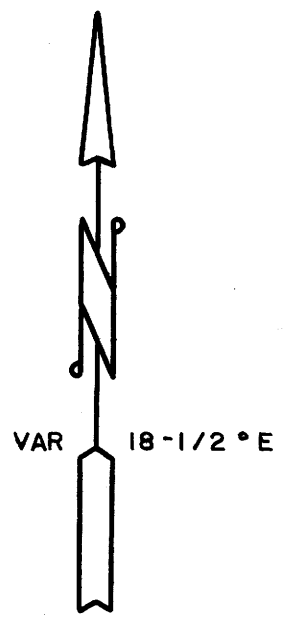
COUNTY SURVEYORS FILE OR
NOT REMOVE FROM OFFICE

SEC. 10 T33S, R6W, W.M.



EDWARD STRAUSS

1-1/2" IRON PIPE - N 1/16
8" DOUGLAS FIR N22°50'E - 53.2'
15" DOUGLAS FIR N27°10'W - 67.4'



THE ROBERT DOLLAR CO.


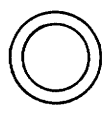
SCALE 1" = 400'

7/8 IRON BOLT - W 1/4
12" DOUGLAS FIR S85°17'W - 117.5'
26" INCENSE CEDAR N02°18'E - 57.9'

7/8 IRON BOLT - S 1/16
10" YEW S33°51'W - 25.8'
8" DOUGLAS FIR S22°59'E - 57.8'

SURVEY COMPLETED FOR THE
ROBERT DOLLAR CO.
AUGUST, 1965



-  CORNER SET AND MONUMENTED
-  CORNER REPORTED PREVIOUSLY

FILED
RECEIVED

SEP 30 1965

COUNTY SURVEYOR
DOUGLAS COUNTY, ORE.