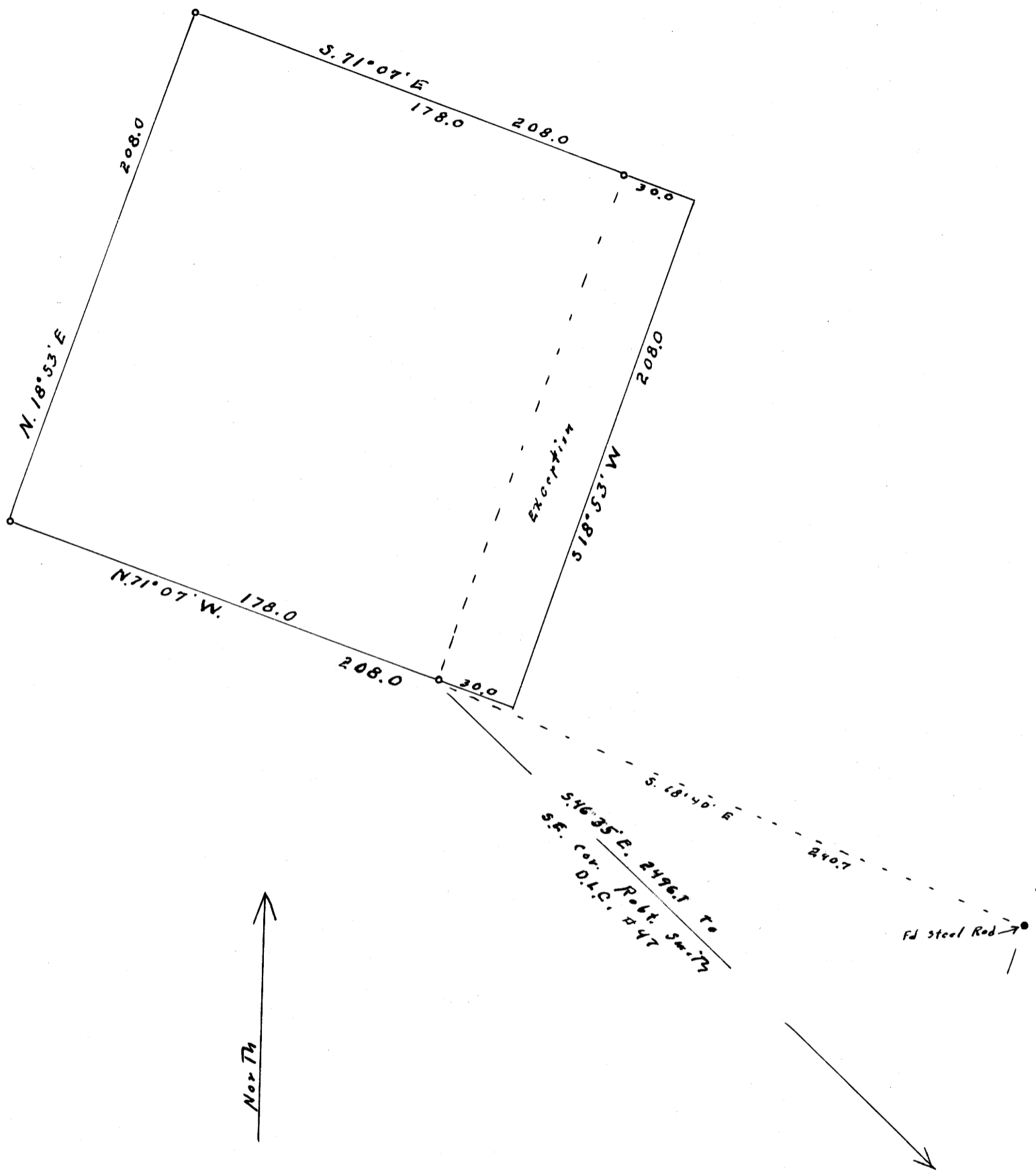


M30-44



North ↑

o set 1"X1"X36" T. iron

COUNTY SURVEYORS FILE OFFICE
DO NOT REMOVE FROM OFFICE

SURVEY FOR DEED DESCRIPTION
Robt. Smith D.L.C. #47 T. 23 S., R. 5 W. W.M.
scale 1" = 50' Sept. 23, 1965

FOR D.M. WEBB
J.W. McDONALD

REGISTERED
OREGON
LAND SURVEYOR

Wilford N. Haines

MAY 7, 1948
WILFORD N. HAINES
239

FILED
RECEIVED

SEP 27 1965

COUNTY SURVEYOR
DOUGLAS COUNTY, ORE.

M30-44