

COUNTY SURVEYORS WILL NOT DO NOT REMOVE FROM OFFICE

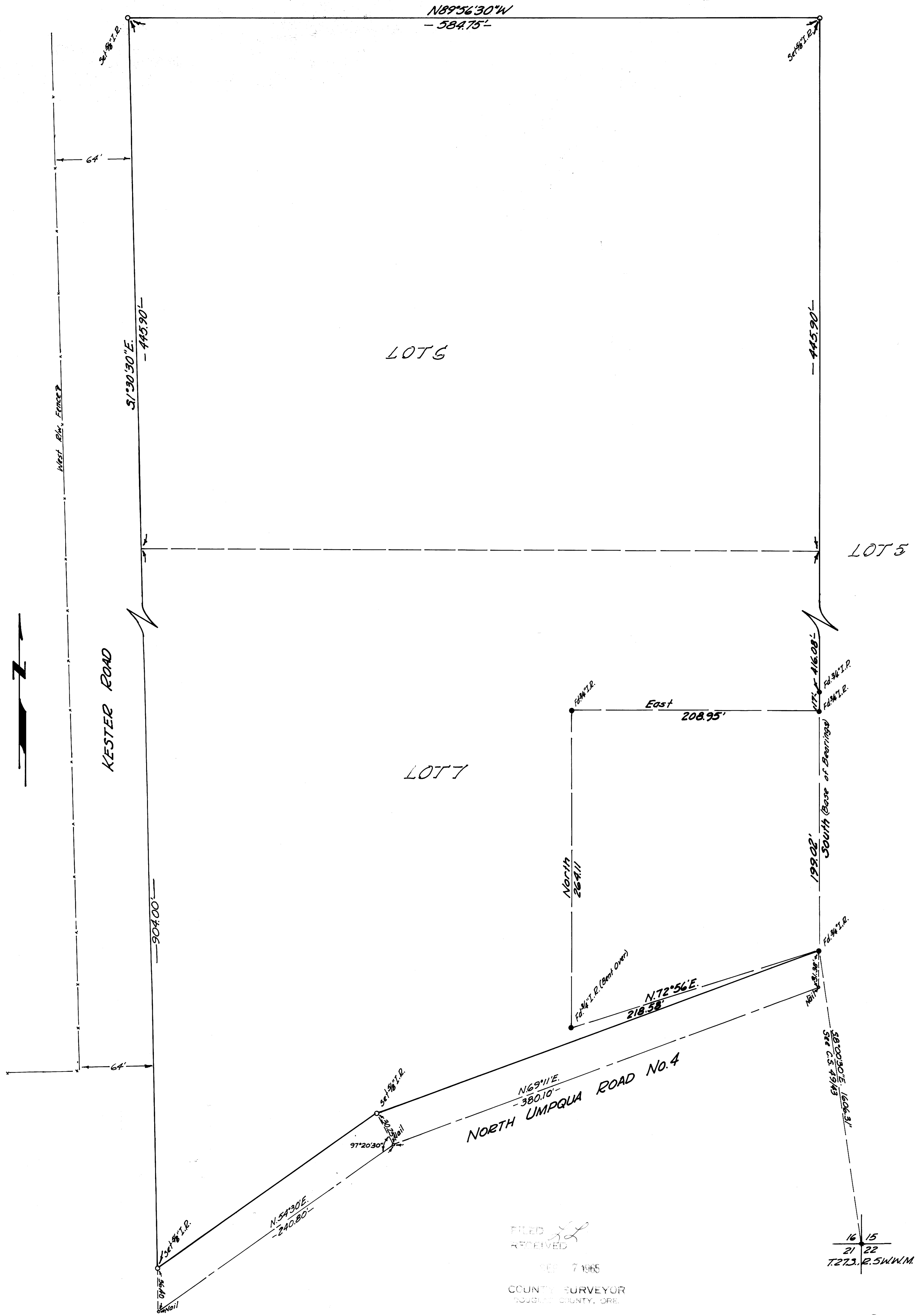
SURVEY FOR PROPERTY CORNERS
LOTS 6 & 7 PLAT 'B' DEER CREEK ORCHARDS
FOR WILLIAM LASSITER
AUGUST, 1965

SCALE 1"=50'

REGISTERED
OREGON
LAND SURVEYOR

Glenn S. Baughman

JULY 14 1965
GLENN S. BAUGHMAN
536



FILED
RECEIVED

SEP 7 1965

COUNTY SURVEYOR
ROUSSEL COUNTY, ORE.

16 15
21 22
T.275, R.5W.W.M.