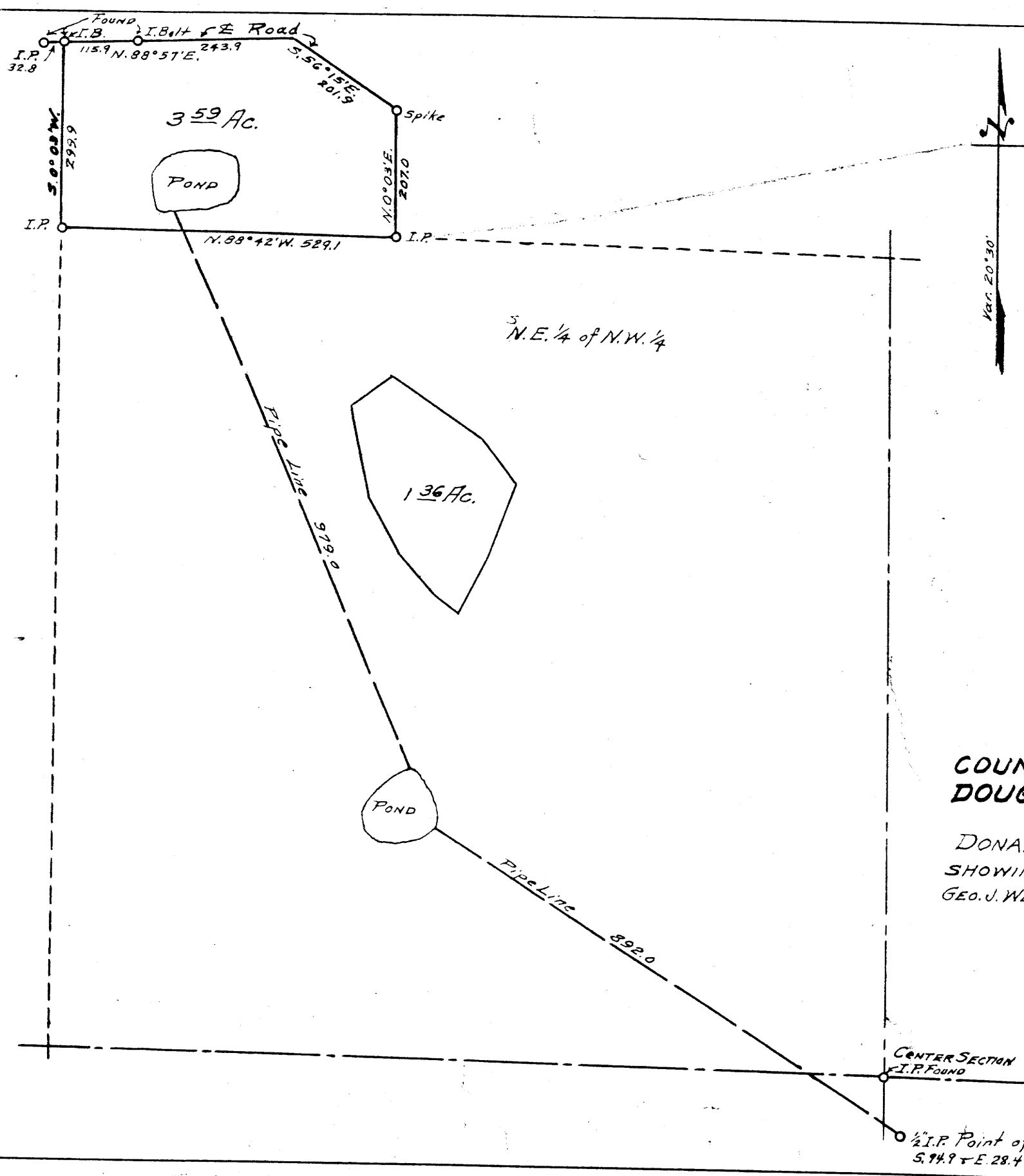


OE - OE Uh



FILED
 RECEIVED
 AUG 13 1965
 COUNTY SURVEYOR
 DOUGLAS COUNTY, ORE.

THIS COPY MADE FROM
 A XEROX 2510
 DATE July 28, 89

COUNTY SURVEYOR'S OFFICE
DOUGLAS COUNTY, OREGON.
 SURVEY FOR
 DONALD W. BRADY, IN SECTION 23, T. 32S., R. 5W. W.M.
 SHOWING 3.59 AC. TRACT & WATER RIGHT APPLICATION.
 GEO. J. WENDEROTH, DEPUTY.
 August 1965
 SCALE 1" = 200ft.

REGISTERED
 OREGON
 LAND SURVEYOR
Geo. J. Wenderoth
 MARCH 13, 1944
 George J. Wenderoth

COUNTY SURVEYORS FILE DATA
 DO NOT REMOVE FROM OFFICE

m 30 - 30