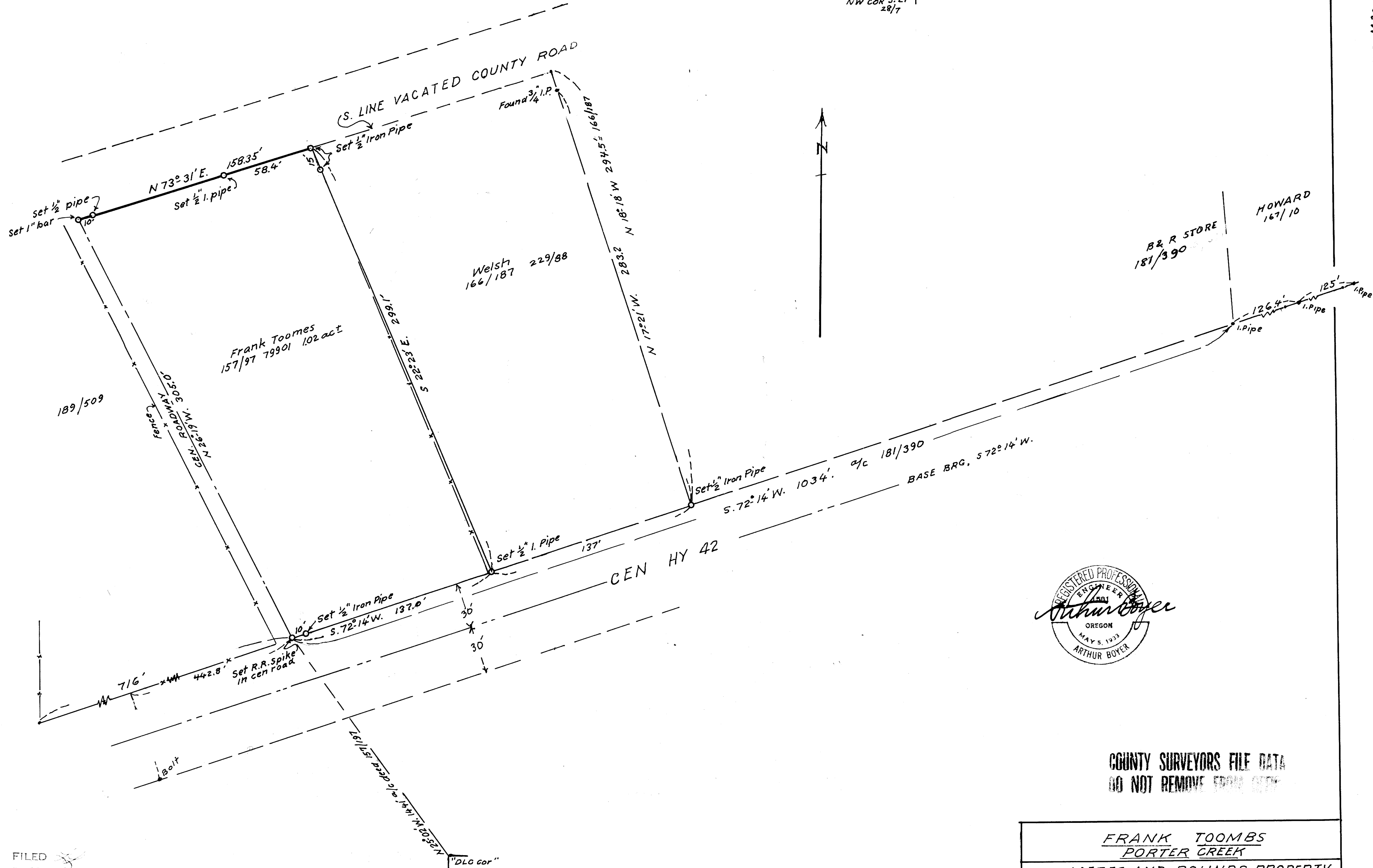


NW COR S. 27  
28/7



COUNTY SURVEYORS FILE DATA  
DO NOT REMOVE FROM SET

FRANK TOOMBS PORTER CREEK	
METES AND BOUNDS PROPERTY IN THOS. CROXTON DONATION LAND CLAIM IN SEC. 27, T28S; R. 7 W; WIL. MER DOUGLAS COUNTY, ORE	
AUG 1965	1" = 40 ft.

FILED  
RECEIVED  
AUG 12 1965  
COUNTY SURVEYOR  
DOUGLAS COUNTY, ORE.

MAP FILE M30 - 29