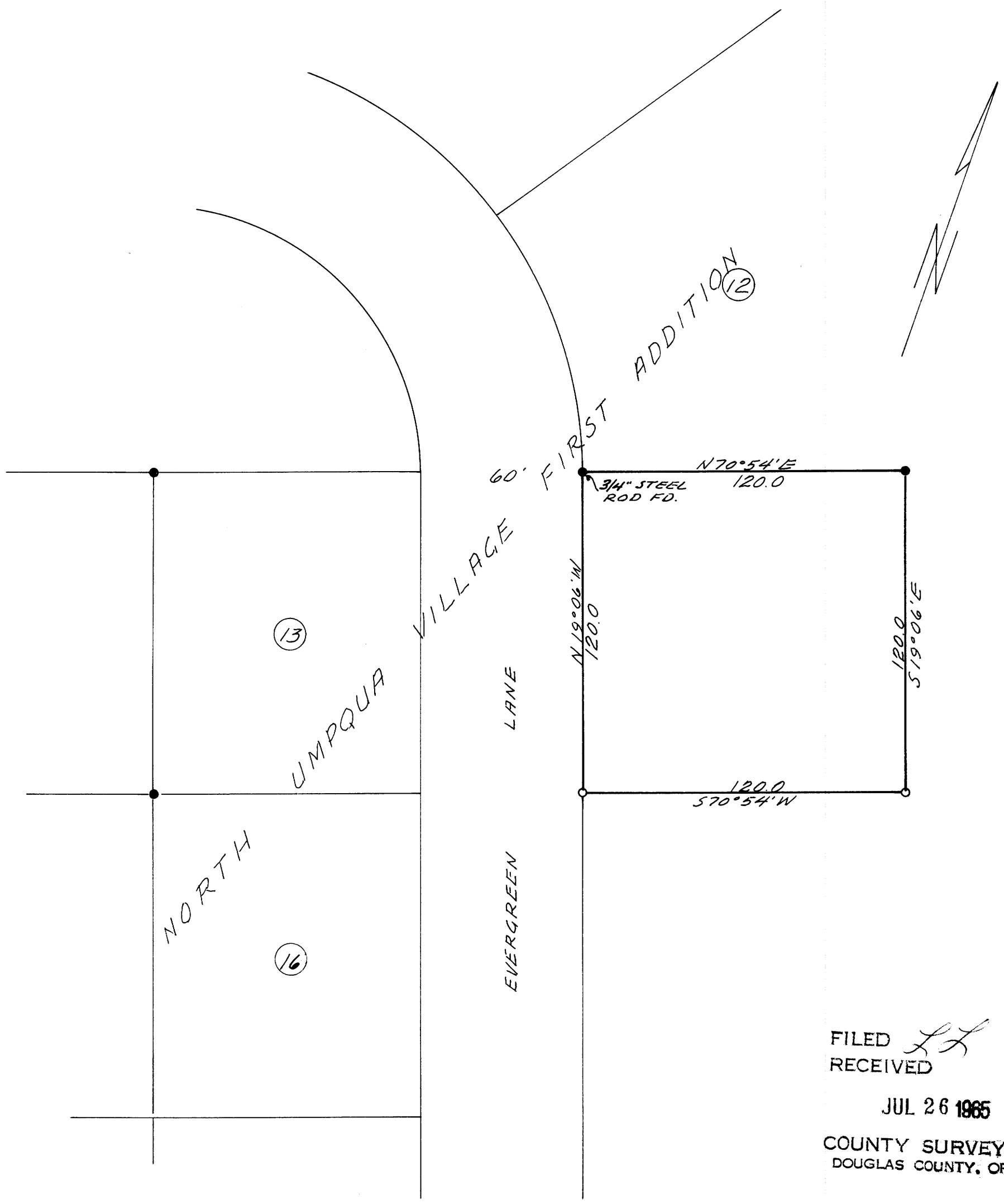


COUNTY SURVEYORS WILL NOT REMOVE FROM OFFICE

SURVEY FOR DEED DESCRIPTION IN SEC. 16, T26S, R2W, W.M.

SURVEYED FOR - MAX LOCKWOOD
ENGINEER - W.S. BARNES

JULY 1965
SCALE 1" = 40'



FILED *LL*
RECEIVED

JUL 26 1965

COUNTY SURVEYOR
DOUGLAS COUNTY, ORE.

● DENOTES MONUMENTS FOUND.
 ○ DENOTES 5/8" IRON RODS SET.
 BASE BEARING TAKEN FROM "NO. UMP. VILLAGE FIRST ADD." PLAT.

